



Nottinghamshire PCC Police and Crime Survey 2020-21 Quarter 1

June 2020



information by design

Introduction and Methodology

- ❑ This short presentation gives the ‘top-line’ results from the 1st quarter of the 2020-21 Nottinghamshire Police and Crime Survey (wave 12) conducted by Information by Design for Nottinghamshire PCC
- ❑ Fieldwork was conducted between 16th August and 24th October 2020.
- ❑ The survey was undertaken using an ‘assisted self-completion’ method, with a team of fieldwork staff working across selected LSOAs. One in eight LSOAs were selected from each of the following geographic areas:
 - Nottingham
 - South Notts - comprising Gedling, Broxtowe and Rushcliffe
 - BNS – comprising Bassetlaw, Newark and Sherwood
 - Mansfield and Ashfield
- ❑ The achieved sample in wave 12 was 1,080 respondents broken down as follows:

Area	Local Authority	2018-19 Unweighted Count	2019-20 Unweighted Count	2019-20 Q3 Unweighted Count	2019-20 Q4 Unweighted Count	2019-20 Q4 Unweighted Count	2020-21 Q1 Unweighted Count	Latest year Unweighted Count
Bassetlaw, Newark and Sherwood	Bassetlaw	533	542	127	133	165	144	569
	Newark and Sherwood	548	535	140	137	105	126	508
	Total	1,081	1,077	267	270	270	270	1,077
Mansfield and Ashfield	Ashfield	568	529	137	133	141	135	546
	Mansfield	563	547	130	136	129	135	530
	Total	1,131	1,076	267	269	270	270	1,076
Nottingham	Nottingham	1,066	1,075	265	270	270	270	1,075
South Nottinghamshire	Broxtowe	358	364	80	91	92	80	343
	Gedling	411	382	99	89	84	90	362
	Rushcliffe	336	331	88	90	94	100	372
	Total	1,105	1,077	267	270	270	270	1,077

* Data is shown in financial years. 2017-18 is the partial year comprising waves 1-3

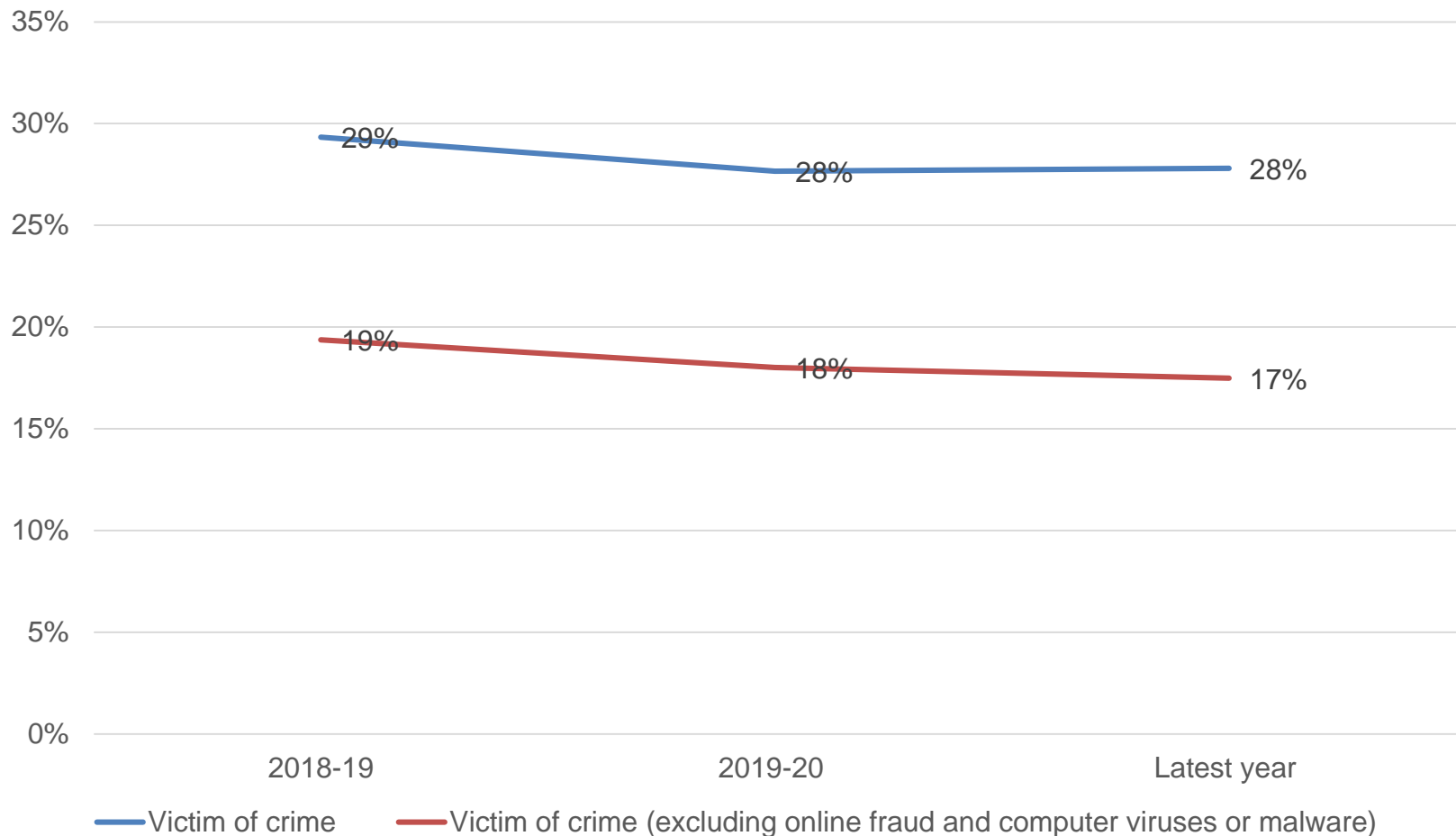
Fieldwork Periods

Wave	Start Date	End Date	Financial year
1	23 th August 2017	29 th September 2017	2017-18 *
2	12 th November 2017	2 nd January 2018	2017-18 *
3	10 th March 2018	31 st March 2018	2017-18 *
4	26 th May 2018	17 th June 2018	2018-19
5	25 th August 2018	30 th September 2018	2018-19
6	31 st October 2018	6 th January 2019	2018-19
7	2 nd February 2019	17 th February 2019	2018-19
8	14 th April 2019	2 nd June 2019	2019-20
9	18 th August 2019	21 st September 2019	2019-20
10	26 th November 2019	21 st December 2019	2019-20
11	22 nd February 2020	11 th March 2020	2019-20
12	16 th August 2020	24 th October 2020	2020-21

* 2017-18 is the partial year comprising waves 1-3

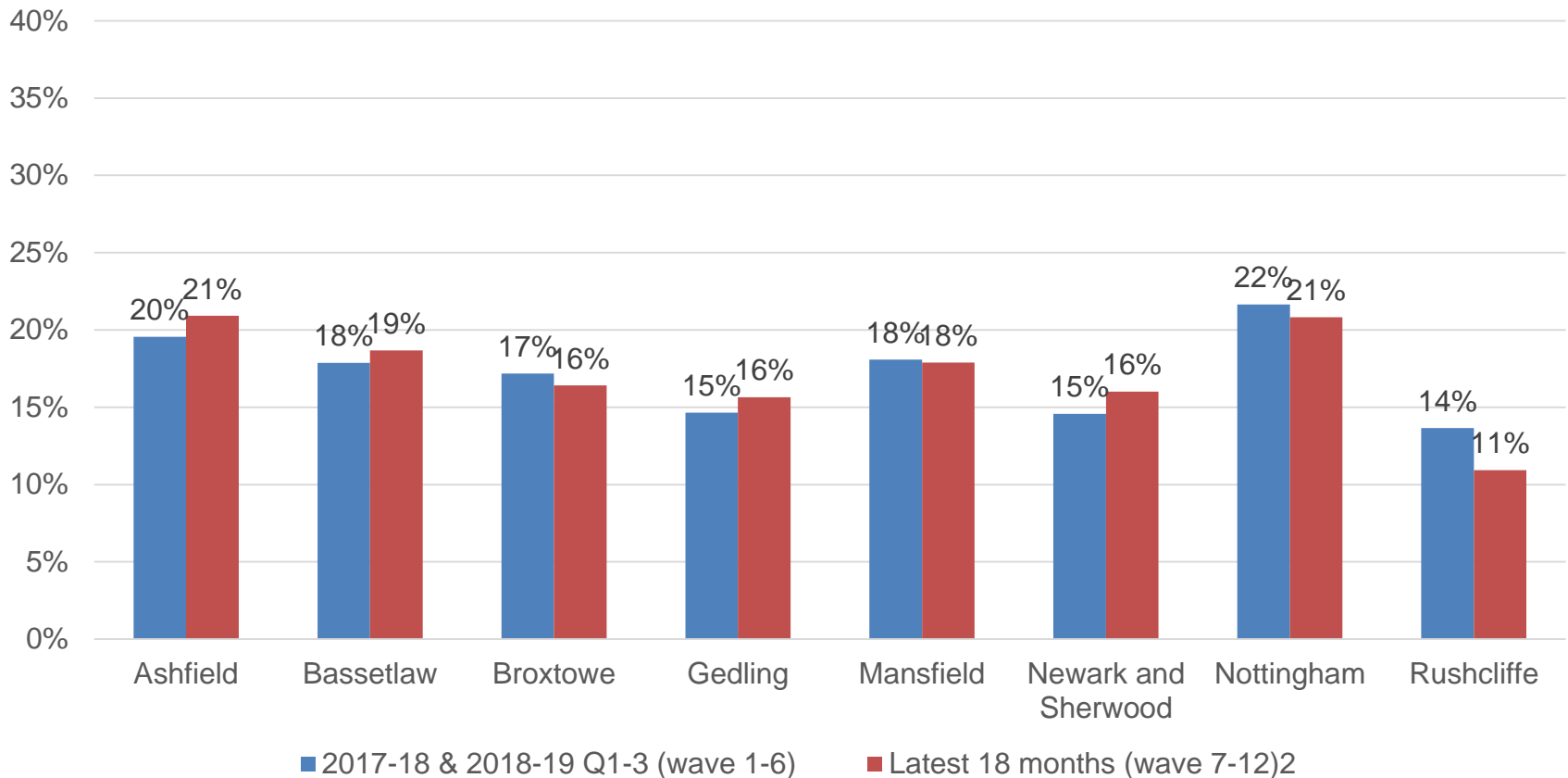
In the latest year, 28% of respondents had been victim of a crime in the last 12 months. This reduces to 17% when online fraud and computer misuse are excluded.

In the last 12 months, have you personally been a victim of crime?



When online fraud and computer misuse are excluded, in the latest year, respondents from Ashfield and Nottingham were most likely to have been a victim of crime, the change between first 18 months and the latest 18 months is greatest for Rushcliffe.

In the last 12 months, have you personally been a victim of crime? (excluding online fraud and computer viruses or malware)

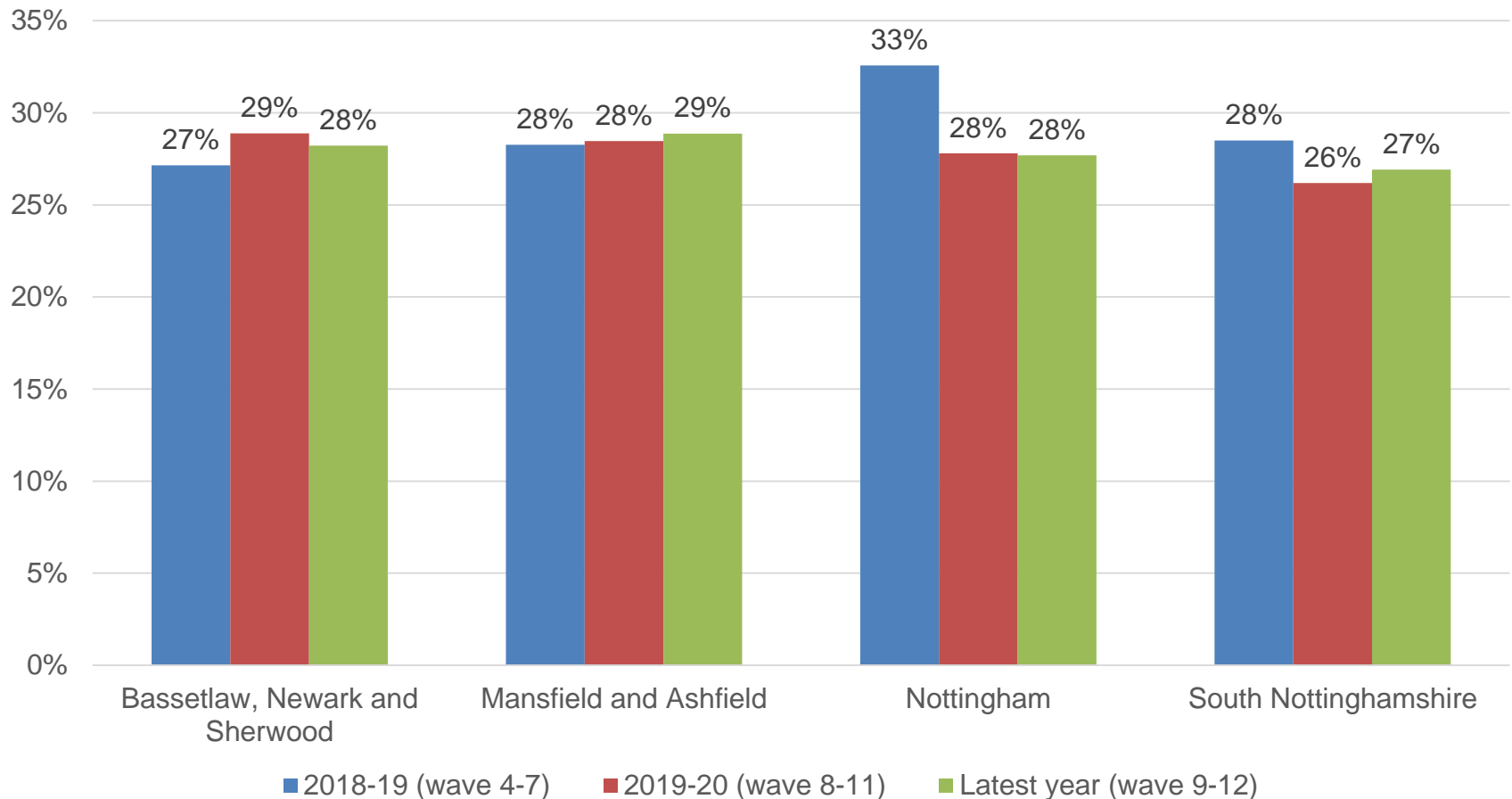


Base Last 18 months: Ashfield = 690, Bassetlaw = 652, Broxtowe = 643, Gedling = 650, Mansfield = 593, Newark & Sherwood = 666, Nottingham = 1,802, Rushcliffe = 646 Q: In the last 12 months, have you personally been a victim of any of the following crime types?



In the latest period, respondents from Mansfield and Ashfield were most likely to have been a victim of crime

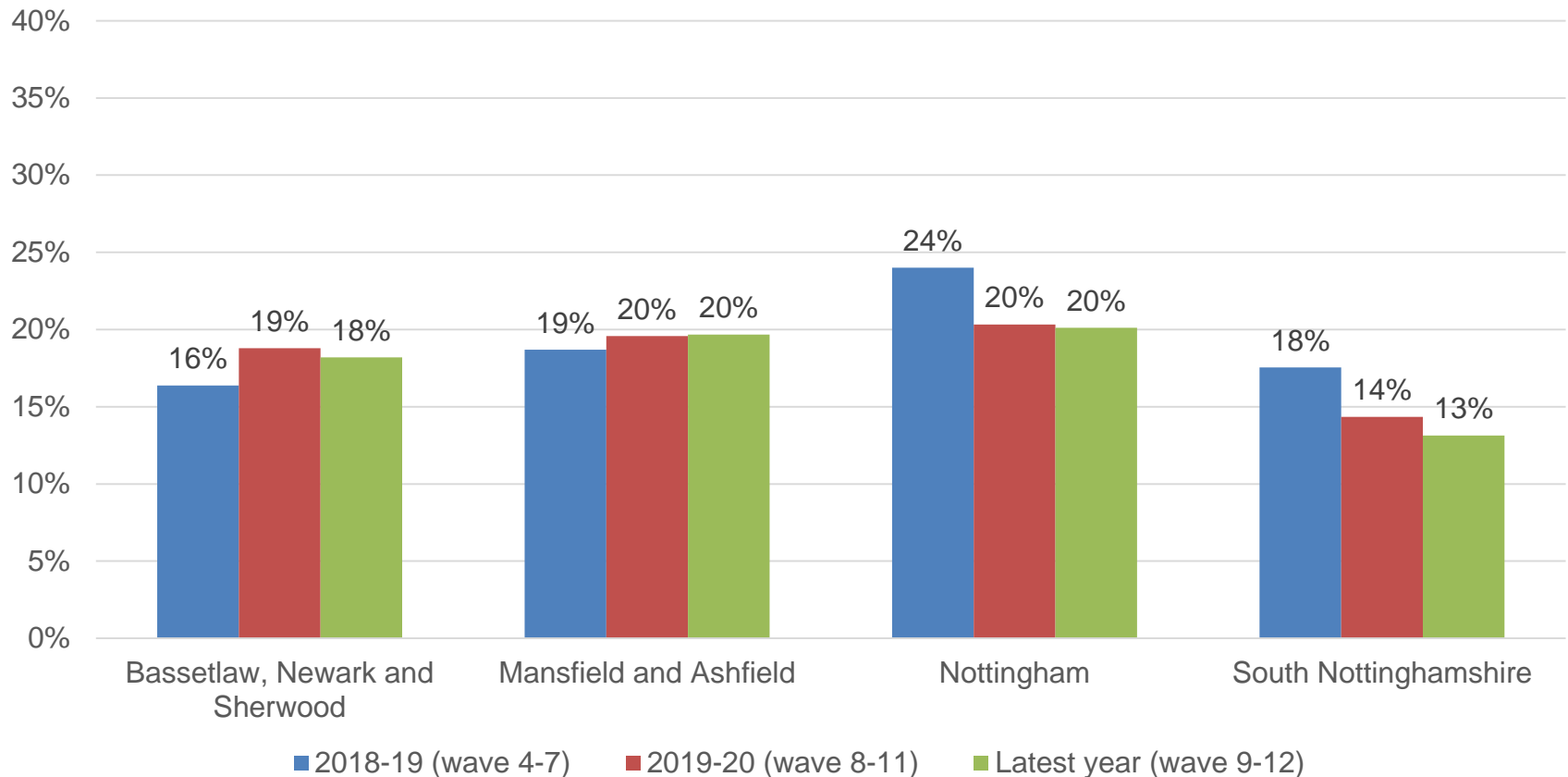
In the last 12 months, have you personally been a victim of crime?



Base Last 12 Months: Bassetlaw, Newark & Sherwood = 877, Mansfield and Ashfield = 848, Nottingham = 1,202, South Nottinghamshire = 1,296 Q In the last 12 months, have you personally been a victim of any of the following crime types?

When online fraud and computer misuse are excluded, in the latest year, respondents from Mansfield and Ashfield and Nottingham were most likely to have been a victim of crime

In the last 12 months, have you personally been a victim of crime? (excluding online fraud and computer viruses or malware)

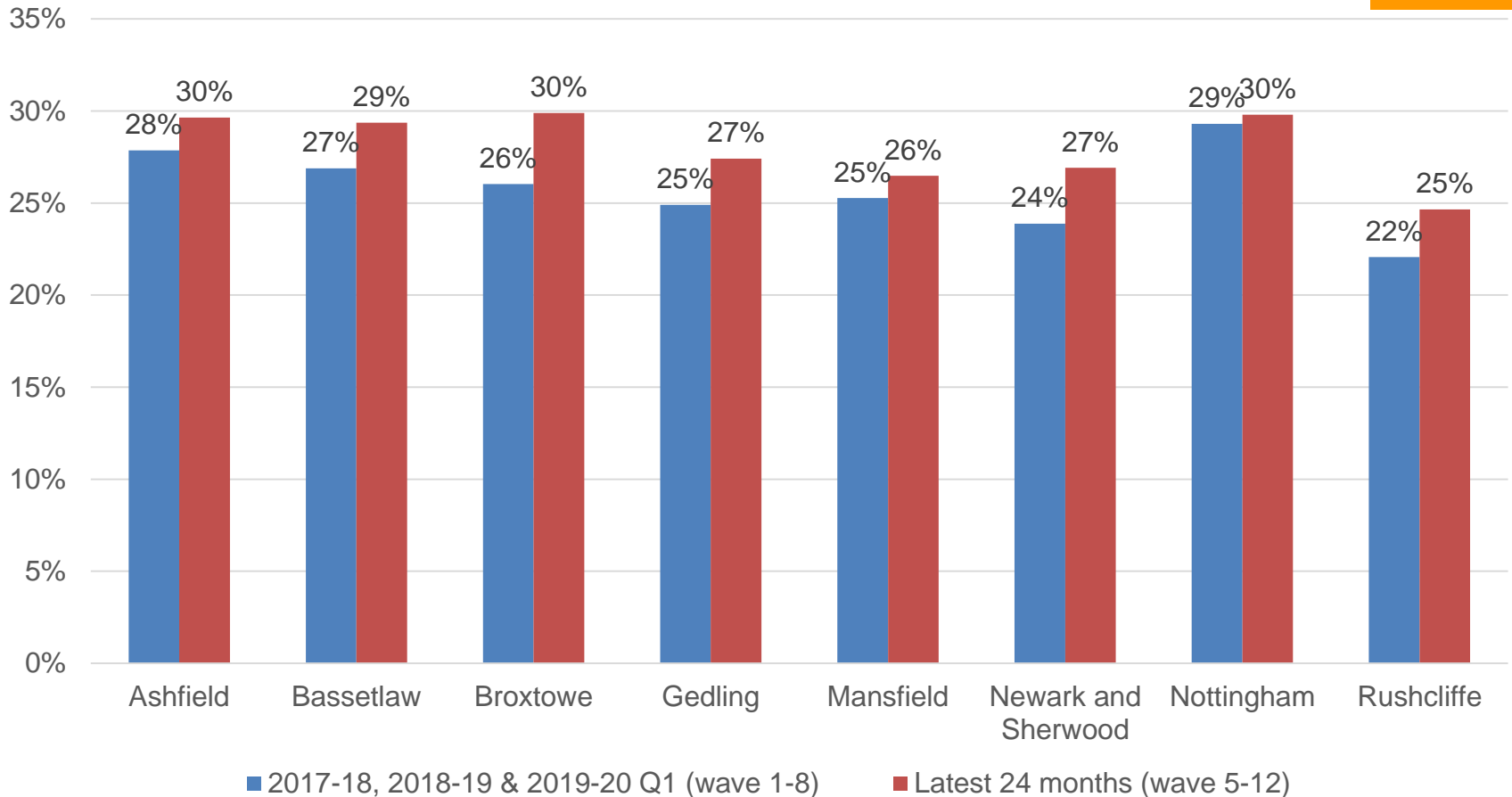


Base Last 12 Months: Bassetlaw, Newark & Sherwood = 877, Mansfield and Ashfield = 848, Nottingham = 1,202, South Nottinghamshire = 1,296 Q: In the last 12 months, have you personally been a victim of any of the following crime types?

Respondents from Ashfield, Broxtowe and Nottingham were most likely to have been a victim of crime; the increase between the first 24 months and the latest 24 months is highest for Broxtowe

In the last 12 months, have you personally been a victim of crime?

24 month periods



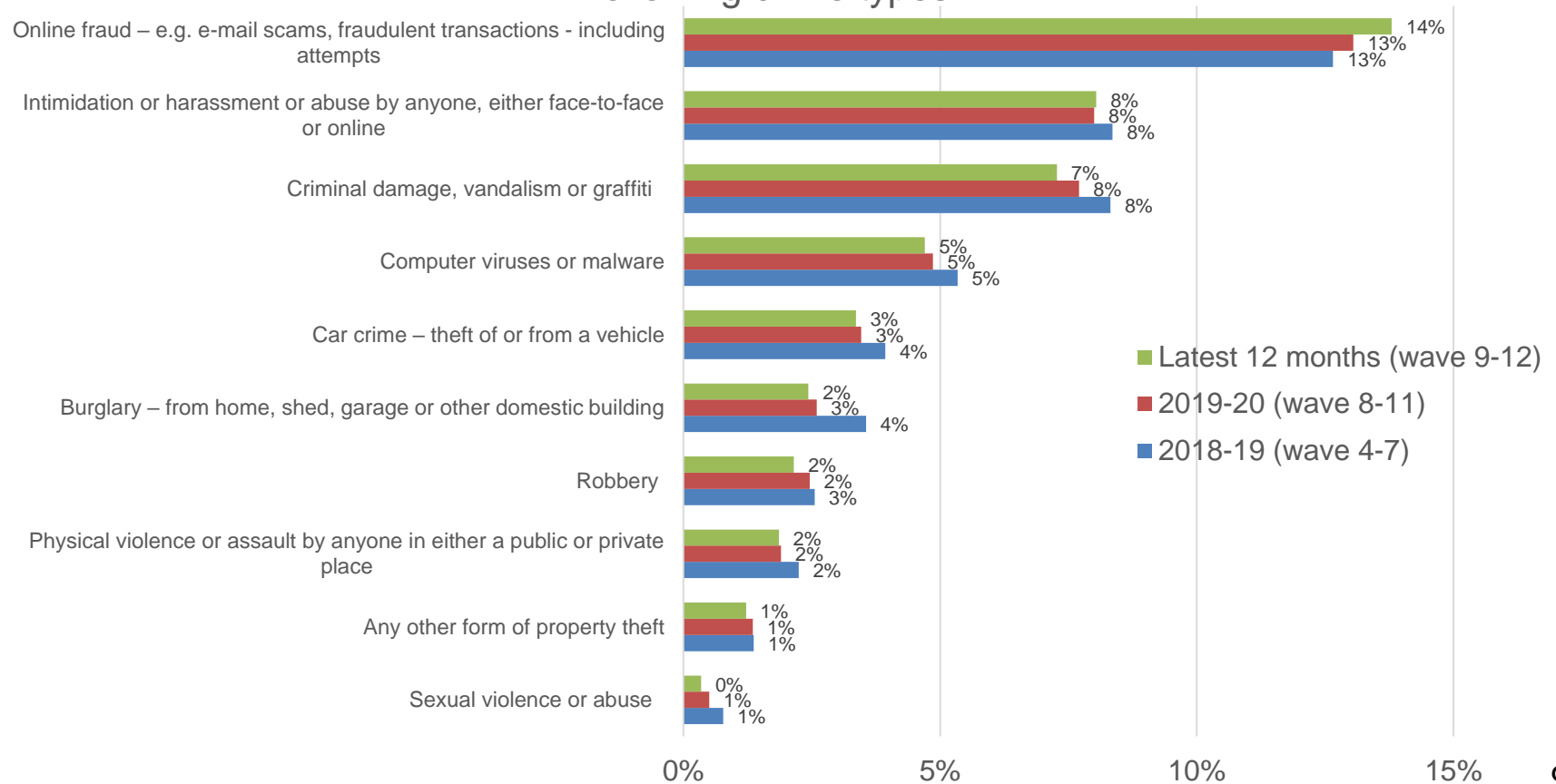
Base Last 24 months: Ashfield = 914, Bassetlaw = 869, Broxtowe = 843, Gedling = 867, Mansfield = 788, Newark & Sherwood = 891, Nottingham = 2,394, Rushcliffe = 852 Q: In the last 12 months, have you personally been a victim of any of the following crime types?



In the latest year, 28% of respondents had been victim of a crime; online fraud remains the most commonly experienced crime

- 2% of respondents had experienced hate related crime and 1% had experienced domestic violence/abuse related crime in the last 12 months

In the last 12 months, have you personally been a victim of any of the following crime types?

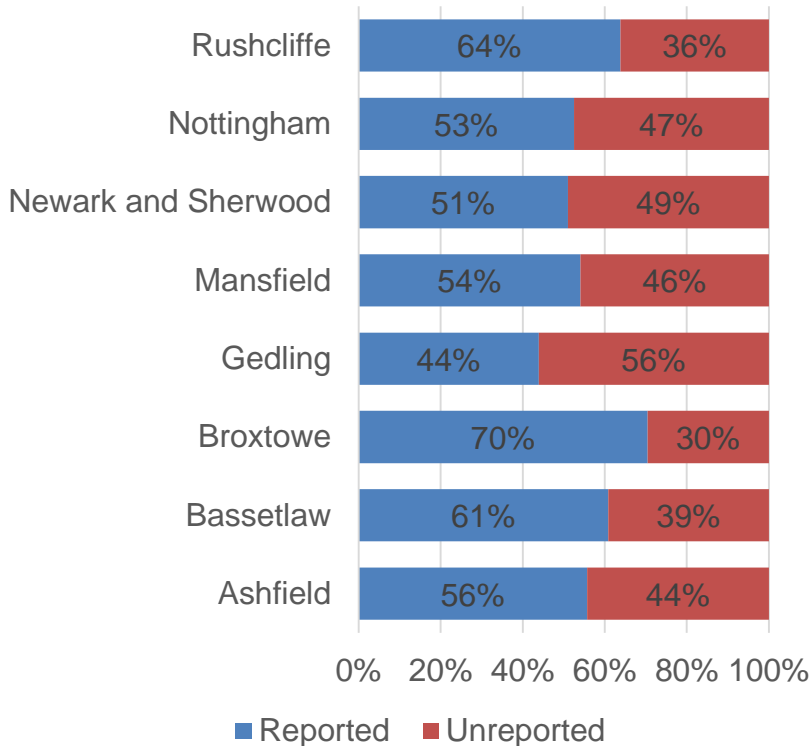


Base: 2017-18 = 3,152, 2018 - 19 = 4,251, 2019 - 20= 4,212, Last 12 months (wave 9-12) = 4,223

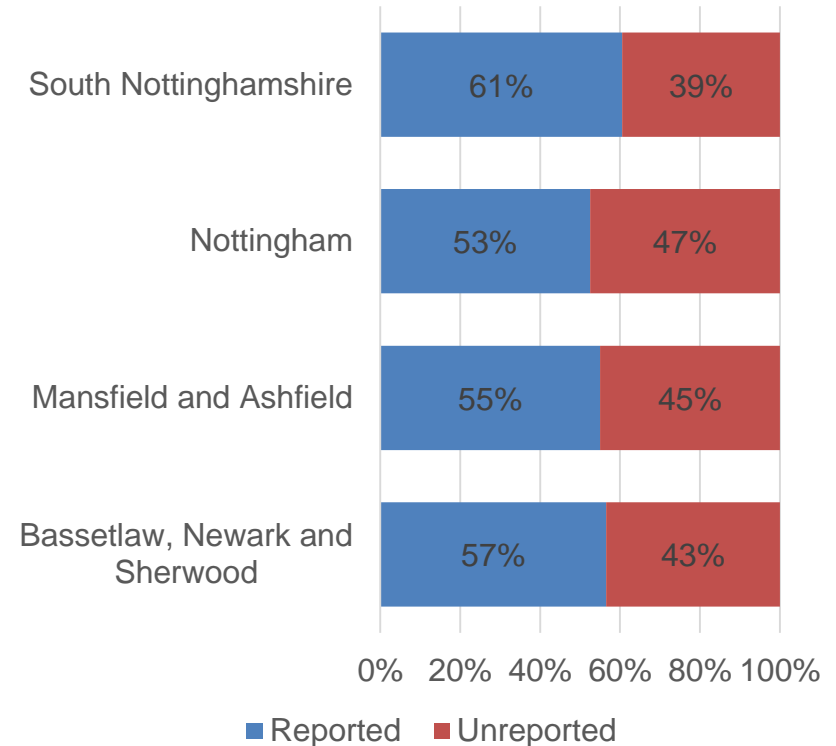
Q: In the last 12 months, have you personally been a victim of any of the following crime types?

In the latest 2 years, the proportion of crimes (excluding online and computer viruses or malware) that had been reported was 53% in Nottingham, 55% in Mansfield and Ashfield, 57% Bassetlaw, Newark and Sherwood and 61% in South Nottinghamshire.

Proportion of reported and unreported crimes (excluding online fraud and computer viruses or malware)
– Latest 2 years (wave 5-12)



Proportion of reported and unreported crimes (excluding online fraud and computer viruses or malware)
– Latest 2 years (wave 5-12)

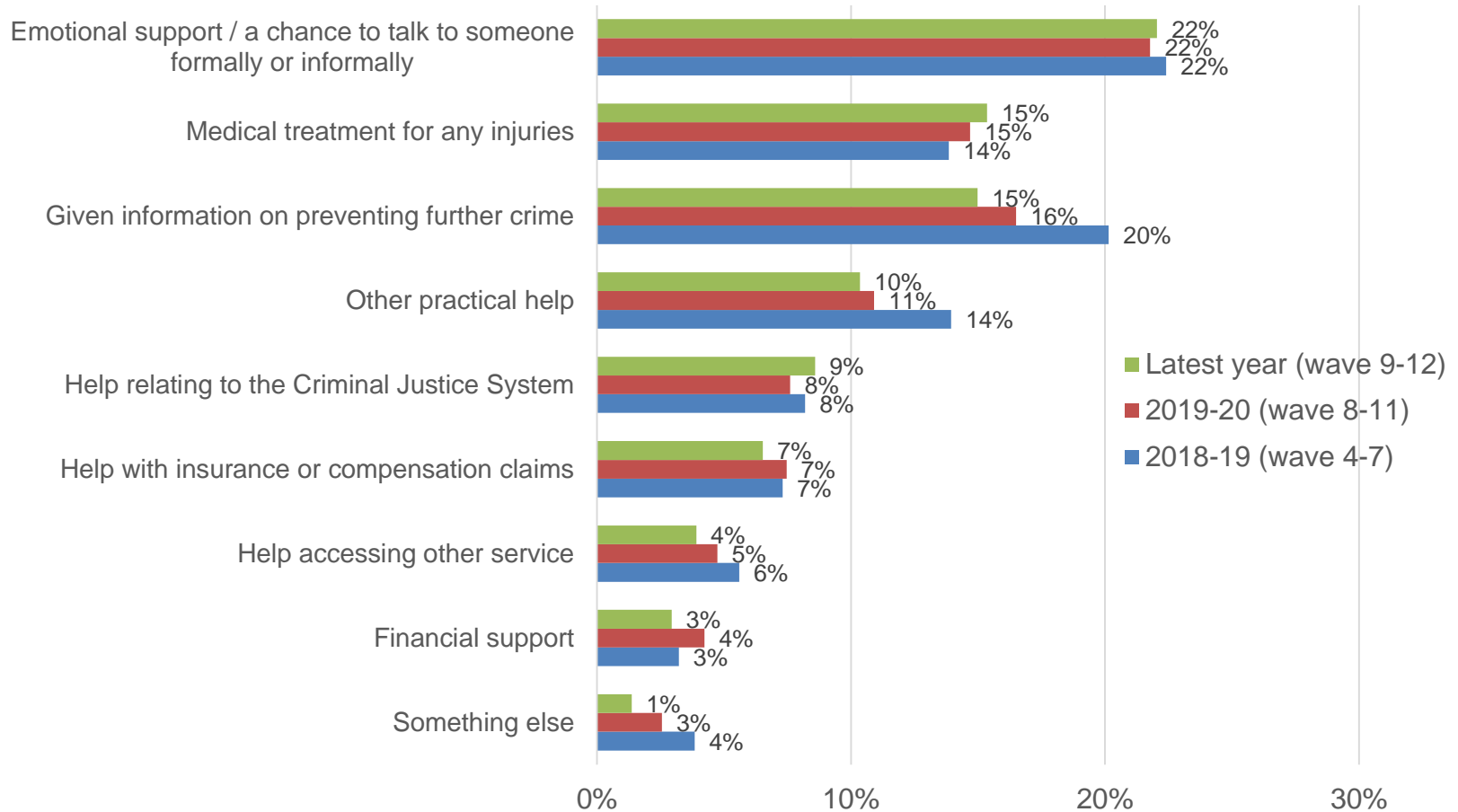


Base: Ashfield = 160, Bassetlaw = 148, Broxtowe = 143, Gedling = 114, Mansfield = 127, Newark & Sherwood = 126, Nottingham = 470, Rushcliffe = 92 Q: In the last 12 months, **how many times** have you personally been a victim of the following crime types? (Trimmed to 12) Assuming, if victim more than once, all reported/unreported same as last



In the latest year, 36% of respondents who had been a victim of crime had received some form of information, advice or support

Did you receive any of the following types of information, advice or support when you were the victim of this crime?

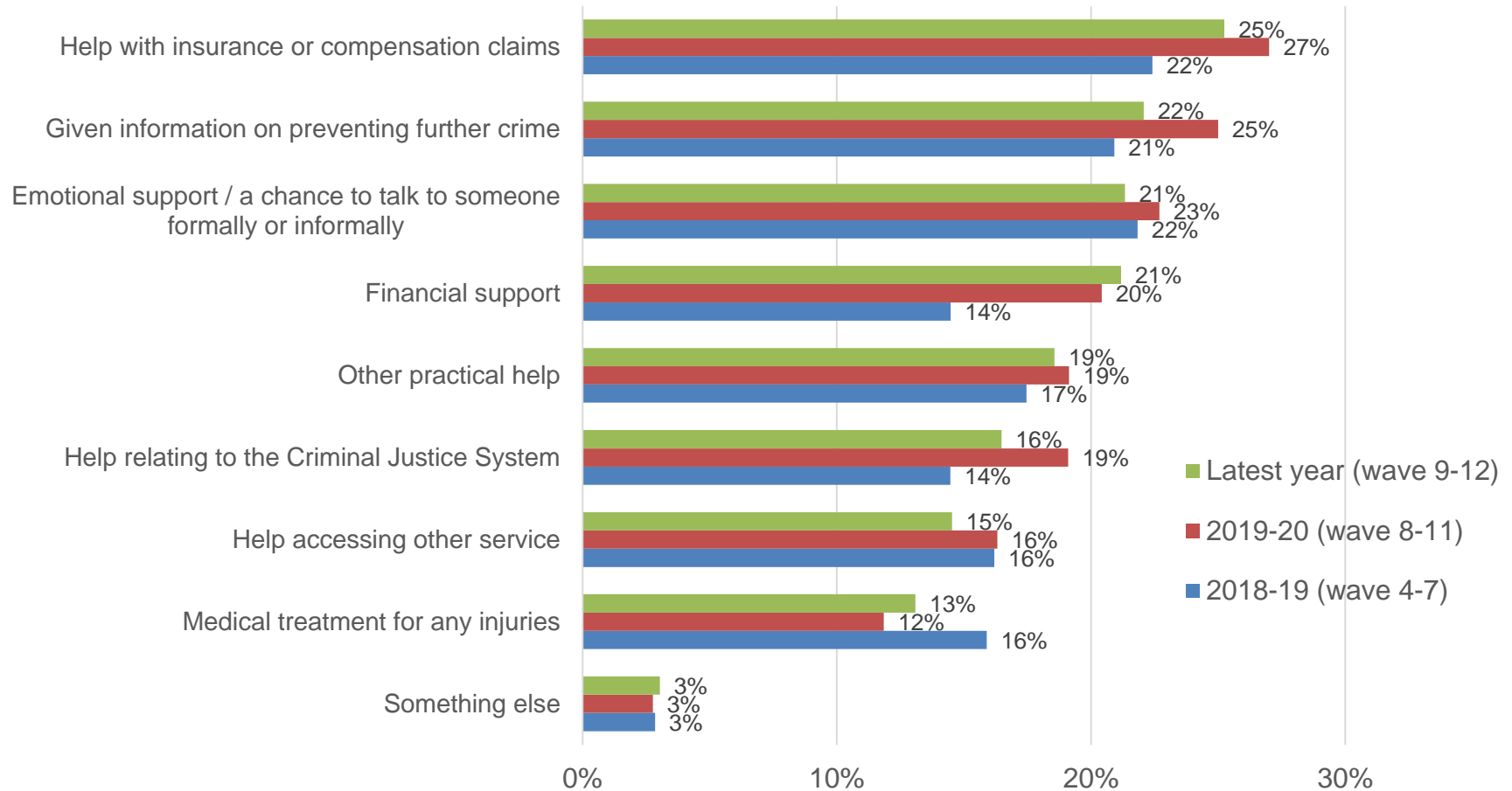


Base: 2017-18 = 94 - 511, 2018-19 = 159 - 740, 2019-20 = 149 - 561, Last 12 months (wave 9-12) = 134 - 501 Q: Did you receive any of the following types of information, advice or support when you were the victim of this crime, and if not, please tell us if you would have liked to receive any of the following support?



In the latest year, 42% of respondents who had been a victim of crime would have liked to have received some form of information, advice or support

Would you have liked to receive any of the following types of information, advice or support when you were the victim of this crime?

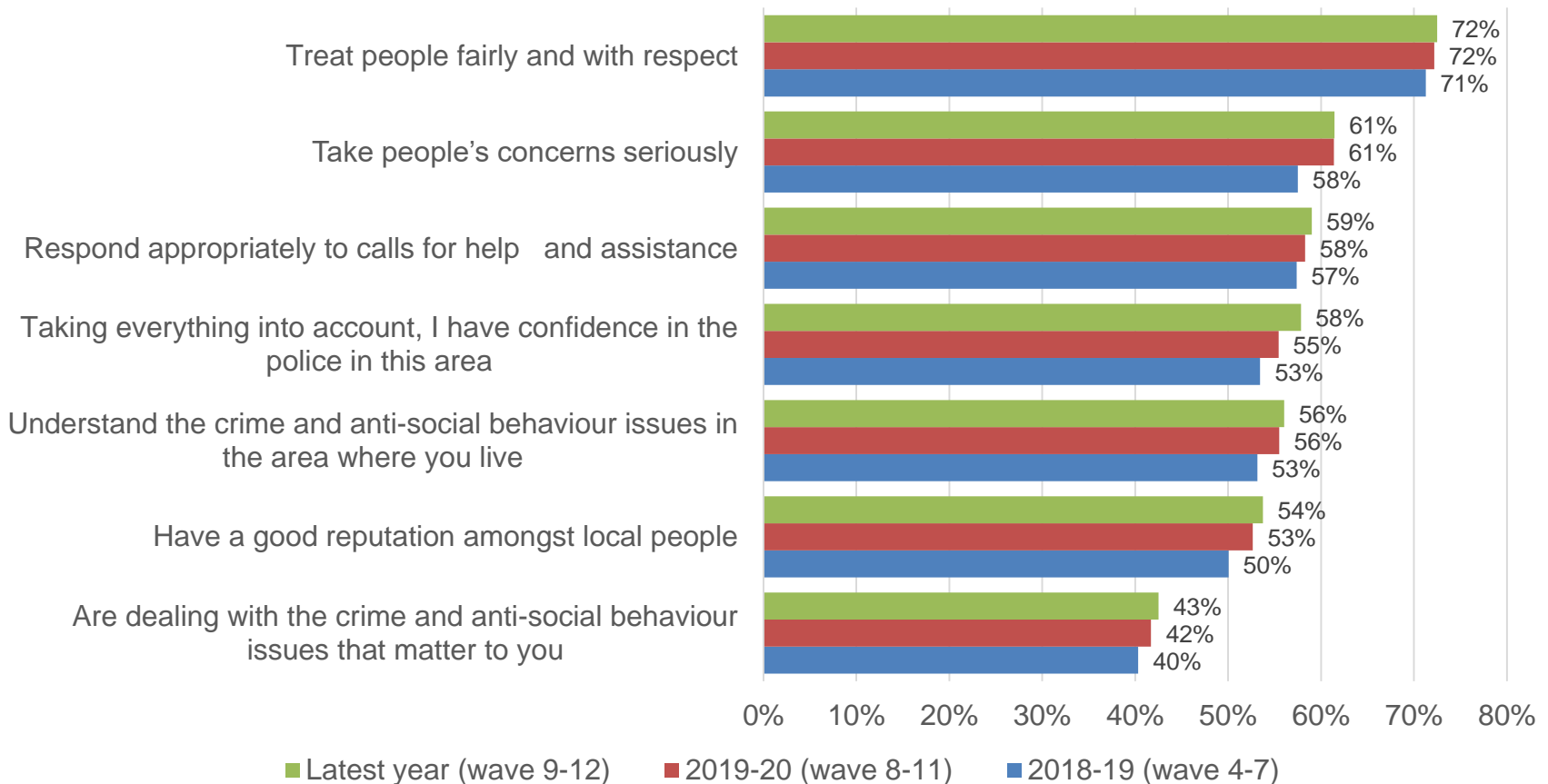


Base: 2017-18 = 94 - 511, 2018-19 = 159 - 740, 2019-20 = 149 - 561, Last 12 months (wave 9-12) = 134 - 501 Q: Did you receive any of the following types of information, advice or support when you were the victim of this crime, and if not, please tell us if you would have liked to receive any of the following support?



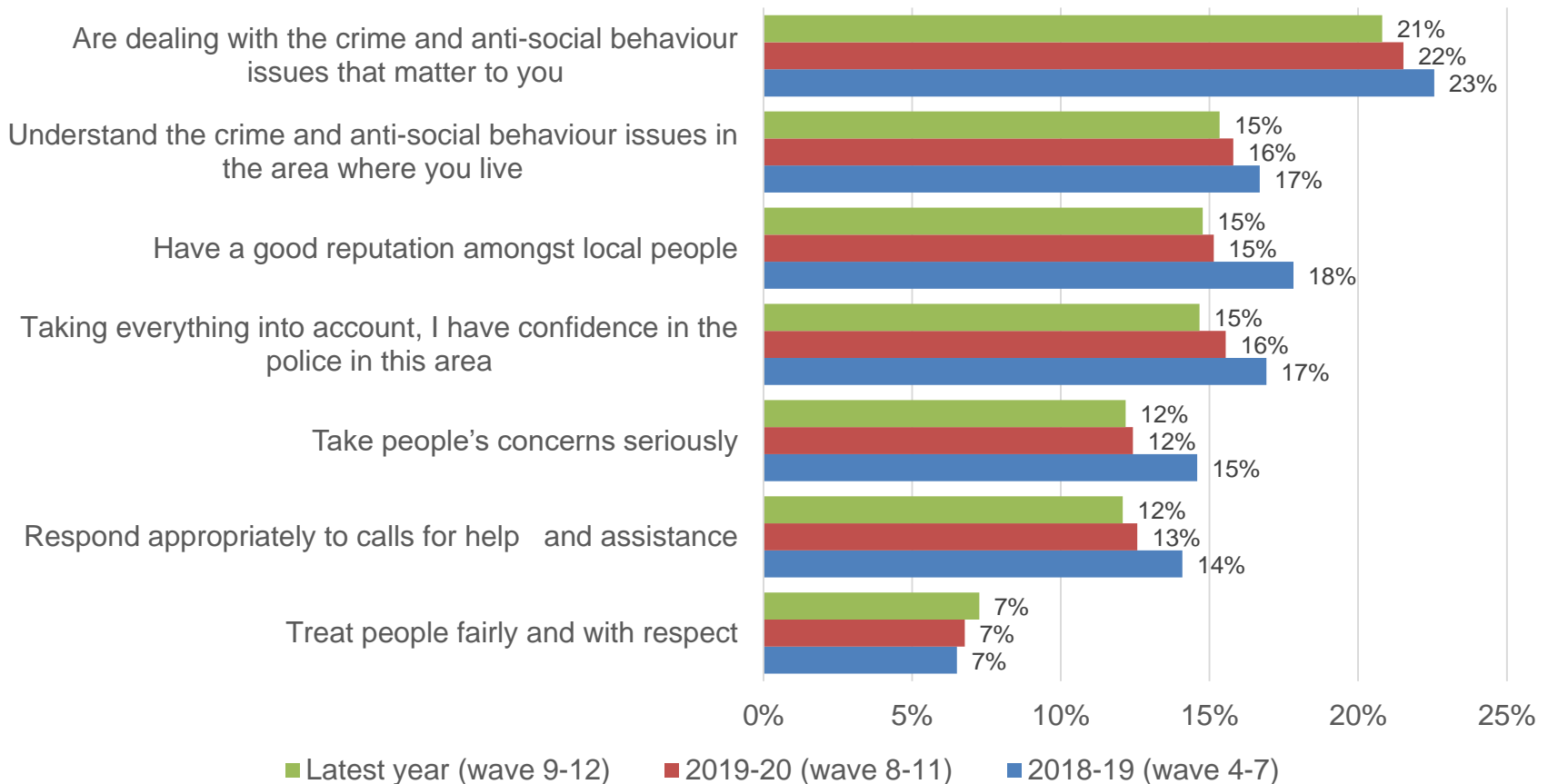
Excluding those who answered 'don't know', in the latest year 72% agreed that the police in their local area treat people fairly and with respect; small increases over recent periods for all statements.

Please say how much you agree or disagree with each of the following statements about the police in your local area: - **Strongly Agree & Agree** – Excluding 'Don't know'



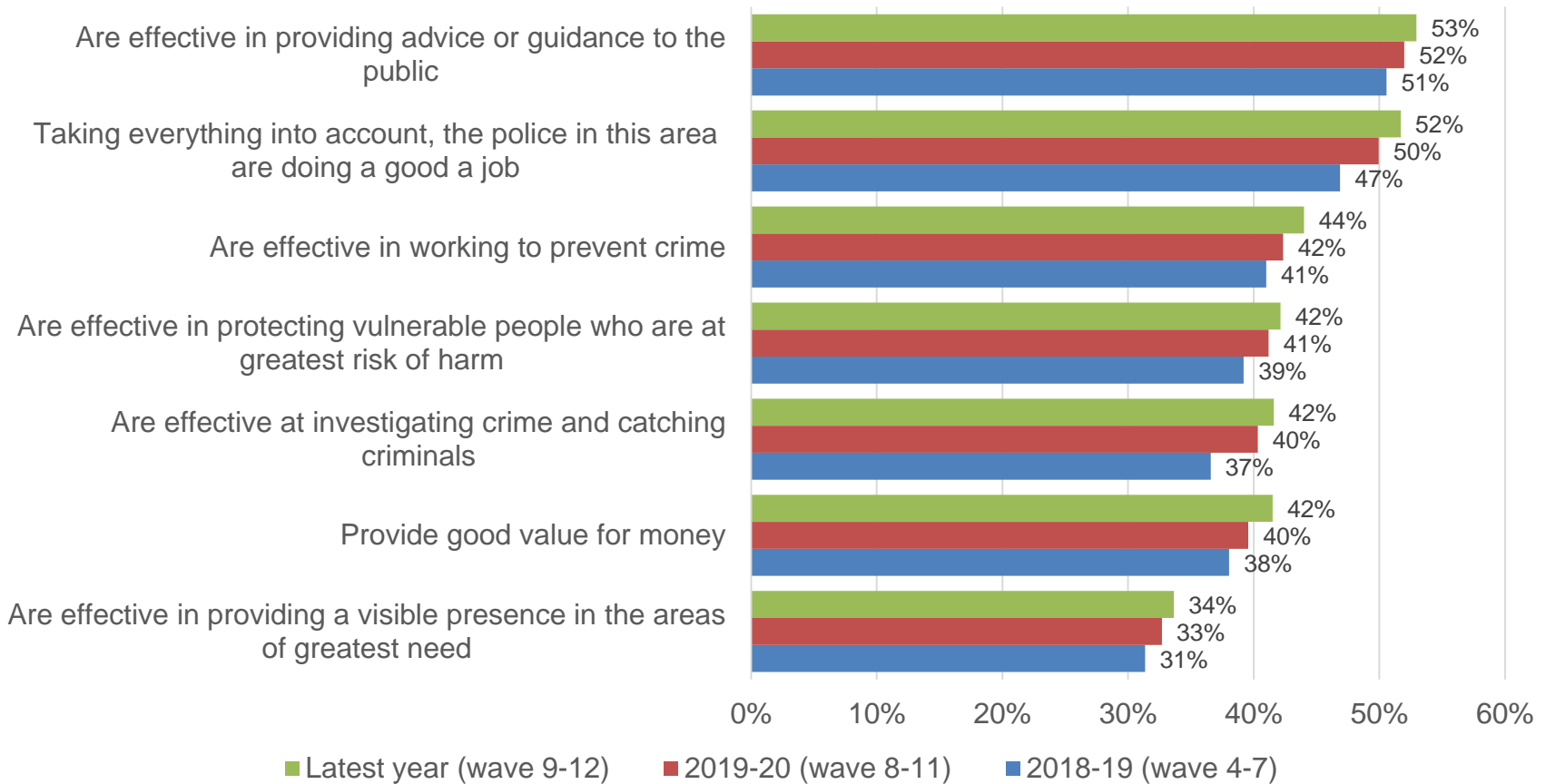
Excluding those who answered 'don't know', in the latest year 21% of respondents disagreed that the police in their local area are dealing with the crime and anti-social behavior issues that matter to them

Please say how much you agree or disagree with each of the following statements about the police in your local area: - **Strongly Disagree & Disagree** – Excluding 'Don't know'



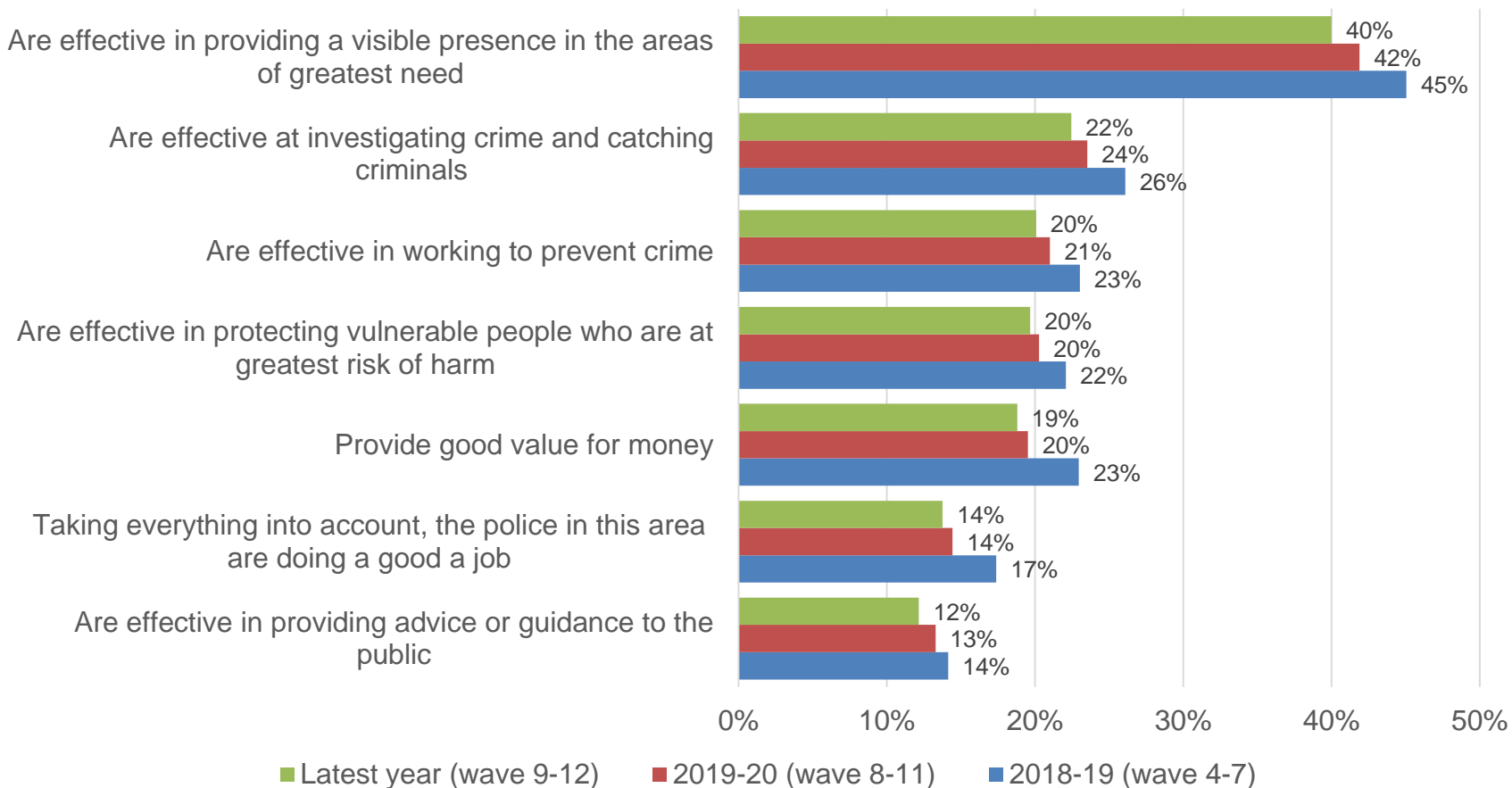
Excluding those who answered 'don't know', in the latest year 53% agreed that the police in their local area are effective in providing advice or guidance to the public; small increases over recent periods for all statements.

Please say how much you agree or disagree with each of the following statements about the police in your local area: - **Strongly Agree & Agree** – Excluding 'Don't know'



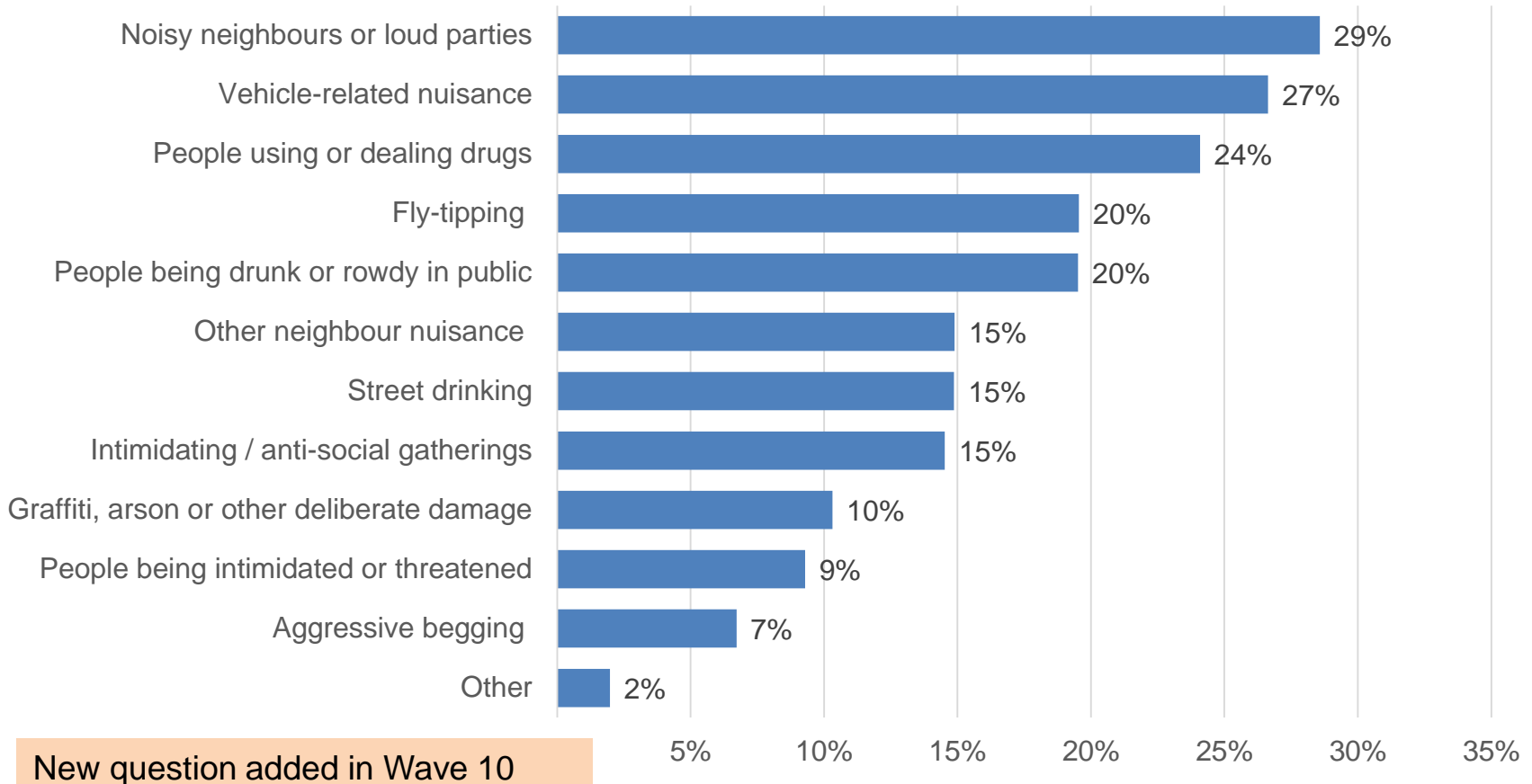
Excluding those who answered 'don't know', in the latest year 40% of respondents disagreed that the police in their local area are effective in providing a visible presence in the area of greatest need

Please say how much you agree or disagree with each of the following statements about the police in your local area: - **Strongly Disagree & Disagree** – Excluding 'Don't know'



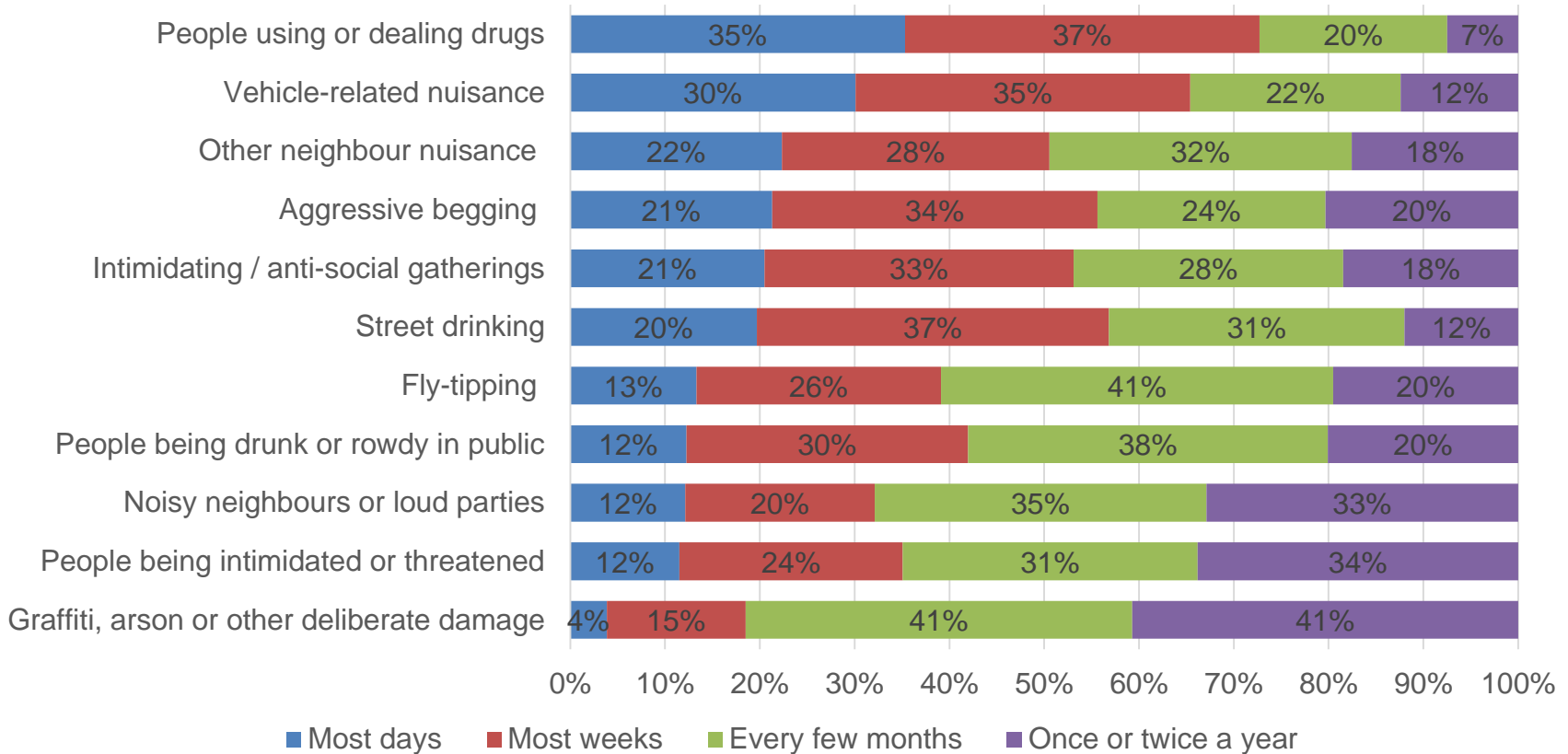
Noisy neighbours or loud parties, vehicle-related nuisance and people using or dealing drugs are the top 3 types of ASB personally experienced by respondents over the last 12 months

Which of the following types of anti-social behaviour (ASB), if any, have you personally experienced **in your local neighbourhood** over the last 12 months?



73% of respondents who had personally experienced people using or dealing drugs in their local neighbourhood experienced this most weeks or more often

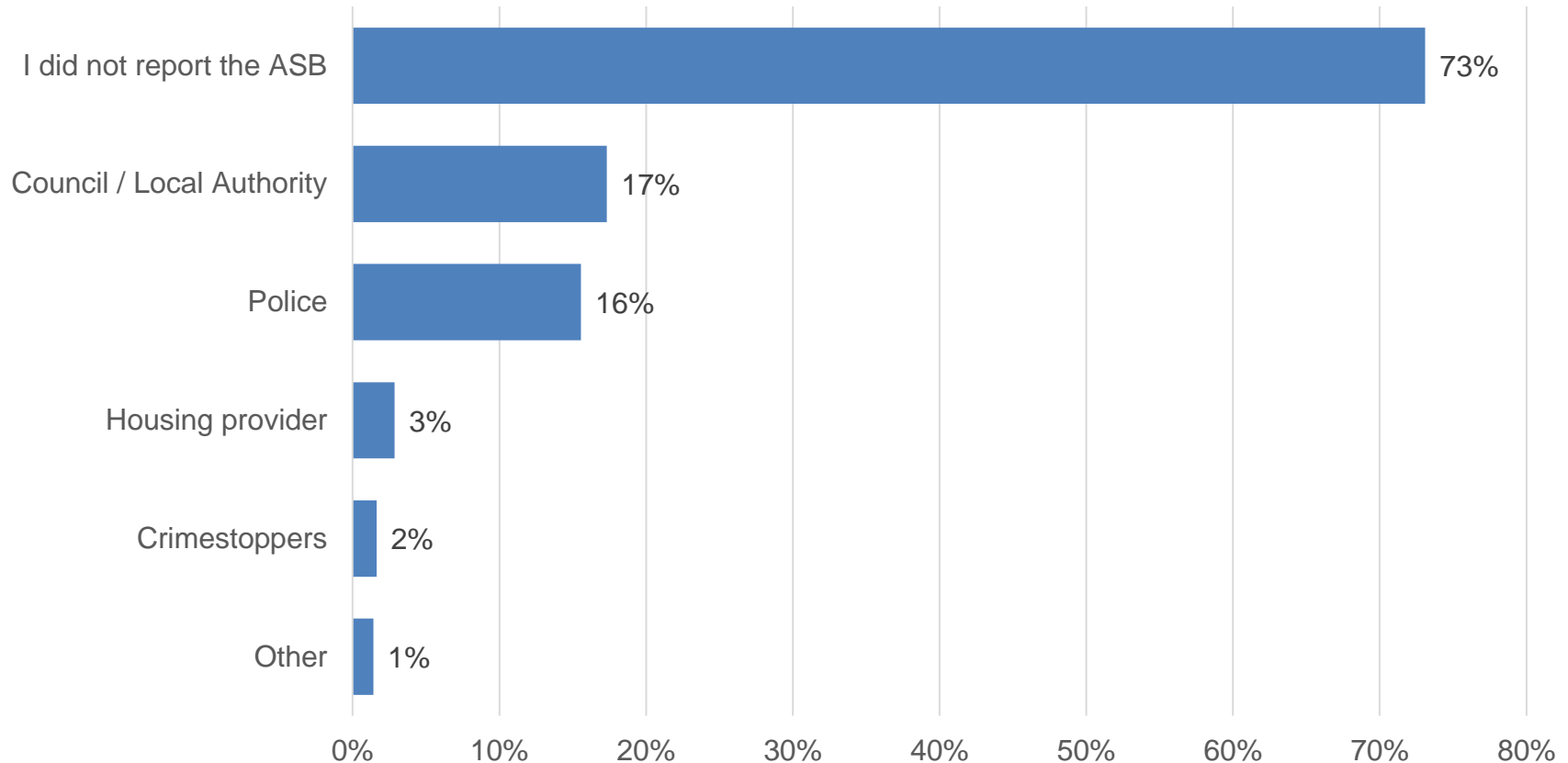
If you have experienced one or more types of ASB, please indicate how often this has happened



New question added in Wave 10

73% of respondents who had personally experienced ASB in their local neighbourhood over the last year did not report it

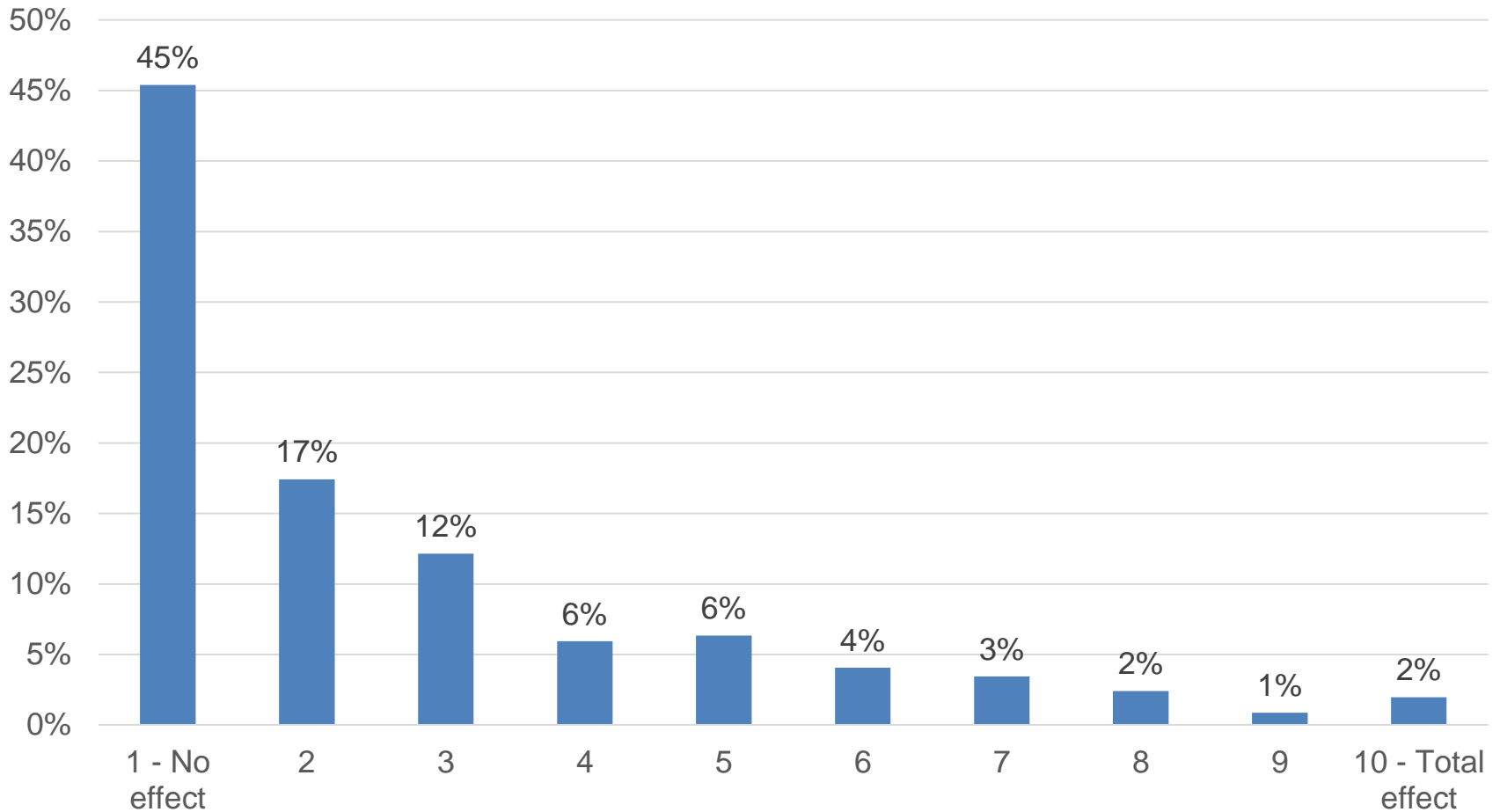
If you have experienced one or more forms of ASB over the last year, which of the following agencies, if any, did you report the issue(s) to?



New question added in Wave 10

ASB has 'no effect' on the quality of life of 45% of respondents. The mean score is 2.7.

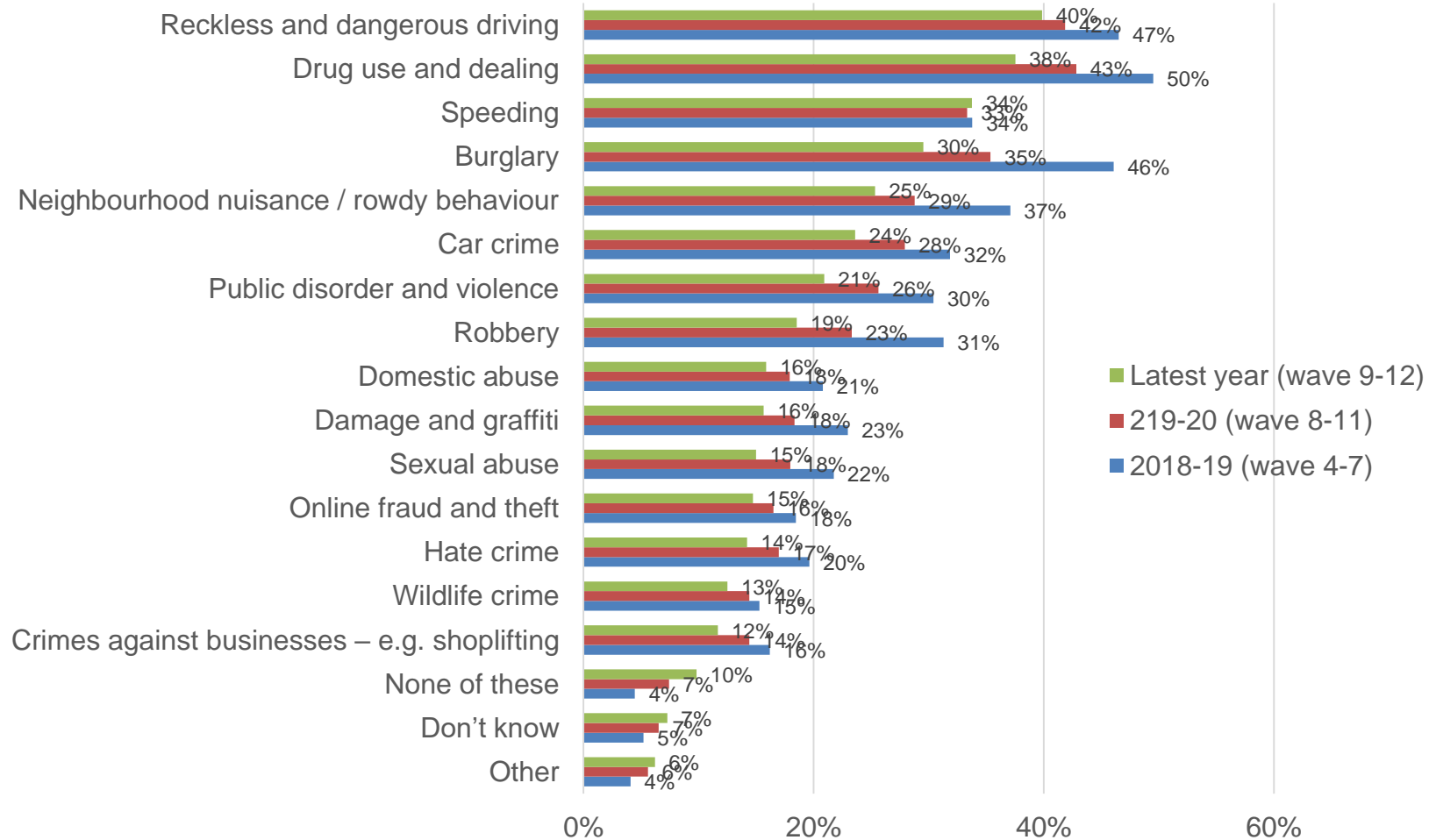
How much is your own quality of life affected by ASB?



New question added in Wave 10

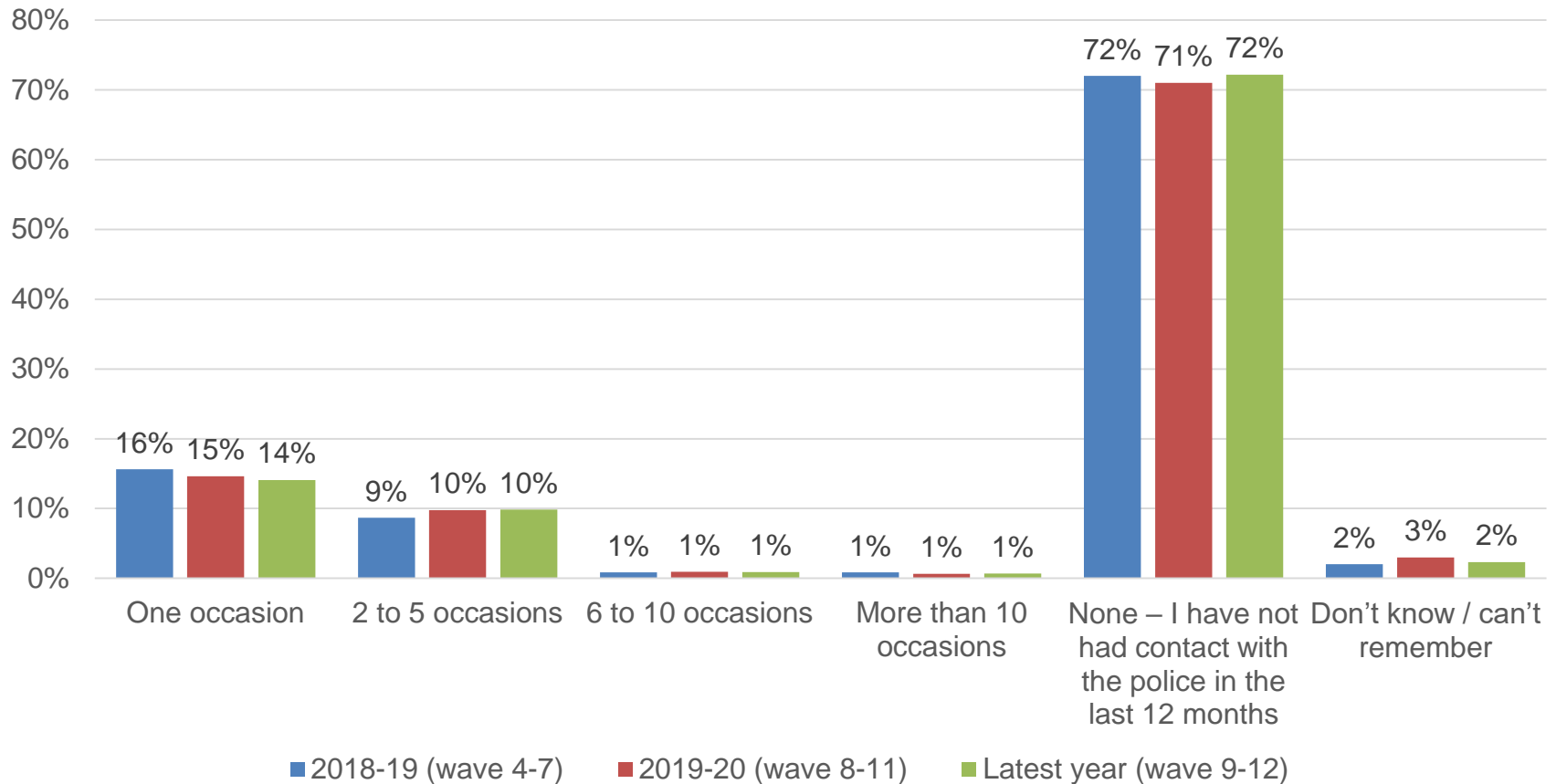
Reckless and dangerous driving, drug use and dealing and speeding are the top crime and ASB issues respondents would like to see tackled (latest year data)

Are there any specific crime or anti-social behaviour issues that you would like to see the police and other agencies do more to tackle in your area?



26% of respondents had contacted Nottinghamshire Police in the last 12 months in the latest year.

On how many occasions in the past 12 months have you had contact with Nottinghamshire Police?

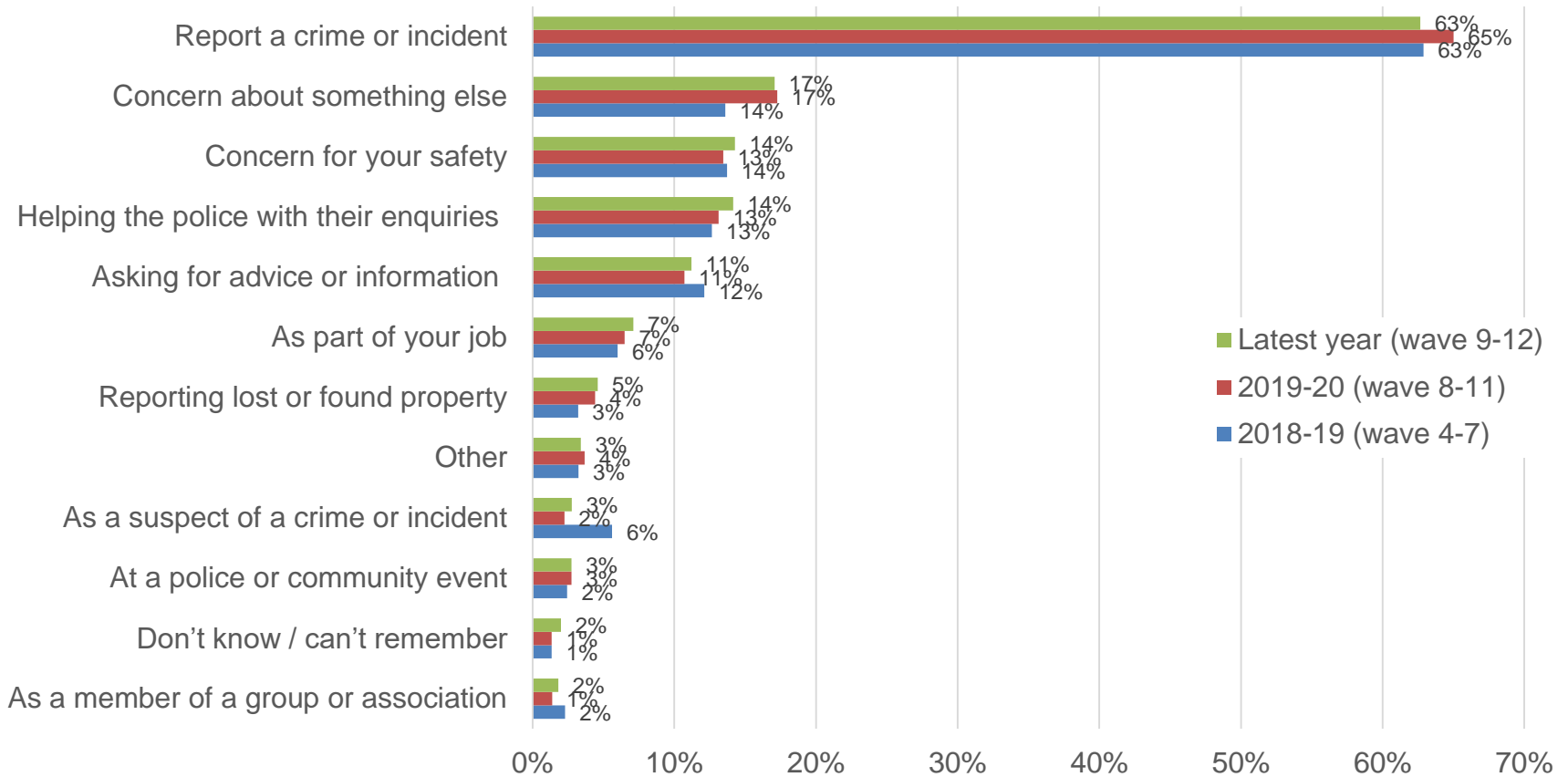


Question added in Wave 6

Base: 2019-18 = 1,988, 2019-20 = 3,990, Last 12 months (wave 9-12) = 4,015 Q: On how many occasions in the past 12 months have you had contact with Nottinghamshire Police?

Of the 26% of respondents that had contacted the police in the last 12 months, 63% had done so to report a crime or incident in the latest year.

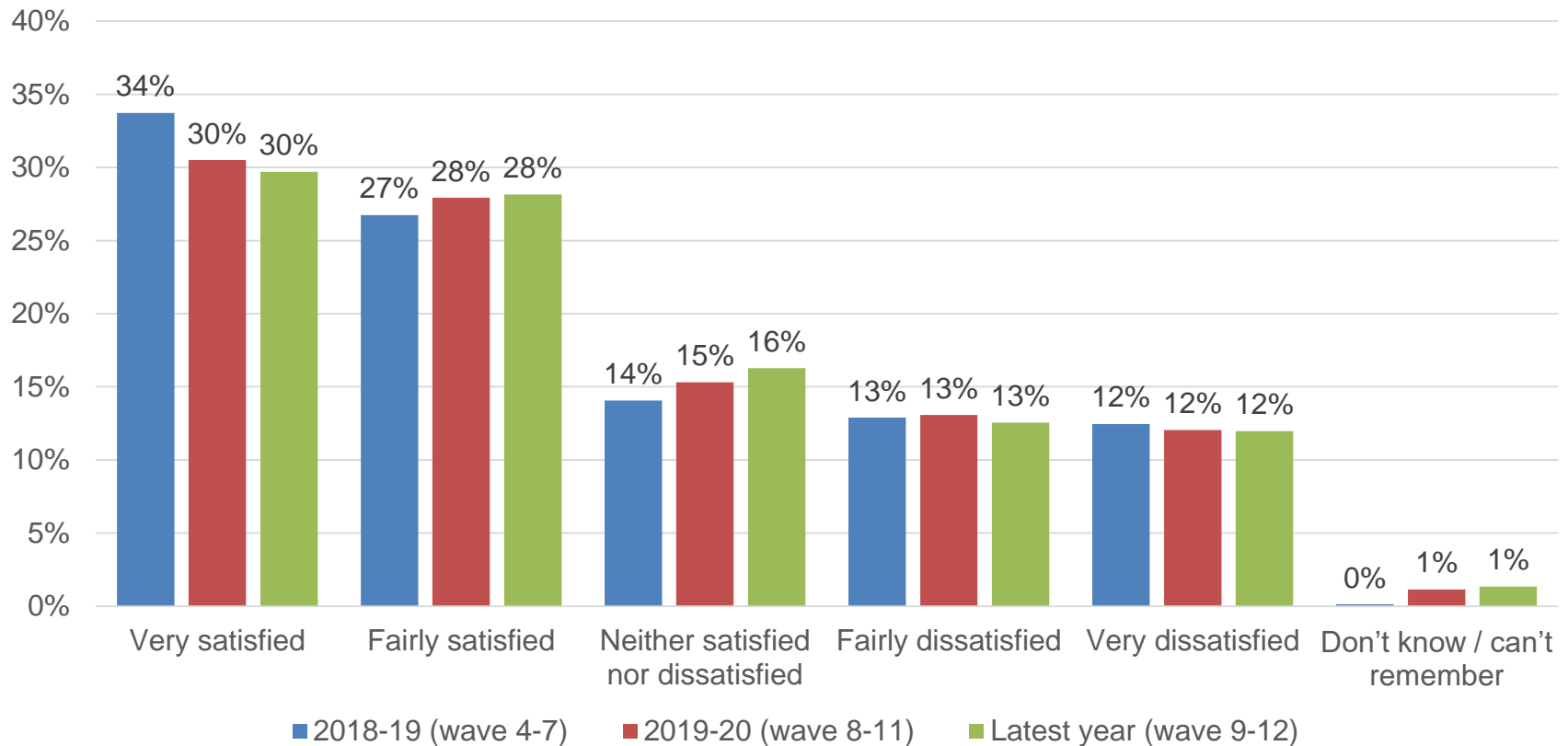
Thinking back to the occasions that you have had contact with the police over the last 12 months, what were the reasons?



Question added in wave 6

58% were satisfied with the service they received from Nottinghamshire Police in the latest year; 25% were dissatisfied

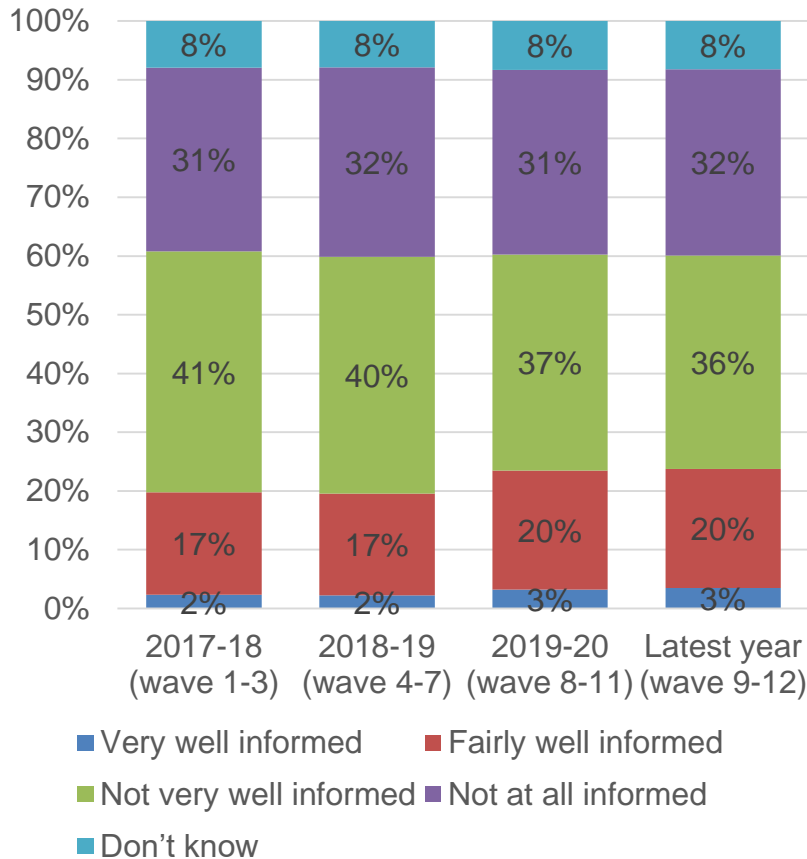
Thinking back to the last occasion that you had contact with Nottinghamshire Police, overall how satisfied or dissatisfied were you with the service you received?



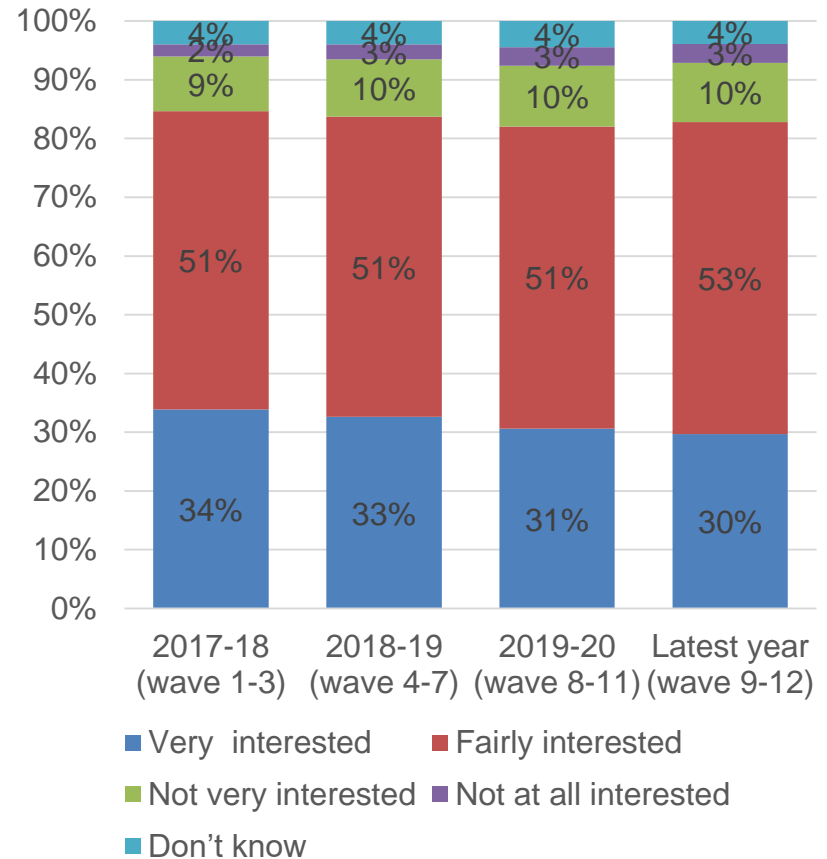
Question added in wave 6

In the latest year, 24% of respondents feel well informed about what the police in their local area doing and 83% are interested in what the police are doing in their local area

How well informed do you feel about what the police in your local area are doing?



How interested, if at all, are you in knowing what the police are doing in your local area?

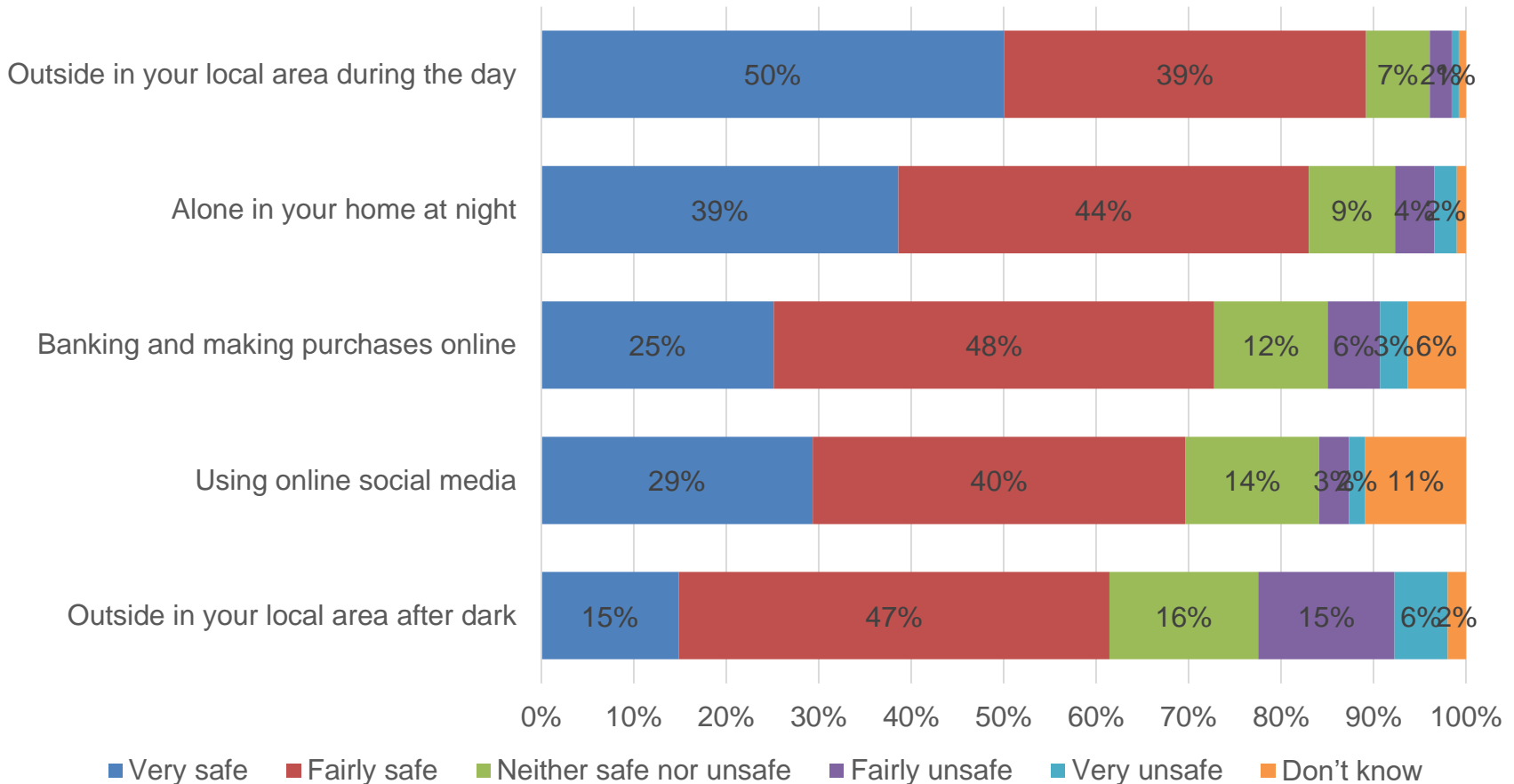


Base: 2017-18 = 3,172, 2018-19 - 4,127, 2019-20 = 4,102 Last 12 months = 4,115 Q: How well informed do you feel about what the police in your local area are doing?/ Base: 2017-18 = 3,169, 2018-19 - 4,157, 2019-20 = 4,060, Last 12 months 4,076 Q: How interested, if at all, are you in knowing what the police are doing in your local area?



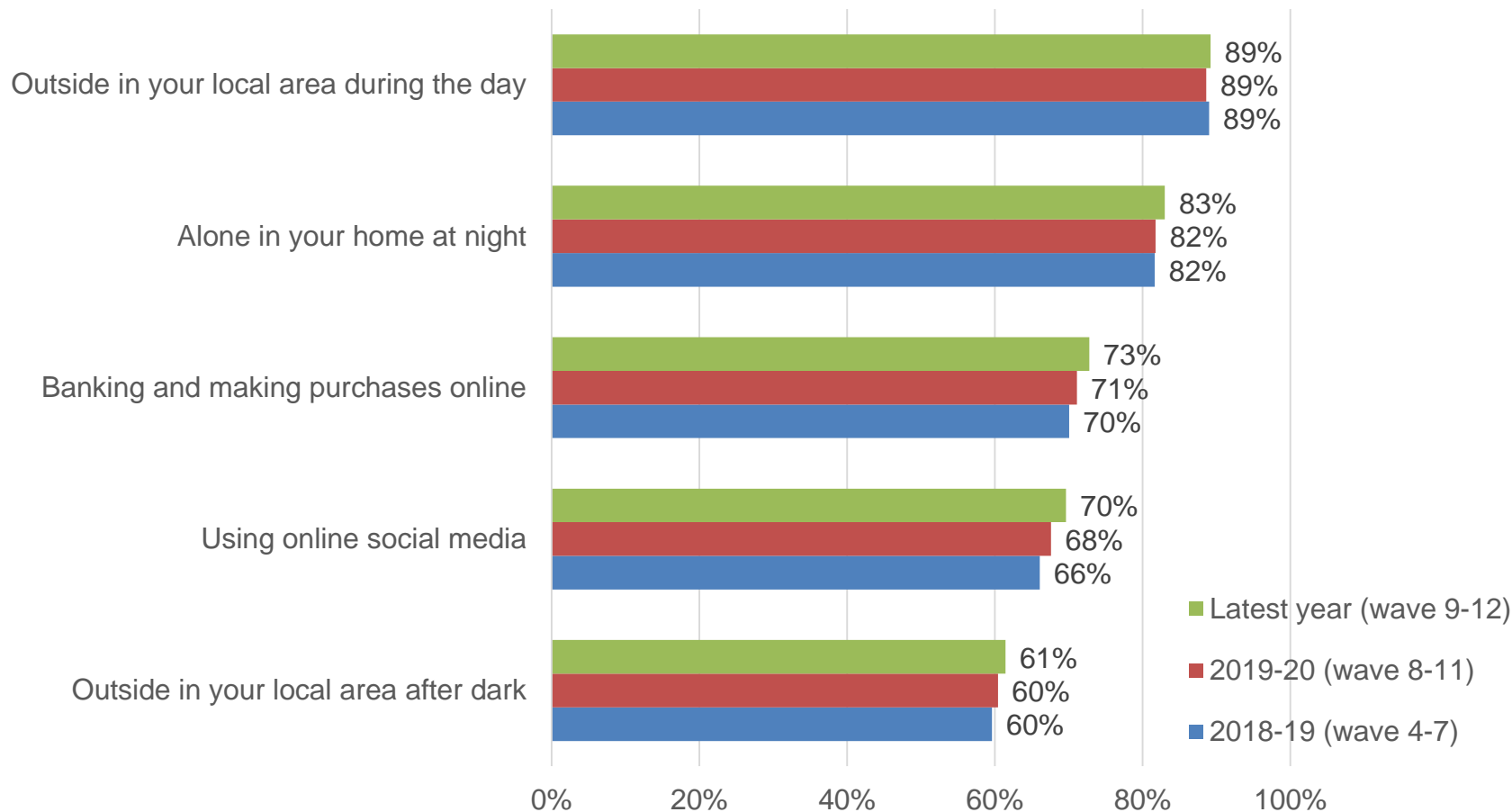
In the latest year, 89% of respondents feel very or fairly safe outside in their local area during the day – this falls to 61% when outside in their local area after dark

Please say how safe or unsafe you generally feel in the following situations: Latest year (wave 9-12)



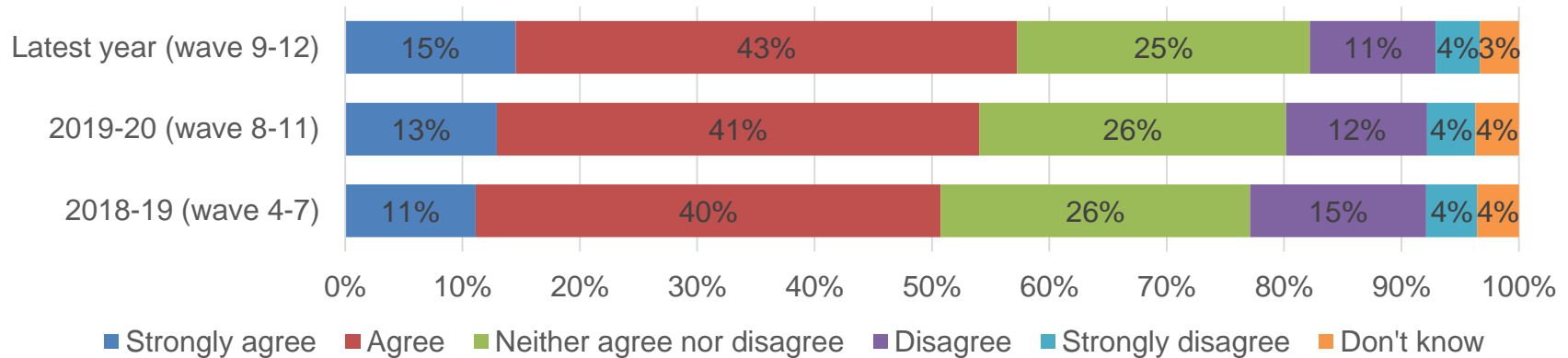
There are small changes in the perceptions of community safety between the latest year and 2017-18; indication of small improvements in some perceptions in latest year.

Please say how safe or unsafe you generally feel in the following situations: Very & fairly safe

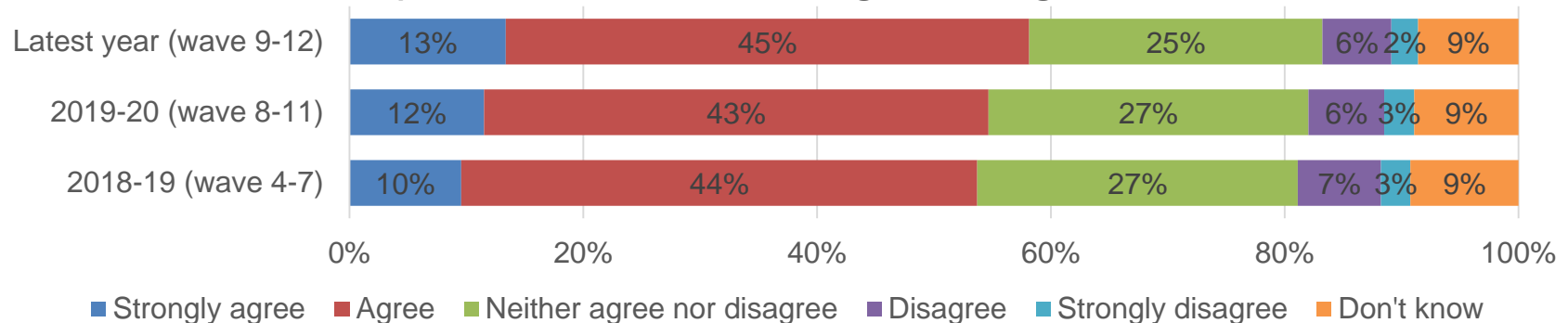


In the latest year, 58% agree that people from different backgrounds get on well and 57% agree that there is a sense of community where they live. The results are slightly higher than in 2017-18.

There is a sense of community



People from different backgrounds get on well

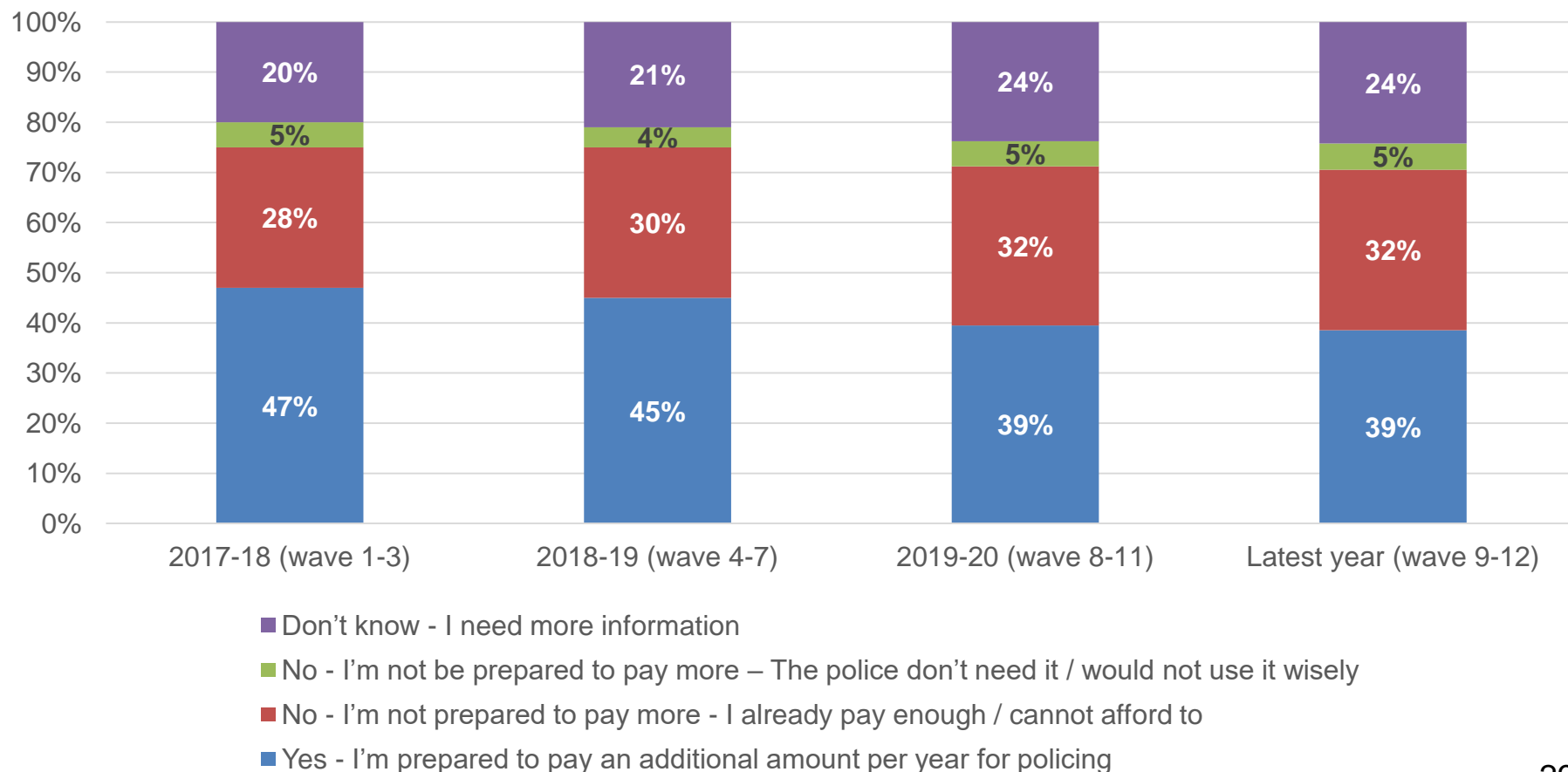


The statement was 'People from different ethnic backgrounds get on well' in 2017/18 wave 3



In the latest year, 39% of respondents would be prepared to pay more council tax towards policing, compared to 37% that would not. The proportion prepared to pay more is lower than in 2017-18.

Households in Nottinghamshire pay, on average, £219 a year towards policing as part of their Council Tax (Band D properties). To what extent would you be prepared to pay more?



Base: 2017-18 = 3,071, 2018-19 = 4,134, 2019-20 = 4,053, Last 12 months = 4,073 Q: Households in Nottinghamshire pay, on average, £219 a year towards policing as part of their Council Tax (Band D properties). To what extent would you be prepared to pay more?

In the latest year, 39% of respondents would be prepared to pay more council tax towards policing, compared to 37% that would not.

Households in Nottinghamshire pay, on average, £195 a year towards policing as part of their Council Tax (Band D properties). To what extent would you be prepared to pay more?

