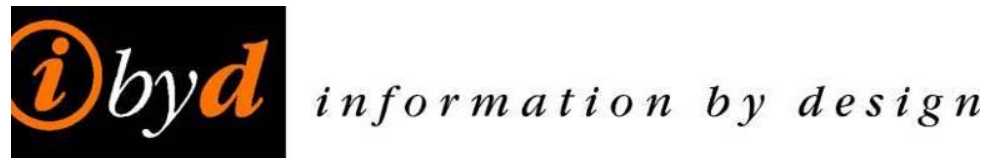




# Nottinghamshire PCC Police and Crime Survey – 2018-19 Quarter 4

**March 2019**



# Introduction and Methodology

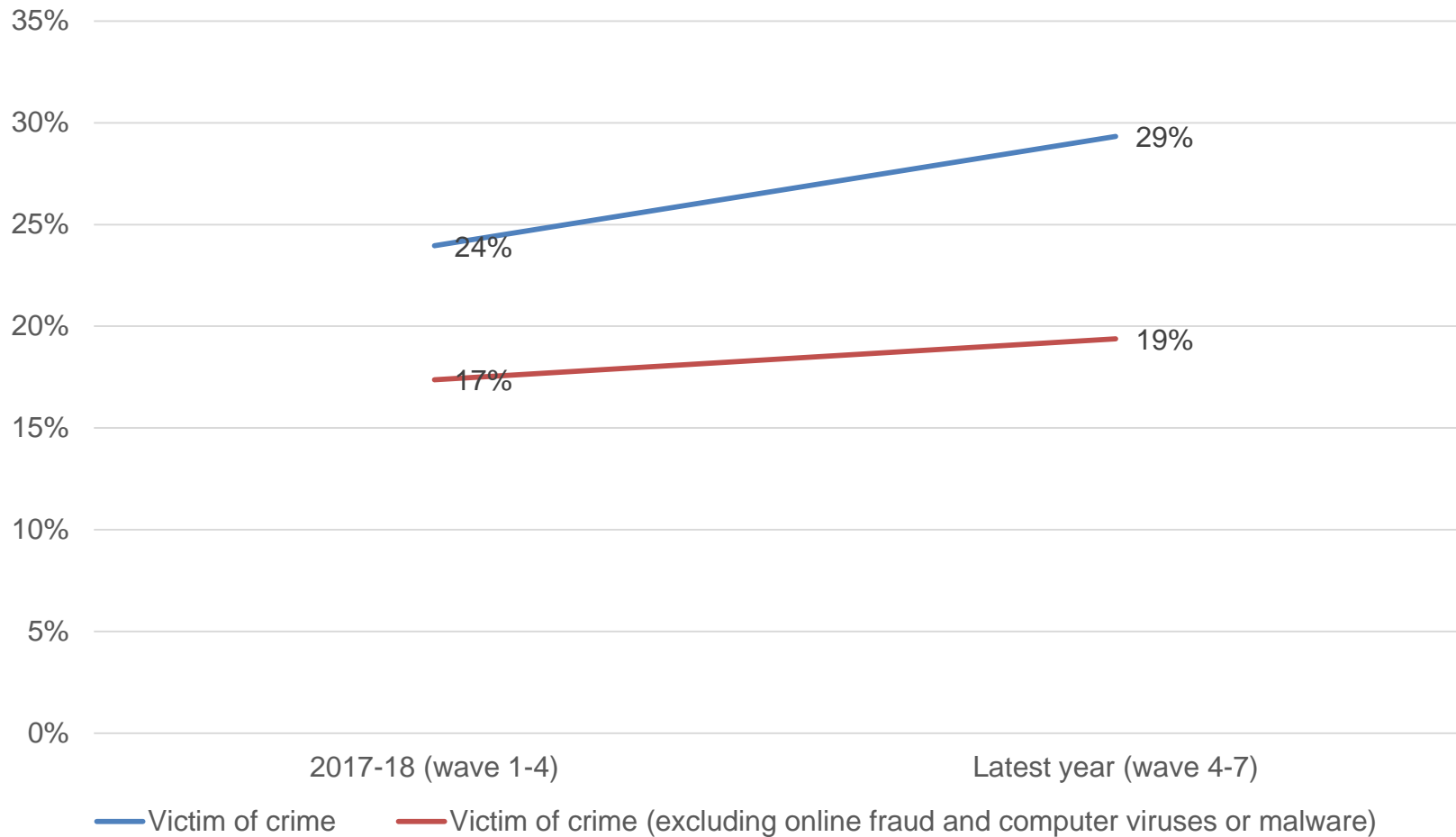
- ❑ This short presentation gives the ‘top-line’ results from the 4<sup>th</sup> quarter of the 2018/19 Nottinghamshire Police and Crime Survey (wave 7) conducted by Information by Design for Nottinghamshire PCC
- ❑ Fieldwork was conducted between 2<sup>nd</sup> and 17<sup>th</sup> February 2019.
- ❑ The survey was undertaken using an ‘assisted self-completion’ method, with a team of fieldwork staff working across selected LSOAs. One in eight LSOAs were selected from each of the following geographic areas:
  - Nottingham
  - South Notts - comprising Gedling, Broxtowe and Rushcliffe
  - BNS – comprising Bassetlaw, Newark and Sherwood
  - Mansfield and Ashfield
- ❑ In Wave 7, the achieved sample was 1,108 respondents broken down as follows:

Area	Local Authority	2017-18 (wave 1-4) Unweighted Count	2018-19 Q1 (wave 5) Unweighted Count	2018-19 Q2 (wave 6) Unweighted Count	2018-19 Q3 (wave 7) Unweighted Count	Latest year (wave 4-7) Unweighted Count
Bassetlaw, Newark and Sherwood	Bassetlaw	577	95	112	153	533
	Newark and Sherwood	519	190	132	124	548
	<b>Total</b>	<b>1096</b>	<b>285</b>	<b>244</b>	<b>277</b>	<b>1081</b>
Mansfield and Ashfield	Ashfield	600	137	178	126	568
	Mansfield	500	166	86	151	563
	<b>Total</b>	<b>1100</b>	<b>303</b>	<b>264</b>	<b>277</b>	<b>1131</b>
Nottingham	<b>Nottingham</b>	<b>1087</b>	<b>235</b>	<b>280</b>	<b>277</b>	<b>1066</b>
South Nottinghamshire	Broxtowe	378	39	110	92	358
	Gedling	368	107	77	132	411
	Rushcliffe	374	112	98	53	336
	<b>Total</b>	<b>1120</b>	<b>258</b>	<b>285</b>	<b>277</b>	<b>1105</b>

In the latest year, 29% of respondents had been victim of a crime in the last 12 months; higher than in 2017-18, but reduces to 19% when online fraud and computer misuse are excluded.

---

In the last 12 months, have you personally been a victim of crime?



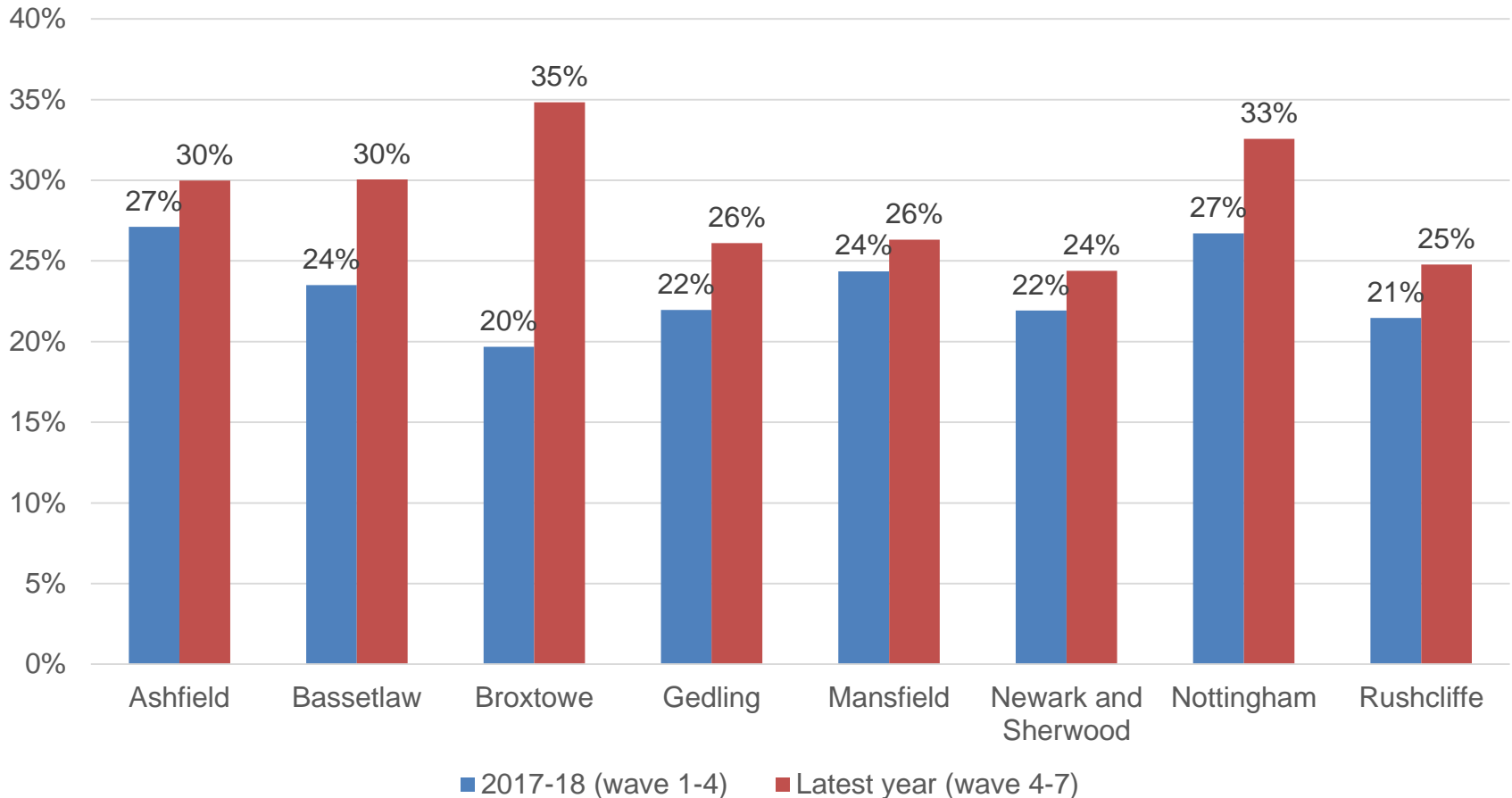
---

Base: 2017-18 = 4,255, Last 12 months = 4,251

Q: In the last 12 months, have you personally been a victim of any of the following crime types?

# In the latest year, respondents from Broxtowe were most likely to have been a victim of crime; the increase between 2017-18 and the latest aggregated year is highest for Broxtowe

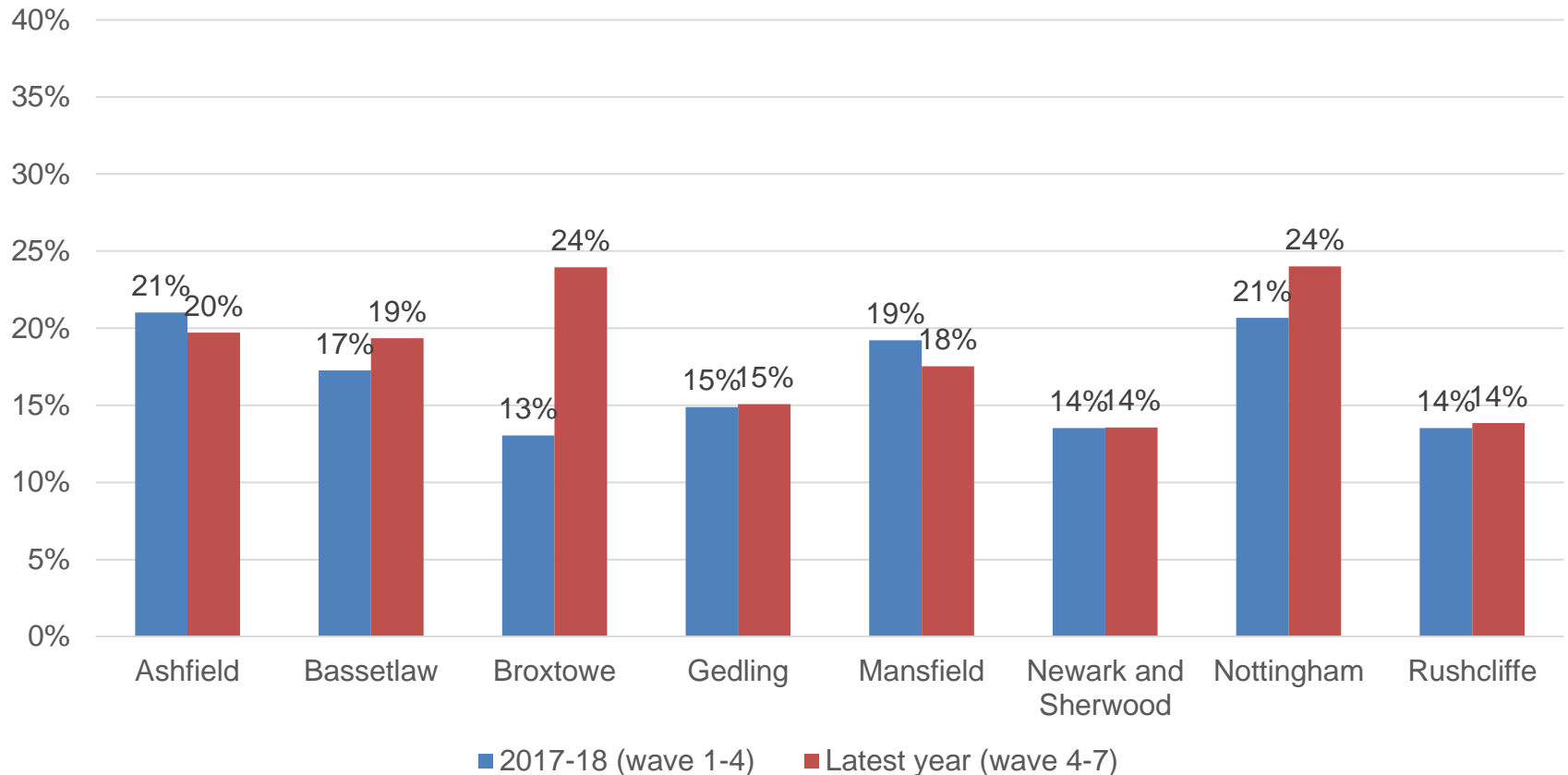
In the last 12 months, have you personally been a victim of crime?



Base Last 12 months: Ashfield = 463, Bassetlaw = 434, Broxtowe = 417, Gedling = 436, Mansfield = 403, Newark & Sherwood = 458, Nottingham = 1,212, Rushcliffe = 429 Q: In the last 12 months, have you personally been a victim of any of the following crime types?

When online fraud and computer misuse are excluded, in the latest year, respondents from Broxtowe and Nottingham were most likely to have been a victim of crime, the increase between 2017-18 and the latest aggregated year is highest for Broxtowe

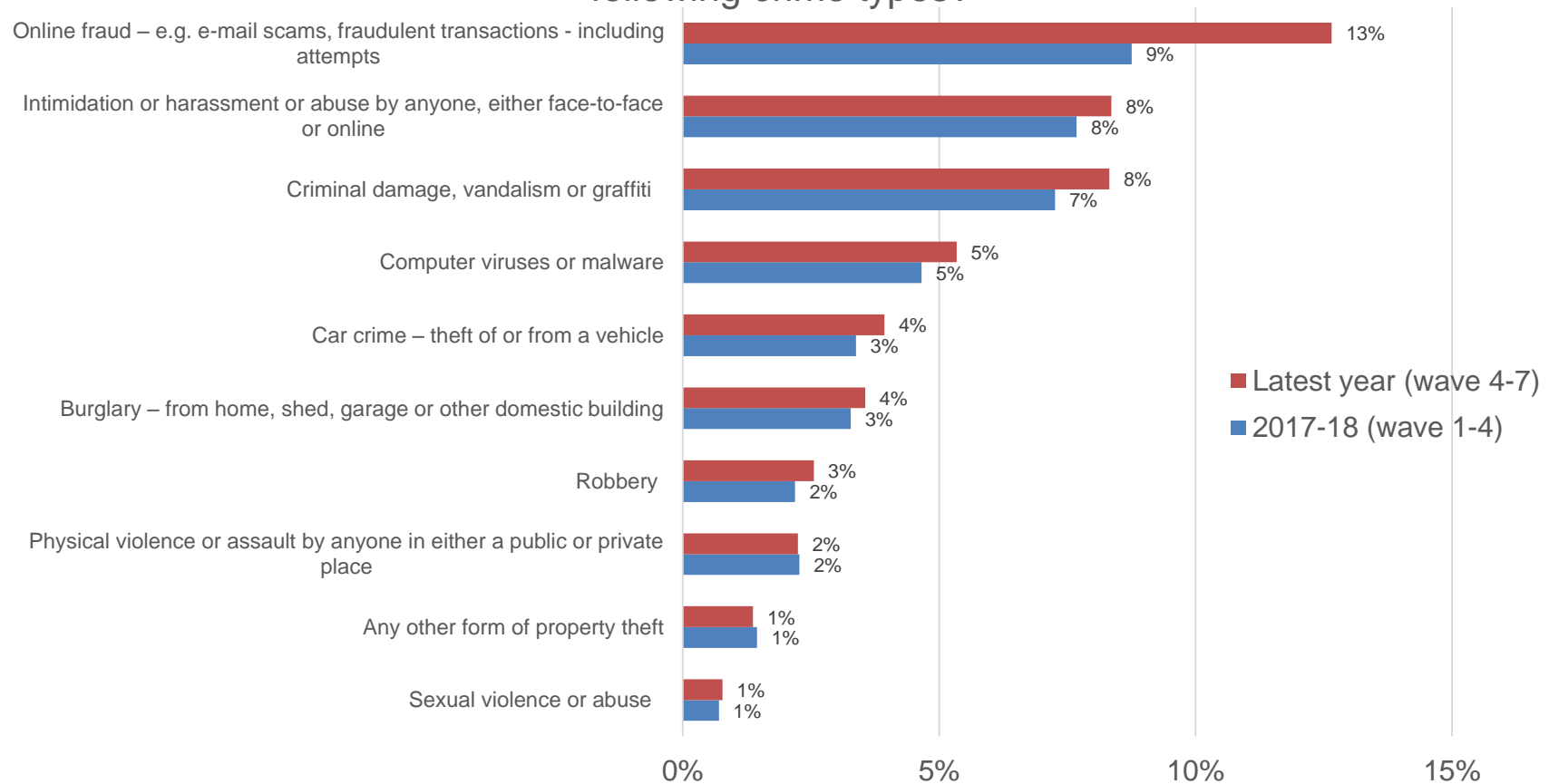
In the last 12 months, have you personally been a victim of crime? (excluding online fraud and computer viruses or malware)



# In the latest year, 29% of respondents had been victim of a crime; online fraud remains the most commonly experienced crime

- 3% of respondents had experienced hate related crime and 2% had experienced domestic violence/abuse related crime in the last 12 months

In the last 12 months, have you personally been a victim of any of the following crime types?



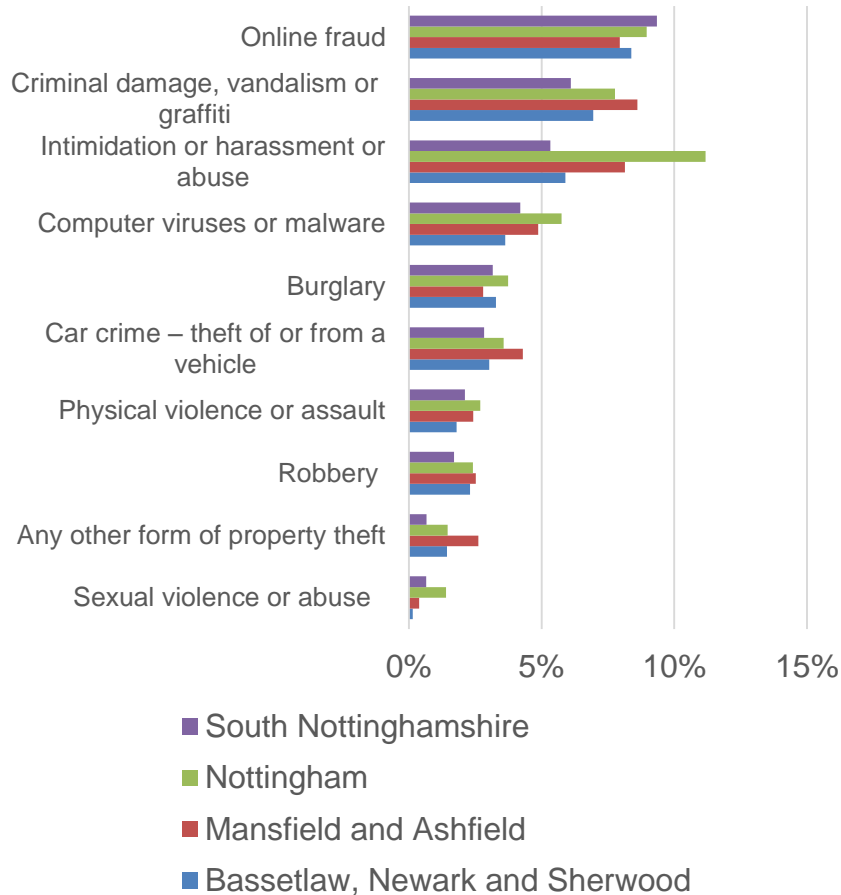
Base: 2017-18 = 4,255, Last 12 months = 4,251

Q: In the last 12 months, have you personally been a victim of any of the following crime types?

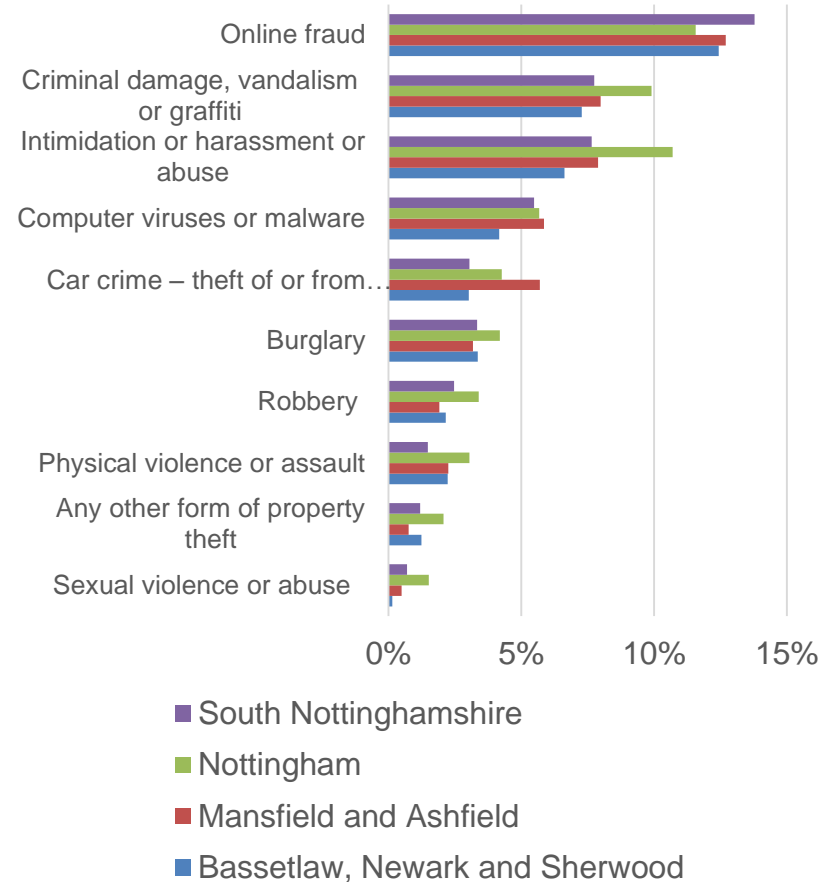


# In the latest year, 28% of respondents from South Nottinghamshire, 27% from Bassetlaw, Newark and Sherwood, 28% from Mansfield and Ashfield and 33% from Nottingham had been victim of a crime

In the last 12 months, have you personally been a victim of any of the following crime types? – 2017-18 (wave 1-4)



In the last 12 months, have you personally been a victim of any of the following crime types? – Latest year (wave 4-7)

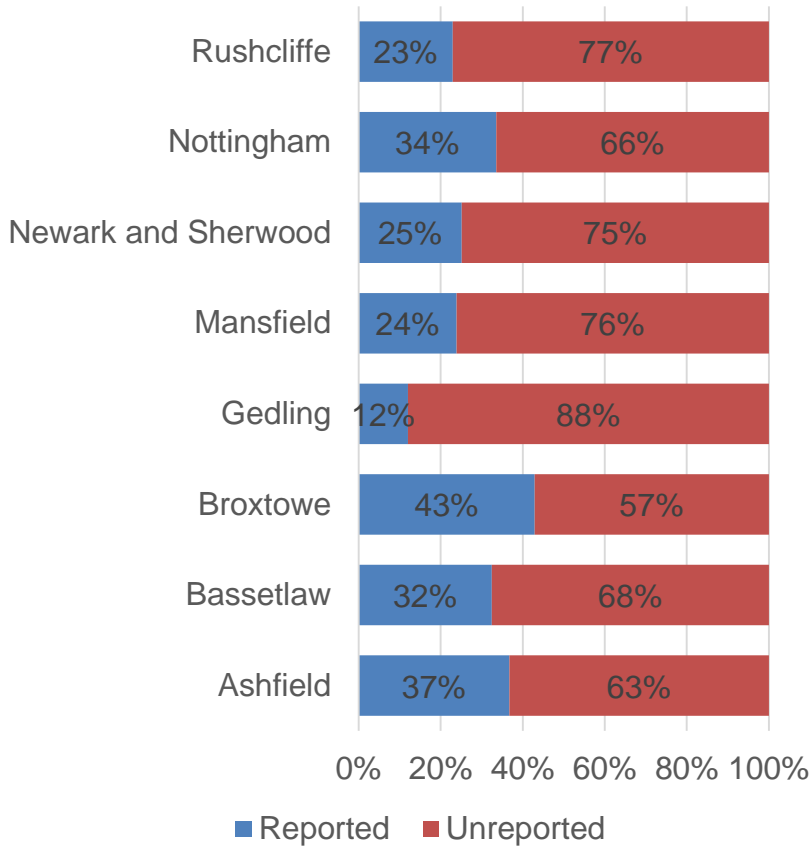


Base Last 12 Months: Bassetlaw, Newark and Sherwood = 892, Mansfield and Ashfield = 866, Nottingham = 1,212, South Nottinghamshire = 1,281 Q: In the last 12 months, have you personally been a victim of any of the following crime types?

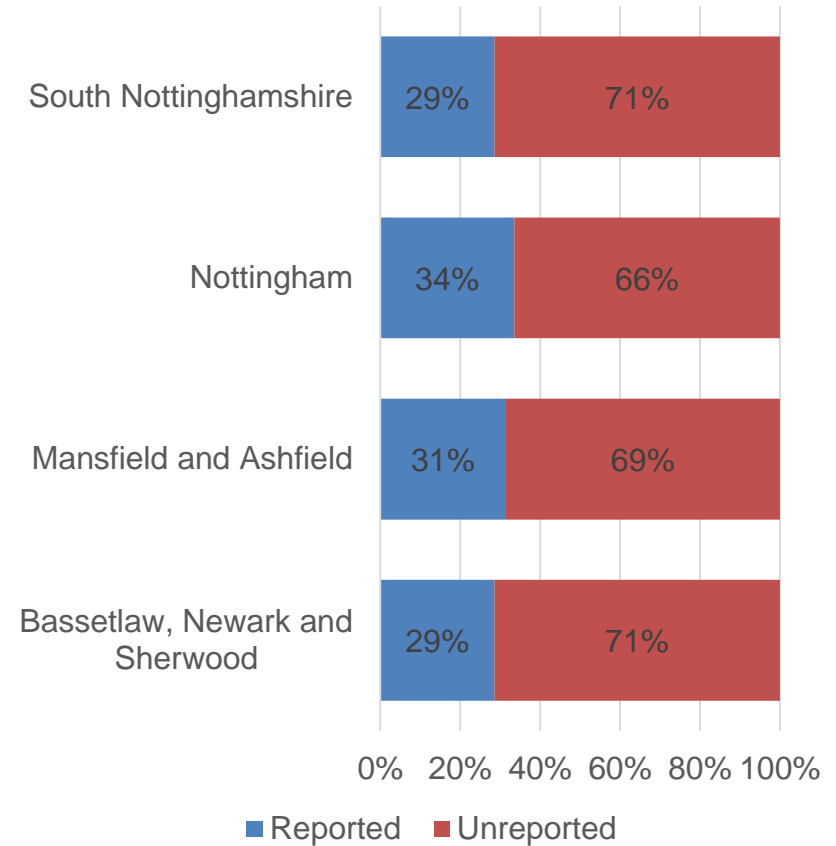


In the latest year, the proportion of crimes that had been reported was 31% in Mansfield and Ashfield, 34% in Nottingham, 29% Bassetlaw, Newark and Sherwood and 29% in South Nottinghamshire; Broxtowe shows a rise in reported crimes from the 2017-18 year

Proportion of reported and unreported crimes – Latest year (wave 4-7)



Proportion of reported and unreported crimes – Latest years (wave 4-7)

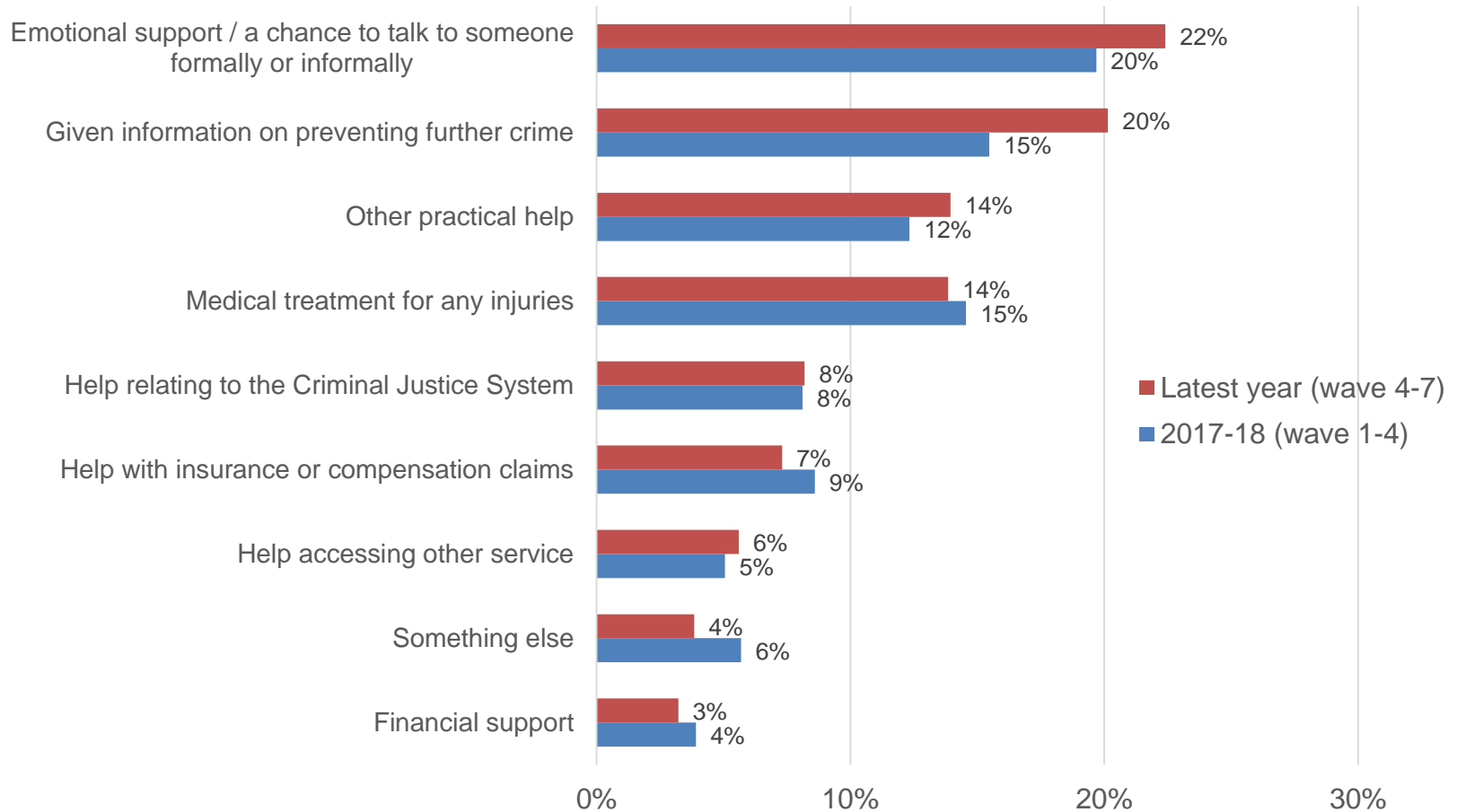


Base: Ashfield = 125, Bassetlaw = 124, Broxtowe = 137, Gedling = 104, Mansfield = 9., Newark & Sherwood = 102, Nottingham = 360, Rushcliffe = 93 Q: In the last 12 months, **how many times** have you personally been a victim of the following crime types? (Trimmed to 30) Assuming, if victim more than once, all reported/unreported same as last



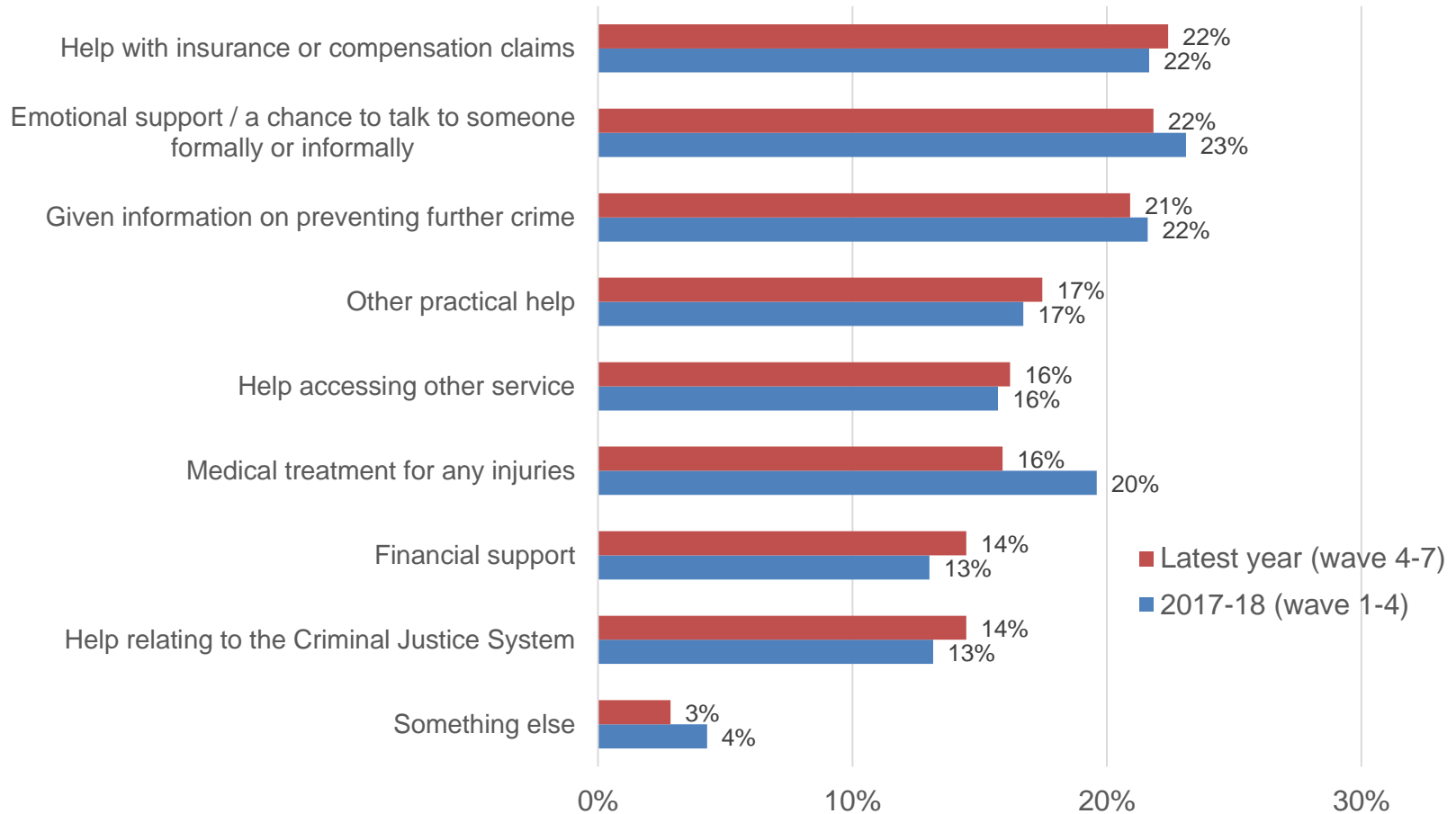
# In the latest year, 42% of respondents who had been a victim of crime had received some form of information, advice or support

Did you receive any of the following types of information, advice or support when you were the victim of this crime?



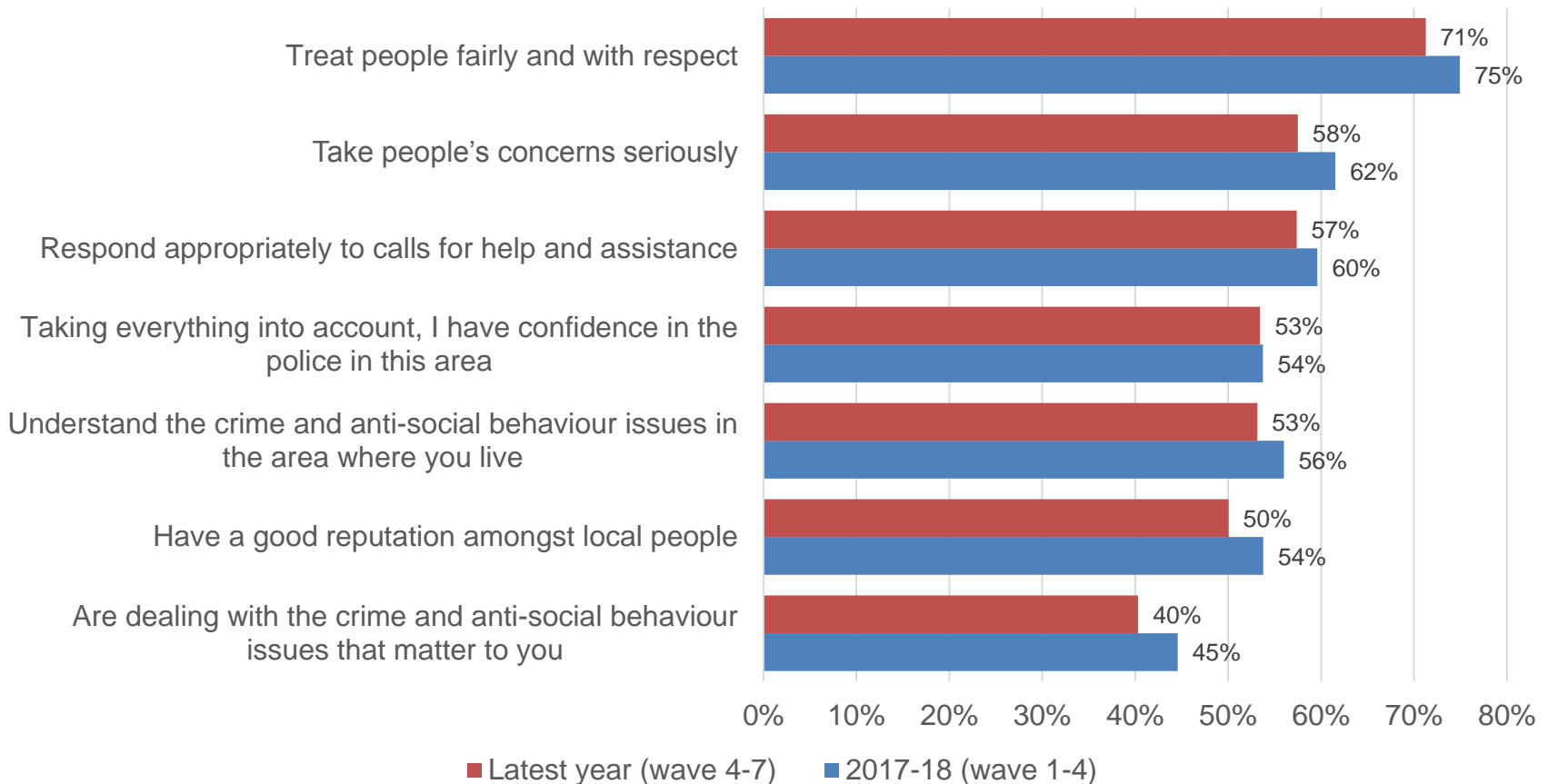
# In the latest year, 42% of respondents who had been a victim of crime would have liked to have received some form of information, advice or support

Would you have liked to receive any of the following types of information, advice or support when you were the victim of this crime?



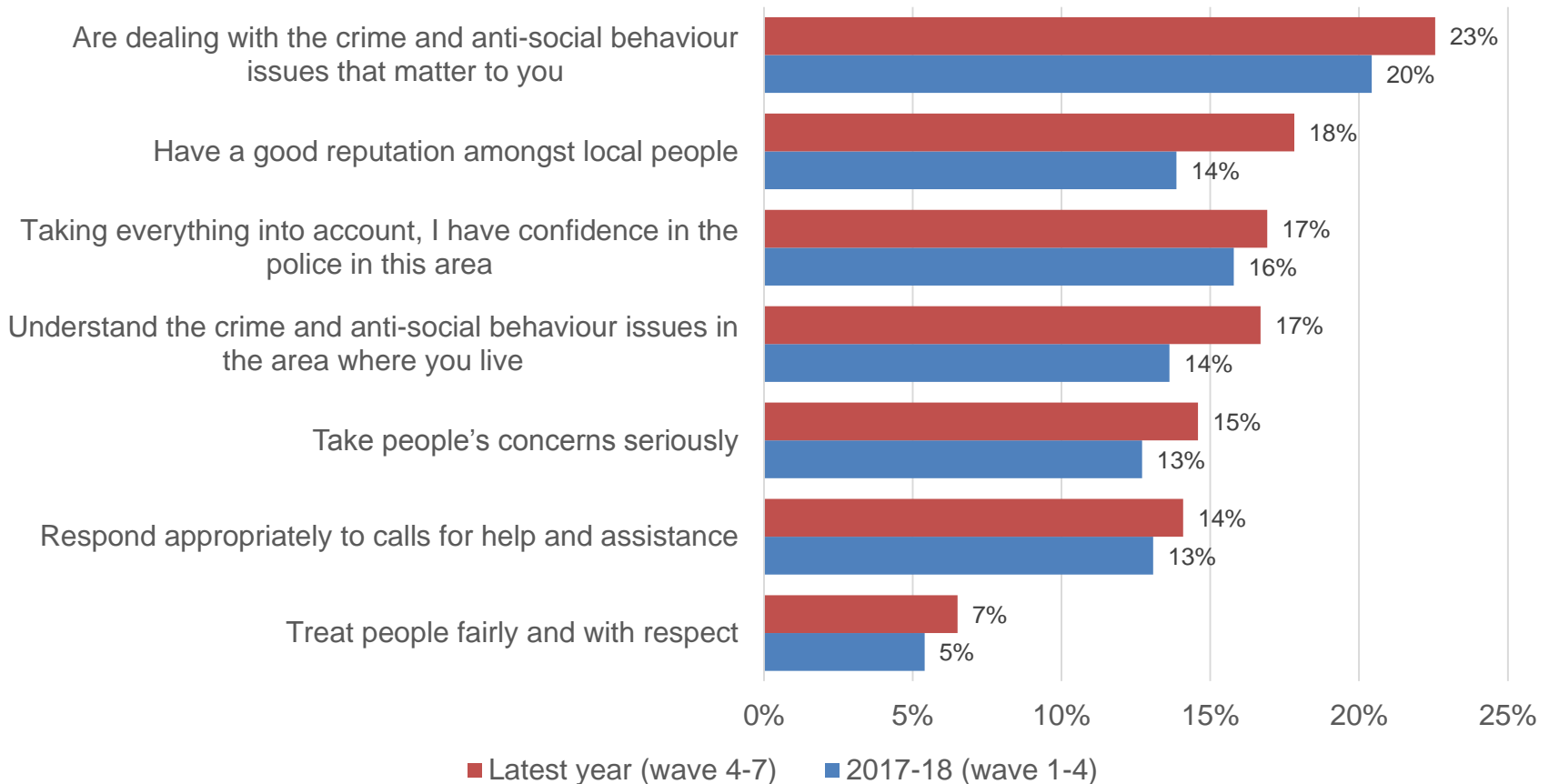
Excluding those who answered 'don't know', in the latest year 71% agreed that the police in their local area treat people fairly and with respect. Some small declines in agreement from 2017-18.

Please say how much you agree or disagree with each of the following statements about the police in your local area: - **Strongly Agree & Agree** – Excluding 'Don't know'



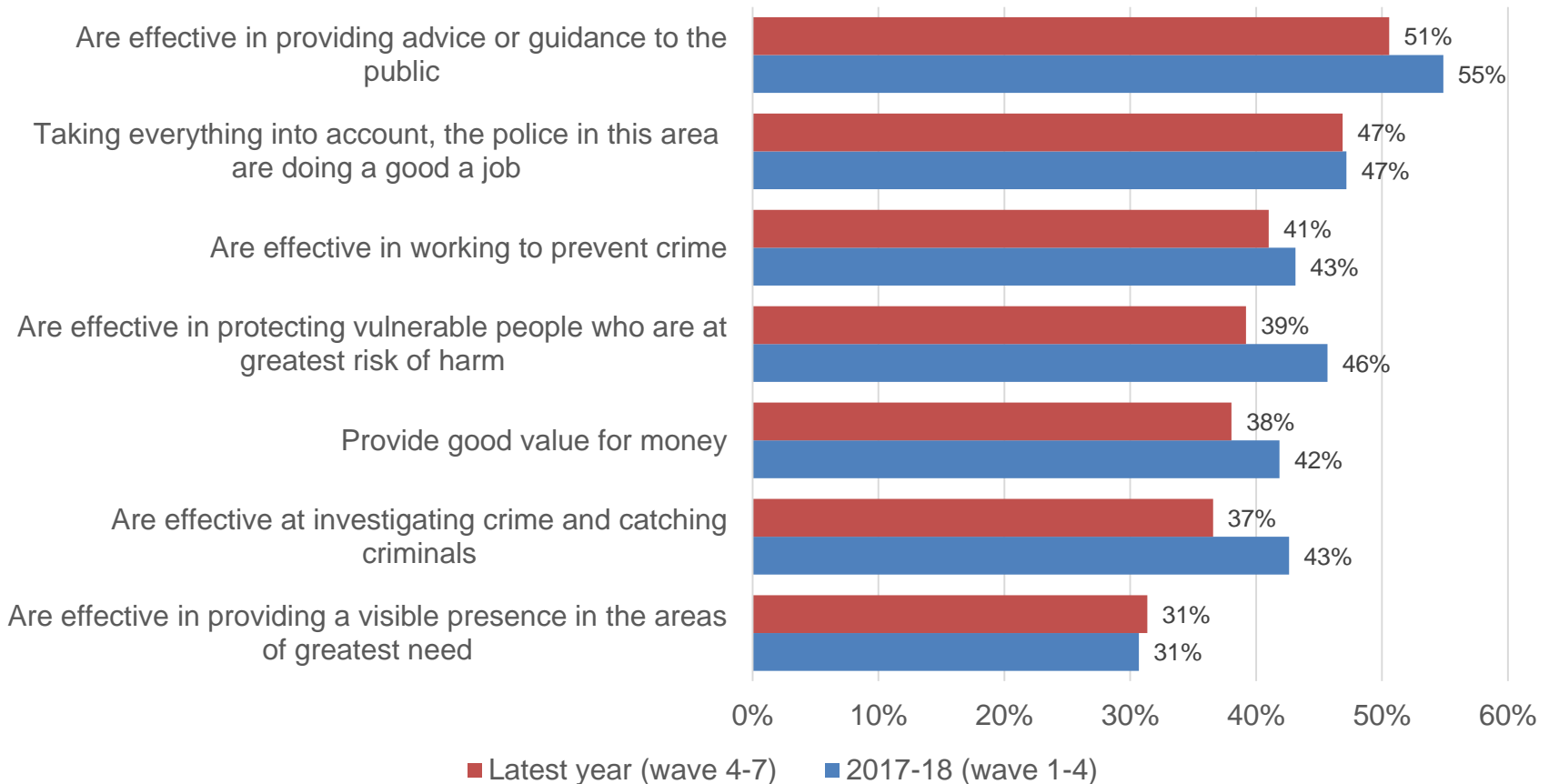
# Excluding those who answered 'don't know', in the latest year 23% of respondents disagreed that the police in their local area are dealing with the crime and anti-social behavior issues that matter to them

Please say how much you agree or disagree with each of the following statements about the police in your local area: - **Strongly Disagree & Disagree** – Excluding 'Don't know'



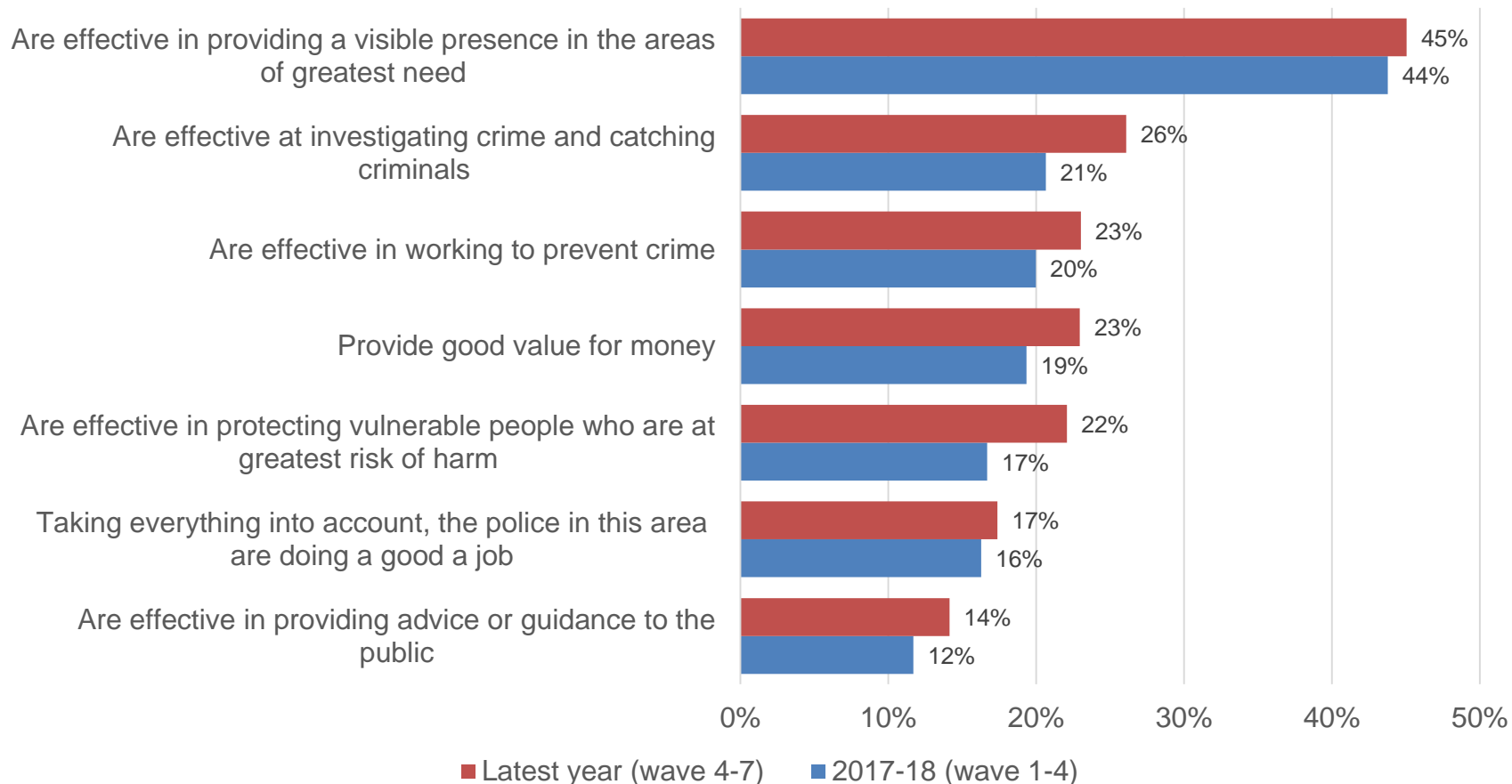
# Excluding those who answered 'don't know', in the latest year 51% agreed that the police in their local area are effective in providing advice or guidance to the public; again some small declines from 2017-18

Please say how much you agree or disagree with each of the following statements about the police in your local area: - **Strongly Agree & Agree** – Excluding 'Don't know'



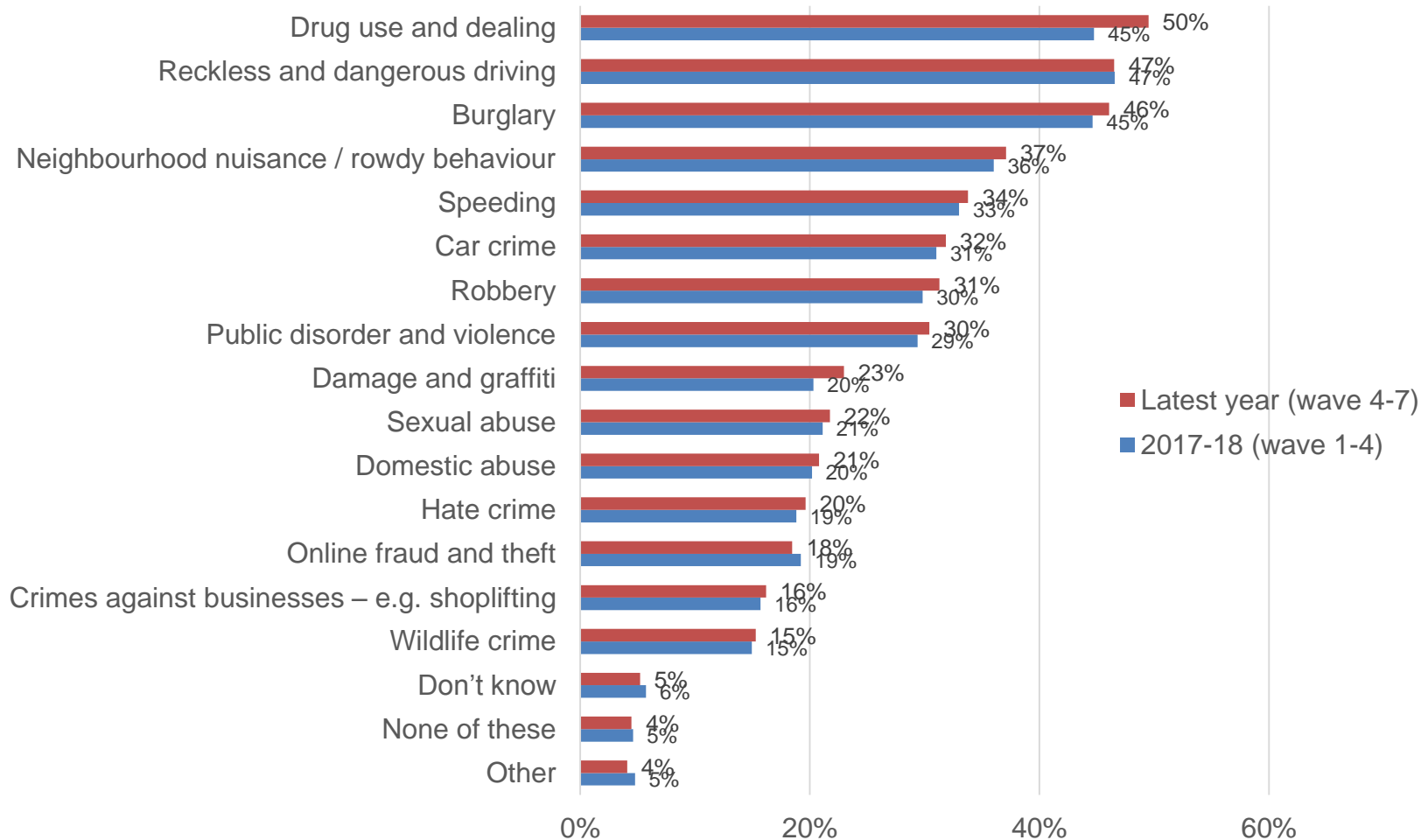
# Excluding those who answered 'don't know', in the latest year 45% of respondents disagreed that the police in their local area are effective in providing a visible presence in the area of greatest need

Please say how much you agree or disagree with each of the following statements about the police in your local area: - **Strongly Disagree & Disagree** – Excluding 'Don't know'



# Drug use and dealing, reckless and dangerous driving, and burglary are the top crime and ASB issues respondents would like to see tackled in both the latest year and 2017-18.

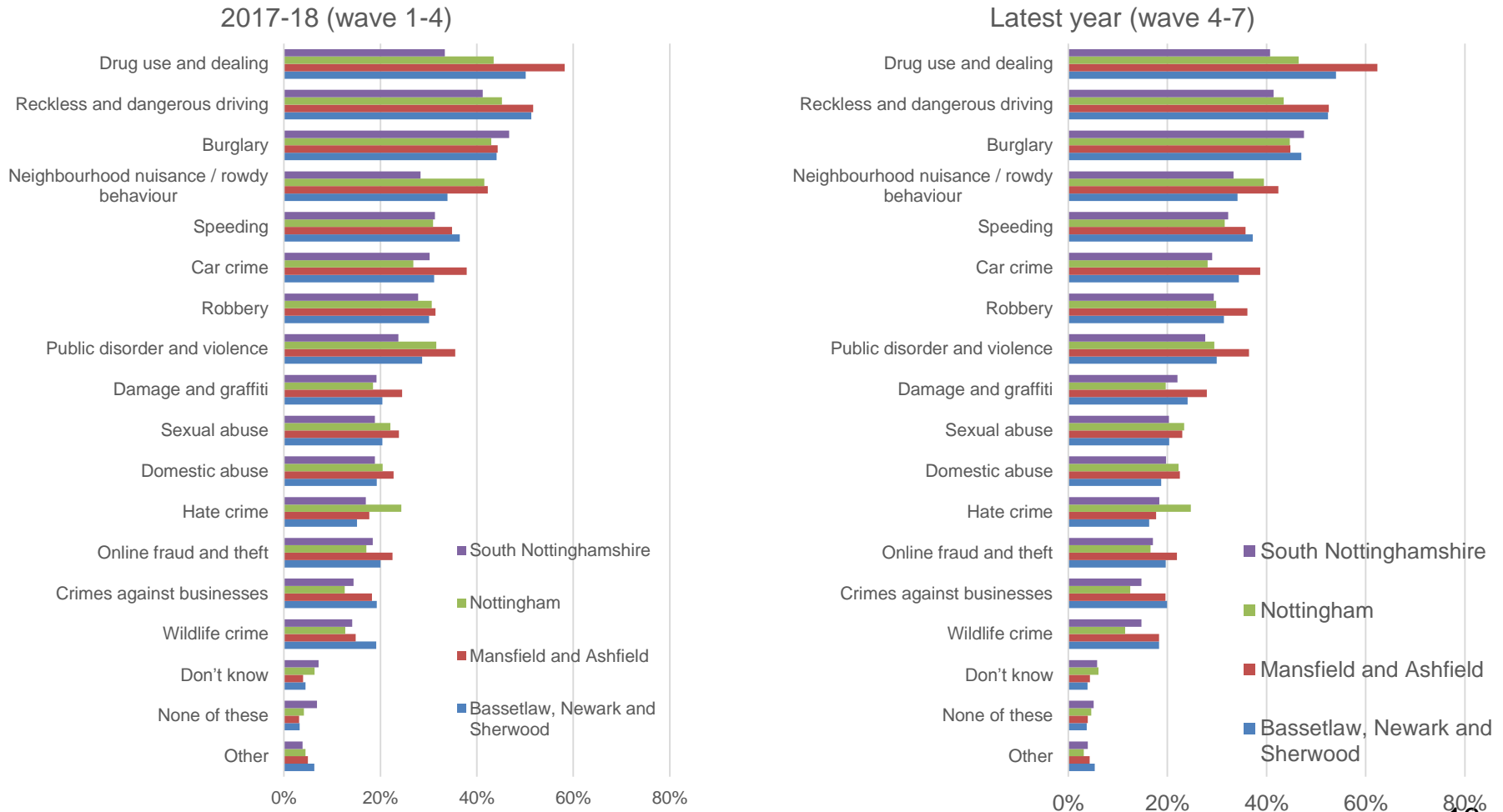
Are there any specific crime or anti-social behaviour issues that you would like to see the police and other agencies do more to tackle in your area?



Base: 2017-18 = 4,127, Last 12 months = 4,051 Q: And are there any specific crime or anti-social behaviour issues that you would like to see the police and other agencies do more to tackle in your area?

# Drug use and dealing, reckless and dangerous driving, and burglary are the top 3 crimes in all CSP areas in the latest year.

Are there any specific crime or anti-social behaviour issues that you would like to see the police and other agencies do more to tackle in your area?

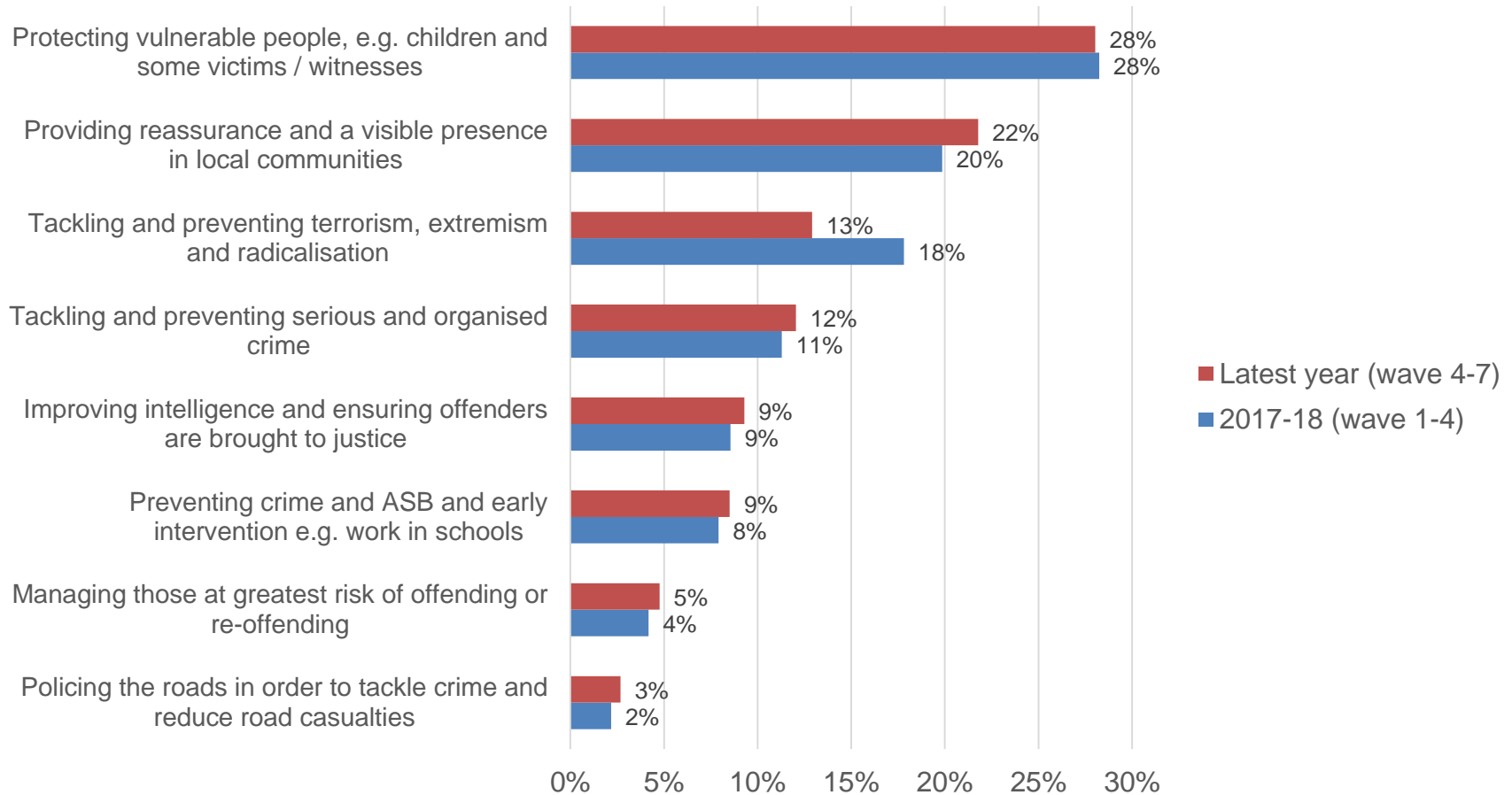


Base: 2017-18 = 4,127, Last 12 months = 4,051 Q: And are there any specific crime or anti-social behaviour issues that you would like to see the police and other agencies do more to tackle in your area?



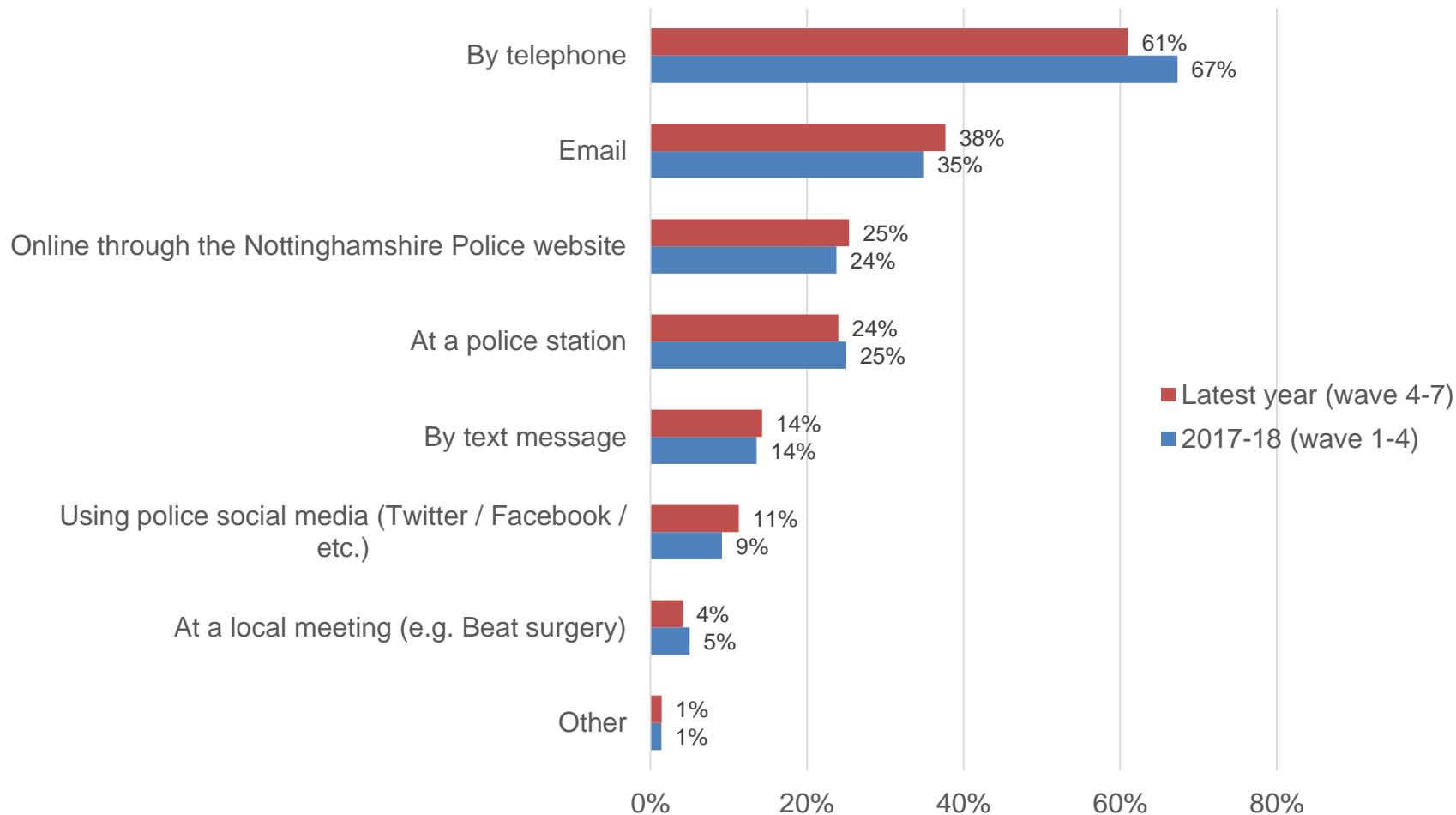
# In the latest year, 28% of respondents ranked protecting vulnerable people as the aspect they would most like to see the police focus their resources on

Responding to emergencies will always be a top priority for Nottinghamshire Police, but beyond this, on what activity would you most like to see the police focus their resources over the coming year?



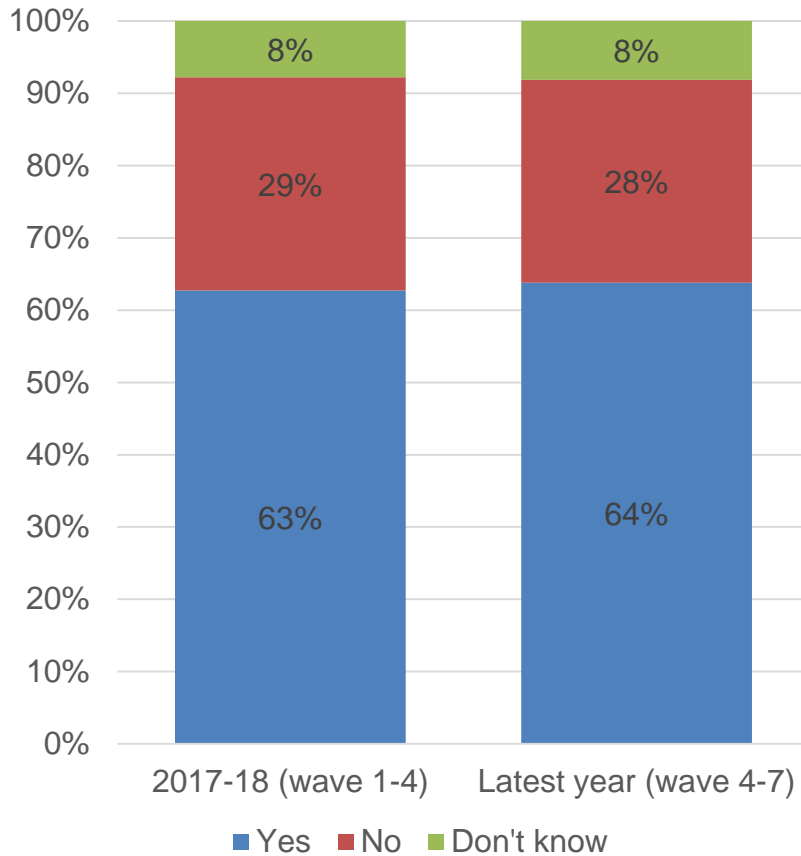
# In the latest year, 61% of respondents would prefer to contact their local policing team by phone if they had a non-urgent issue – a small reduction from 2017-18

If you had a non-urgent issue that you wanted to let your local policing team know about, which of these would be your preferred way to make contact?

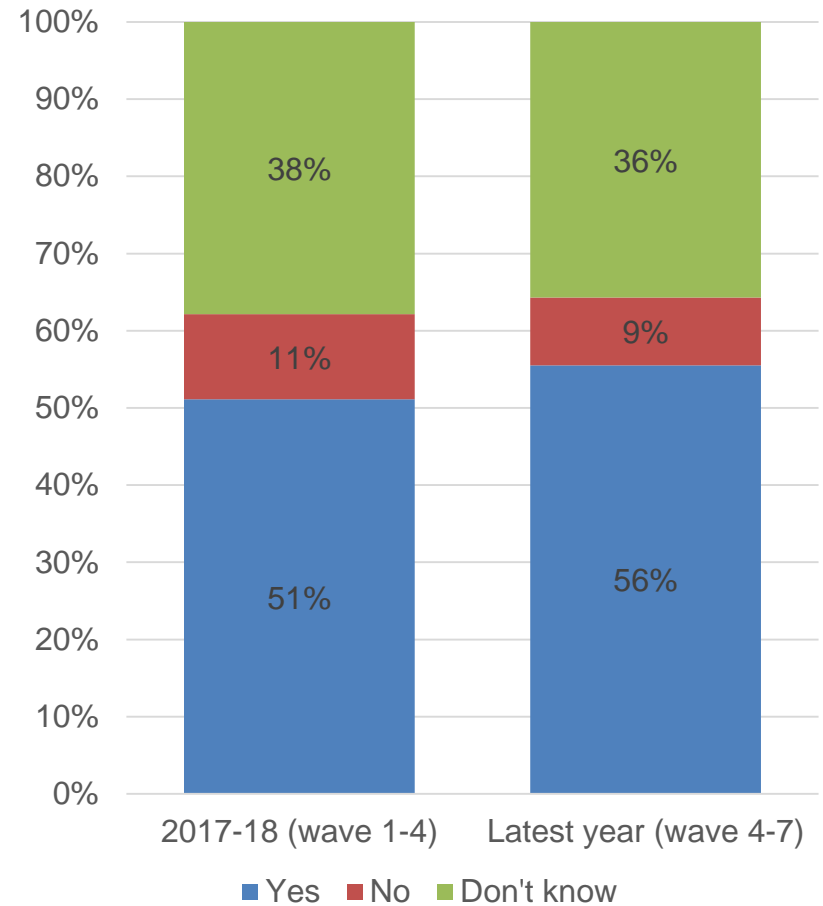


In the latest year, 64% of respondents were aware of the level of police funding cuts and 56% felt that funding cuts have affected policing in their area. There has been a small increase in the proportion of respondents who feel funding cuts have affected policing in the area from 2017-18.

Before today, were you aware of the level of police funding cuts over recent years?

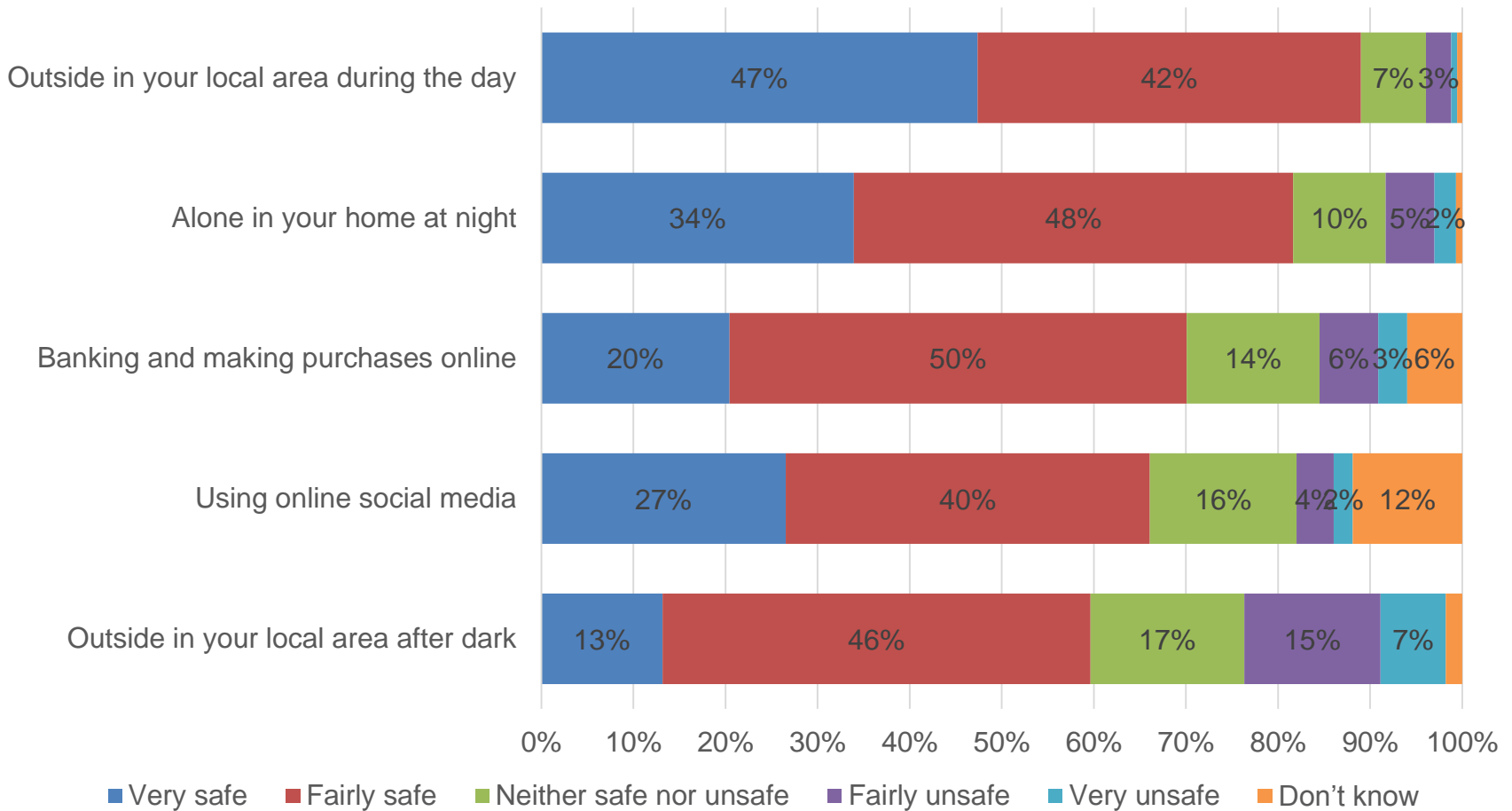


Do you feel that funding cuts have affected policing in your area?



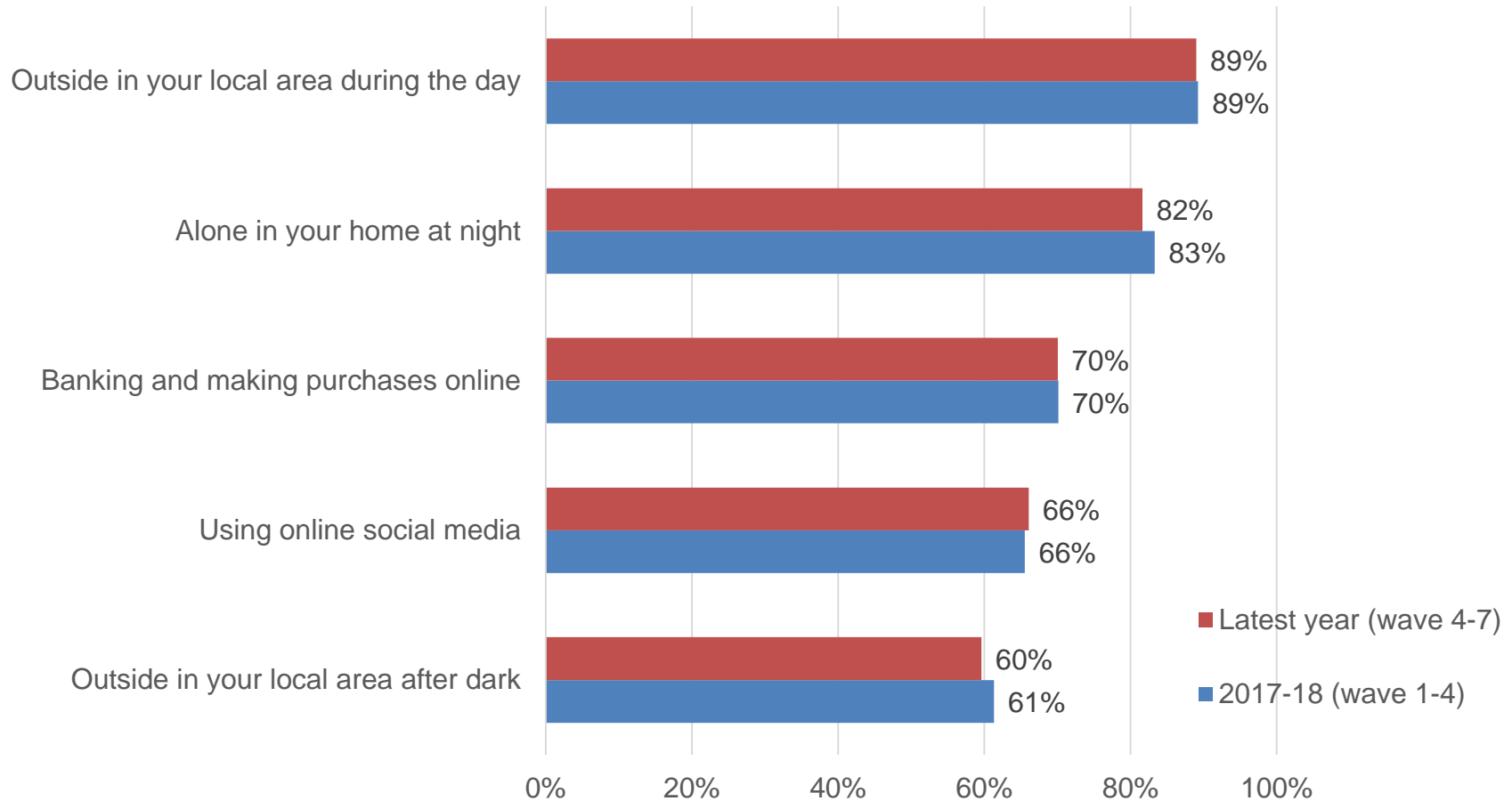
# In the latest year, 89% of respondents feel very or fairly safe outside in their local area during the day – this falls to 60% when outside in their local area after dark

Please say how safe or unsafe you generally feel in the following situations: Latest year (wave 4-7)



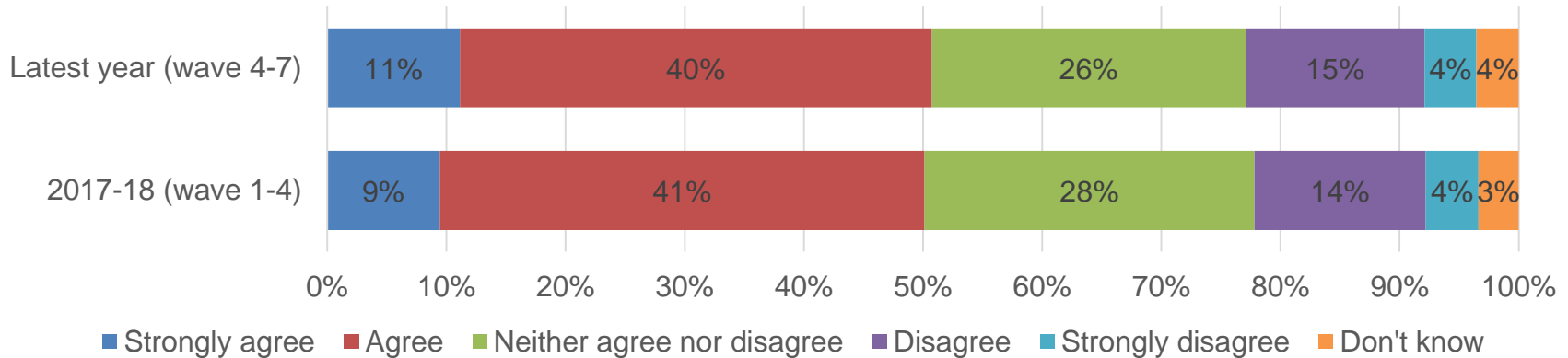
# There are only very small changes in the perceptions of community safety between the latest year and 2017-18

Please say how safe or unsafe you generally feel in the following situations: Very & fairly safe

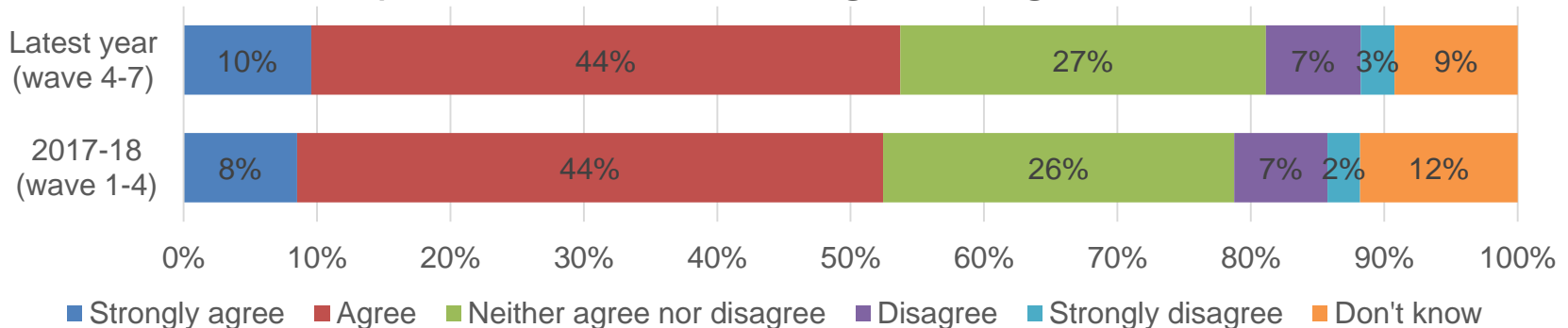


In the latest year, 54% agree that people from different backgrounds get on well and 51% agree that there is a sense of community where they live. The results are similar to 2017-18.

### There is a sense of community



### People from different backgrounds get on well

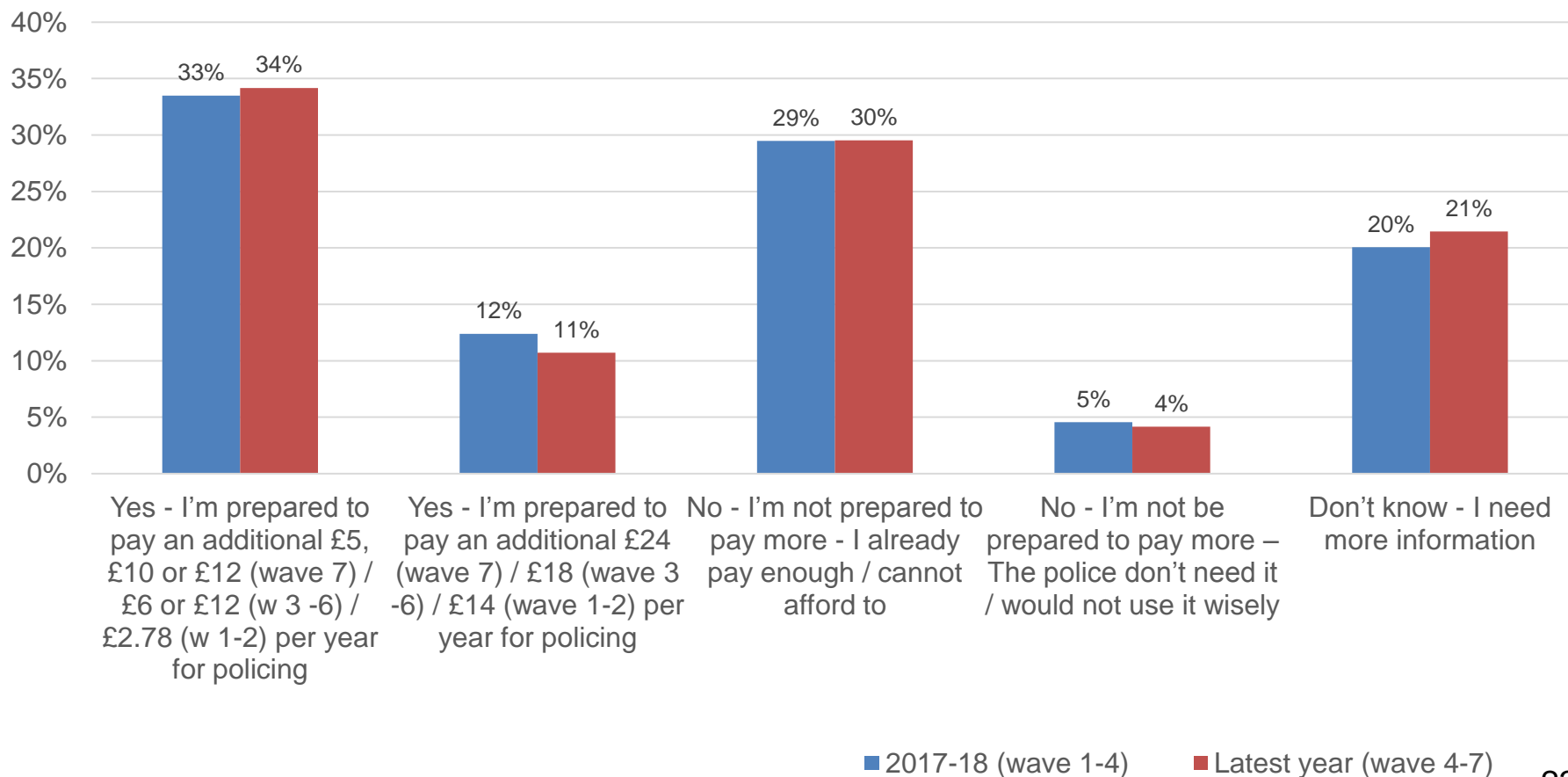


The statement was 'People from different ethnic backgrounds get on well' in 2017/18 Q3



In the latest year, 45% of respondents would be prepared to pay more council tax towards policing, compared to 34% that would not. This is similar to 2017-18 with a slight change in the amount prepared to pay.

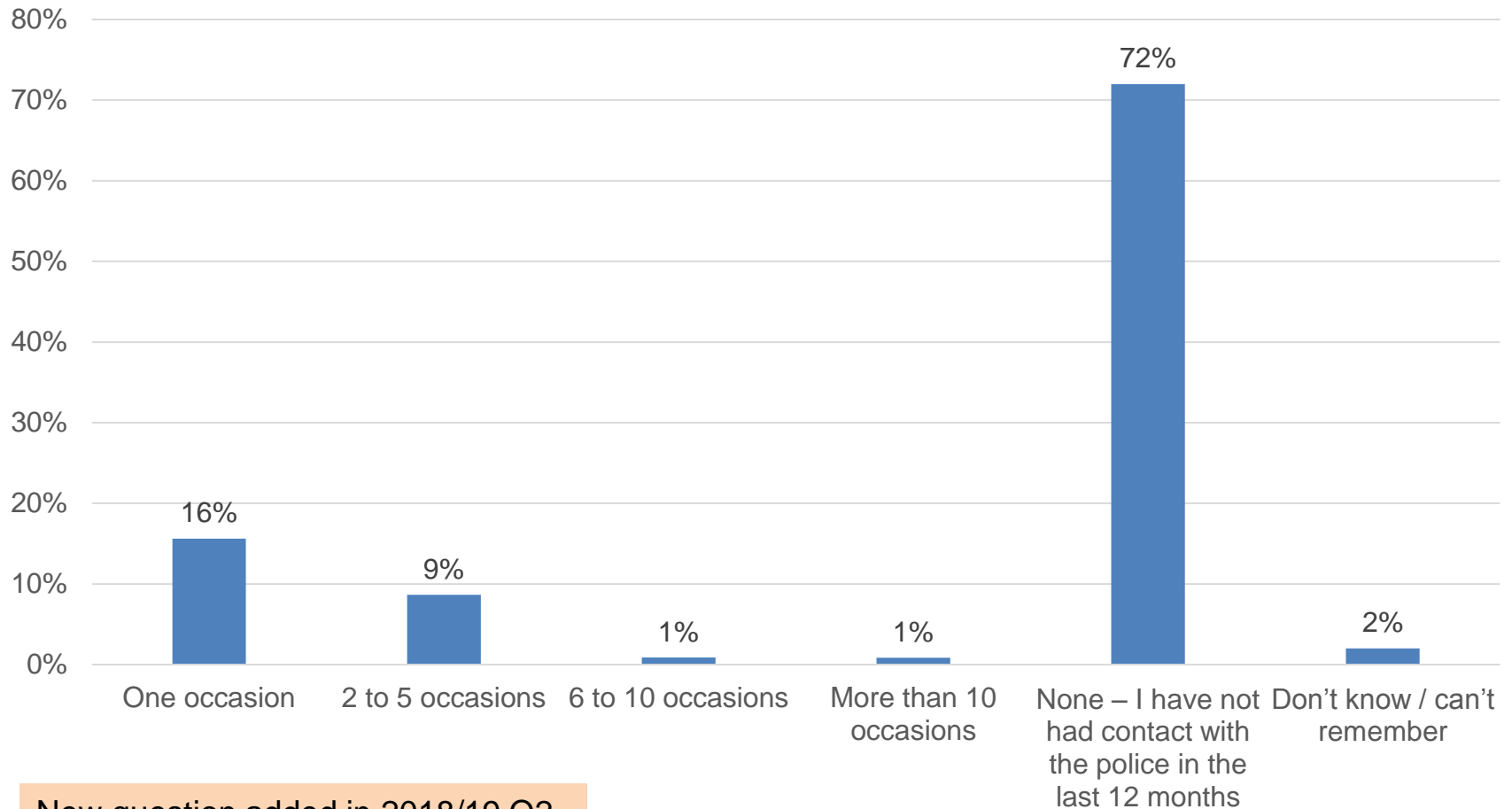
Households in Nottinghamshire pay, on average, £195 a year towards policing as part of their Council Tax (Band D properties). To what extent would you be prepared to pay more?



Base: 2017-18 = 4,145, Last 12 months = 4,134 Q: Households in Nottinghamshire pay, on average, £195 a year towards policing as part of their Council Tax (Band D properties). To what extent would you be prepared to pay more?

# 26% respondents had contacted Nottinghamshire Police in the last 12 months

On how many occasions in the past 12 months have you had contact with Nottinghamshire Police?

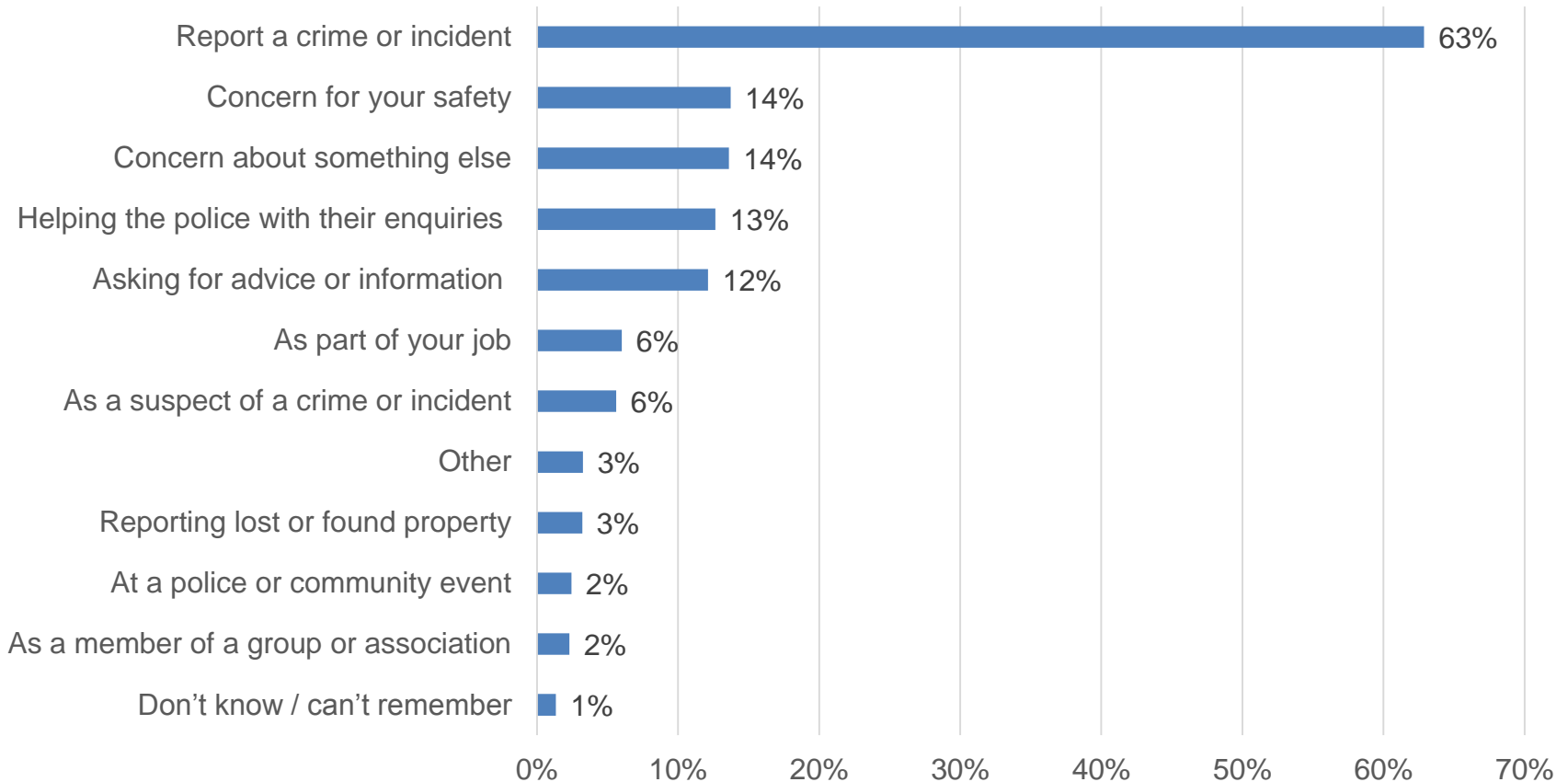


New question added in 2018/19 Q2



# Of the 26% of respondents that had contacted the police in the last 12 months, 63% had done so to report a crime or incident

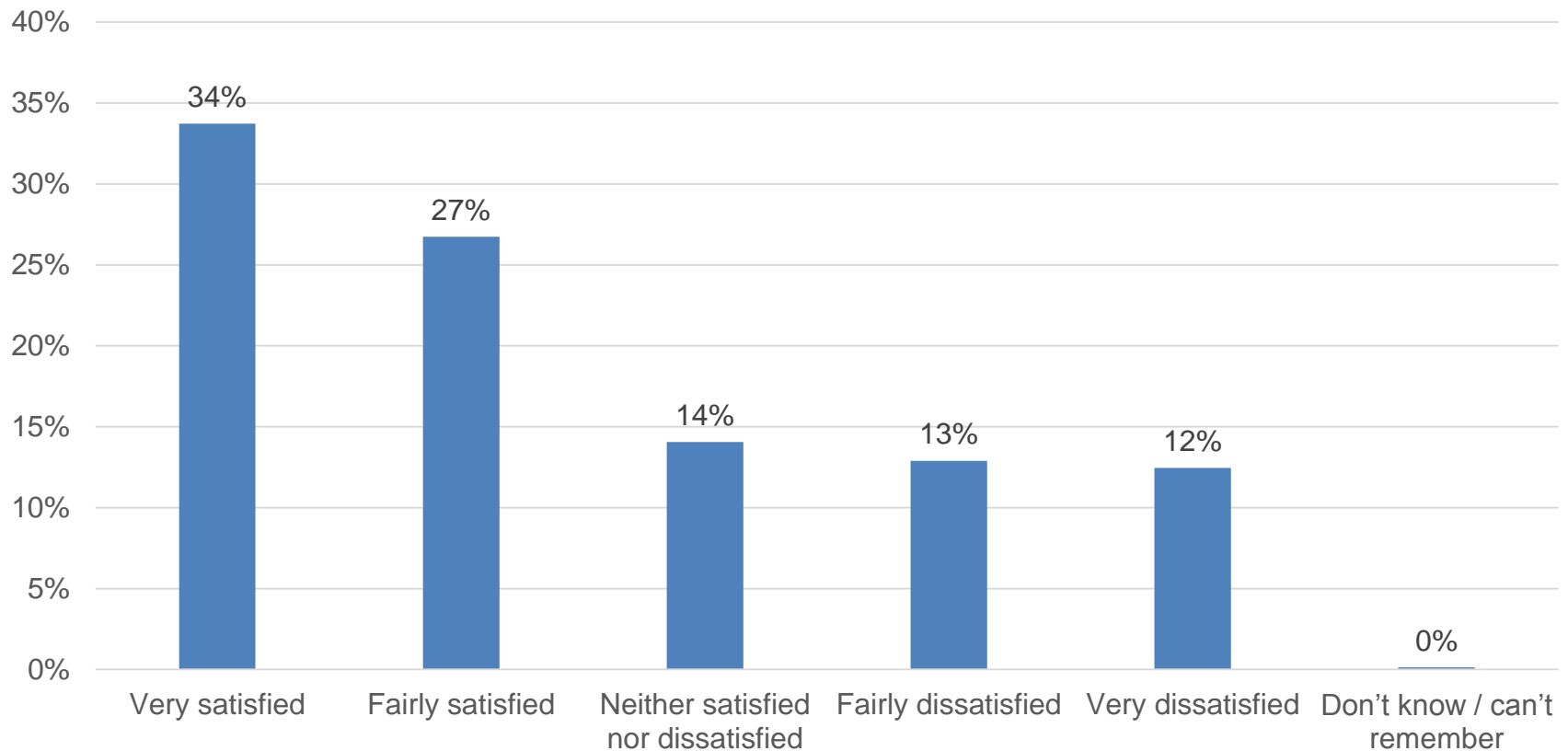
Thinking back to the occasions that you have had contact with the police over the last 12 months, what were the reasons?



New question added in 201/8/19 Q2

# 60% were satisfied with the service they received from Nottinghamshire Police; 25% were dissatisfied

Thinking back to the last occasion that you had contact with Nottinghamshire Police, overall how satisfied or dissatisfied were you with the service you received?



New question added in 2018/19 Q2