

Satisfaction performance based on dwelling burglary, vehicle crime and violent crime

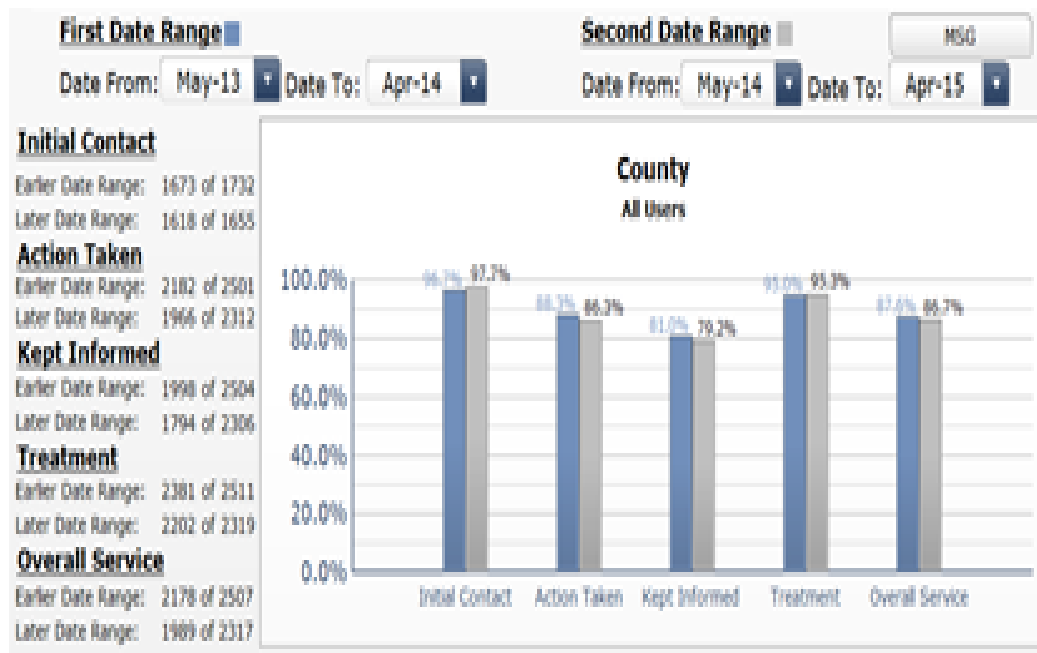


Completely, Very or Fairly Satisfied

Rank	Area	%satisfied with Follow-up
8	CITY SOUTH	75.0% (-1)
9	CITY CENTRAL	74.5% ▼ -5
10	CITY NORTH	73.8% ▼ -5
1	RUSHCLIFFE	81.4% (0)
2	BROXTOWE	80.4% (-3)
3	ASHFIELD	80.1% (3)
4	NEWARK & SHERWOOD	79.4% (-4)
5	GEDLING	78.4% (-1)
6	MANSFIELD	78.1% (-3)
7	BASSETLAW	77.9% (*-4)
	FORCE	77.1% ▼ -3

Completely or Very Satisfied

Rank	Area	%satisfied with Follow-up
8	CITY SOUTH	58.4% (-3)
9	CITY CENTRAL	58.2% ▼ -5 (below)
10	CITY NORTH	57.0% ▼ -7 (below)
1	RUSHCLIFFE	69.0% (2) (above)
2	NEWARK & SHERWOOD	67.9% (-2) (above)
3	BASSETLAW	67.3% (0) (above)
4	MANSFIELD	66.0% (2)
5	ASHFIELD	64.7% (4)
6	BROXTOWE	62.6% (*-5)
7	GEDLING	61.8% (*-7)
	FORCE	62.0% ▼ -3



Source: Satisfaction with follow-up for dwelling burglary, theft from vehicle, theft of vehicles and violent crime reported in the 12 months to April 2014 vs 12 months to April 2013

Satisfaction performance based on dwelling burglary, vehicle crime and violent crime



Completely, Very or Fairly Satisfied

Rank	Area	% satisfied with Follow-up
15	CITY SOUTH	75.0% (-1)
16	CITY CENTRAL	74.5% ▼ -8
17	CITY NORTH	73.8% ▼ -5
1	RUSHCLIFFE NORTH	83.0% (0)
2	NEWARK	82.4% (2)
3	BROXTOWE NORTH	82.2% (3)
4	ASHFIELD SOUTH	81.8% (3)
5	RUSHCLIFFE SOUTH	79.9% (0)
6	BROXTOWE SOUTH	79.3% (* -7)
7	GEDLING SOUTH	79.3% (1)
8	MANSFIELD SOUTH	79.2% (* -5)
9	ASHFIELD NORTH	79.0% (3)
10	WEST BASSETLAW	78.4% (-1)
11	GEDLING NORTH	78.0% (-3)
12	EAST BASSETLAW	77.5% (* -7)
13	SHERWOOD	77.0% ▼ -10
14	MANSFIELD NORTH	76.7% (-2)
	FORCE	77.1% ▼ -3

Completely or Very Satisfied

Rank	Area	% satisfied with Follow-up
15	CITY SOUTH	58.4% (-3)
16	CITY CENTRAL	58.2% ▼ -5 (below)
17	CITY NORTH	57.0% ▼ -7 (below)
1	ASHFIELD SOUTH	69.8% (5) (above)
2	RUSHCLIFFE NORTH	69.7% (4)
3	EAST BASSETLAW	69.4% (-4) (above)
4	NEWARK	69.3% (2)
5	RUSHCLIFFE SOUTH	69.0% (-1)
6	MANSFIELD NORTH	68.3% (0)
7	SHERWOOD	68.1% (* -7)
8	WEST BASSETLAW	65.7% (5)
9	MANSFIELD SOUTH	65.0% (4)
10	BROXTOWE NORTH	63.4% (0)
11	GEDLING SOUTH	62.8% (-7)
12	BROXTOWE SOUTH	62.2% (* -8)
13	GEDLING NORTH	61.3% (* -7)
14	ASHFIELD NORTH	60.5% (2)
	FORCE	62.0% ▼ -3

Source: Satisfaction with follow up for dwelling burglary, theft from vehicle, theft of vehicle and violent crime reported in the 12 months to April 2015 vs 12 months to April 2014

