

Appendix B

Accompanying Tables and Charts

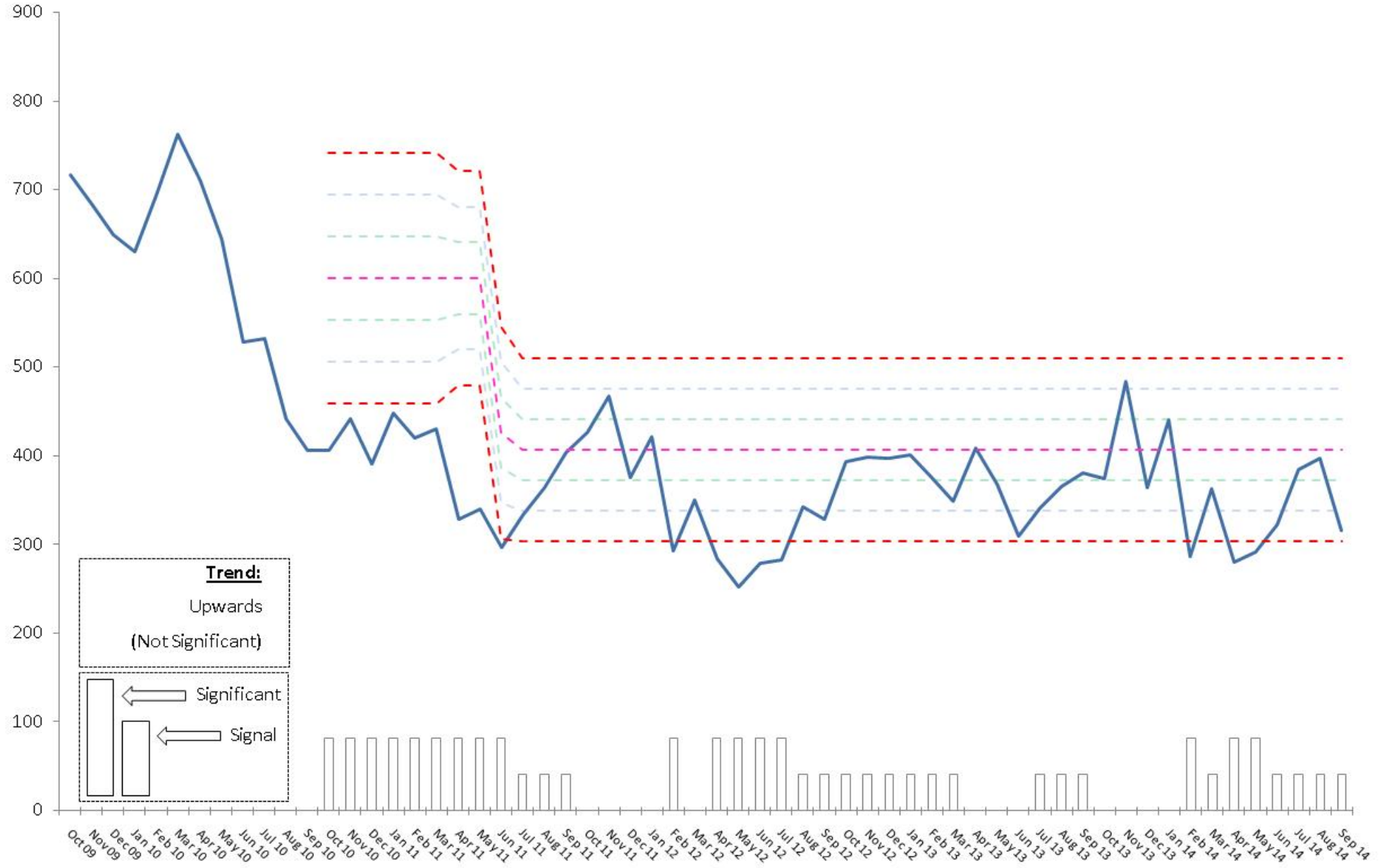
1.6 Reduction in 'All Crime' across the Force

| | Year-to-date performance | | | | Target Position | | | Month-to-date performance | | | |
|----------------------|--------------------------|---------------|---------------|-------------------|-----------------|------------------------|-----------------------------------|---------------------------|----------------|---------------|-------------------|
| | 2014/15 | 2013/14 | Volume Change | Percentage Change | Current Target | Difference from Target | Percentage Difference from Target | September 2014 | September 2013 | Volume Change | Percentage Change |
| Force | 36390 | 35,201 | 1189 | 3.4% | 35,200 | 1190 | 3.4% | 5959 | 5576 | 383 | 6.9% |
| City Division | 15816 | 15,396 | 420 | 2.7% | 15,395 | 421 | 2.7% | 2519 | 2346 | 173 | 7.4% |
| County Division | 20574 | 19,805 | 769 | 3.9% | 19,804 | 770 | 3.9% | 3440 | 3230 | 210 | 6.5% |
| County West | 7115 | 6,957 | 158 | 2.3% | 6,956 | 159 | 2.3% | 1212 | 1150 | 62 | 5.4% |
| Ashfield | 3383 | 3,548 | -165 | -4.7% | 3,547 | -164 | -4.6% | 586 | 609 | -23 | -3.8% |
| Mansfield | 3732 | 3,409 | 323 | 9.5% | 3,408 | 324 | 9.5% | 626 | 541 | 85 | 15.7% |
| County East | 6792 | 6,259 | 533 | 8.5% | 6,258 | 534 | 8.5% | 1095 | 1018 | 77 | 7.6% |
| Bassetlaw | 3874 | 3,613 | 261 | 7.2% | 3,612 | 262 | 7.3% | 657 | 573 | 84 | 14.7% |
| Newark & Sherwood | 2918 | 2,646 | 272 | 10.3% | 2,645 | 273 | 10.3% | 438 | 445 | -7 | -1.6% |
| County South | 6667 | 6,589 | 78 | 1.2% | 6,588 | 79 | 1.2% | 1133 | 1062 | 71 | 6.7% |
| Broxtowe | 2396 | 2,454 | -58 | -2.4% | 2,453 | -57 | -2.3% | 410 | 388 | 22 | 5.7% |
| Gedling | 2589 | 2,410 | 179 | 7.4% | 2,409 | 180 | 7.5% | 404 | 386 | 18 | 4.7% |
| Rushcliffe | 1682 | 1,725 | -43 | -2.5% | 1,724 | -42 | -2.4% | 319 | 288 | 31 | 10.8% |
| City Division | 15816 | 15,396 | 420 | 2.7% | 15,395 | 421 | 2.7% | 2519 | 2346 | 173 | 7.4% |
| City Central | 4447 | 4,206 | 241 | 5.7% | 4,205 | 242 | 5.8% | 737 | 571 | 166 | 29.1% |
| City Centre | 3458 | 3,665 | -207 | -5.6% | 3,664 | -206 | -5.6% | 526 | 584 | -58 | -9.9% |
| City North | 4502 | 4,472 | 30 | 0.7% | 4,471 | 31 | 0.7% | 689 | 748 | -59 | -7.9% |
| City South | 3409 | 3,053 | 356 | 11.7% | 3,052 | 357 | 11.7% | 567 | 443 | 124 | 28.0% |

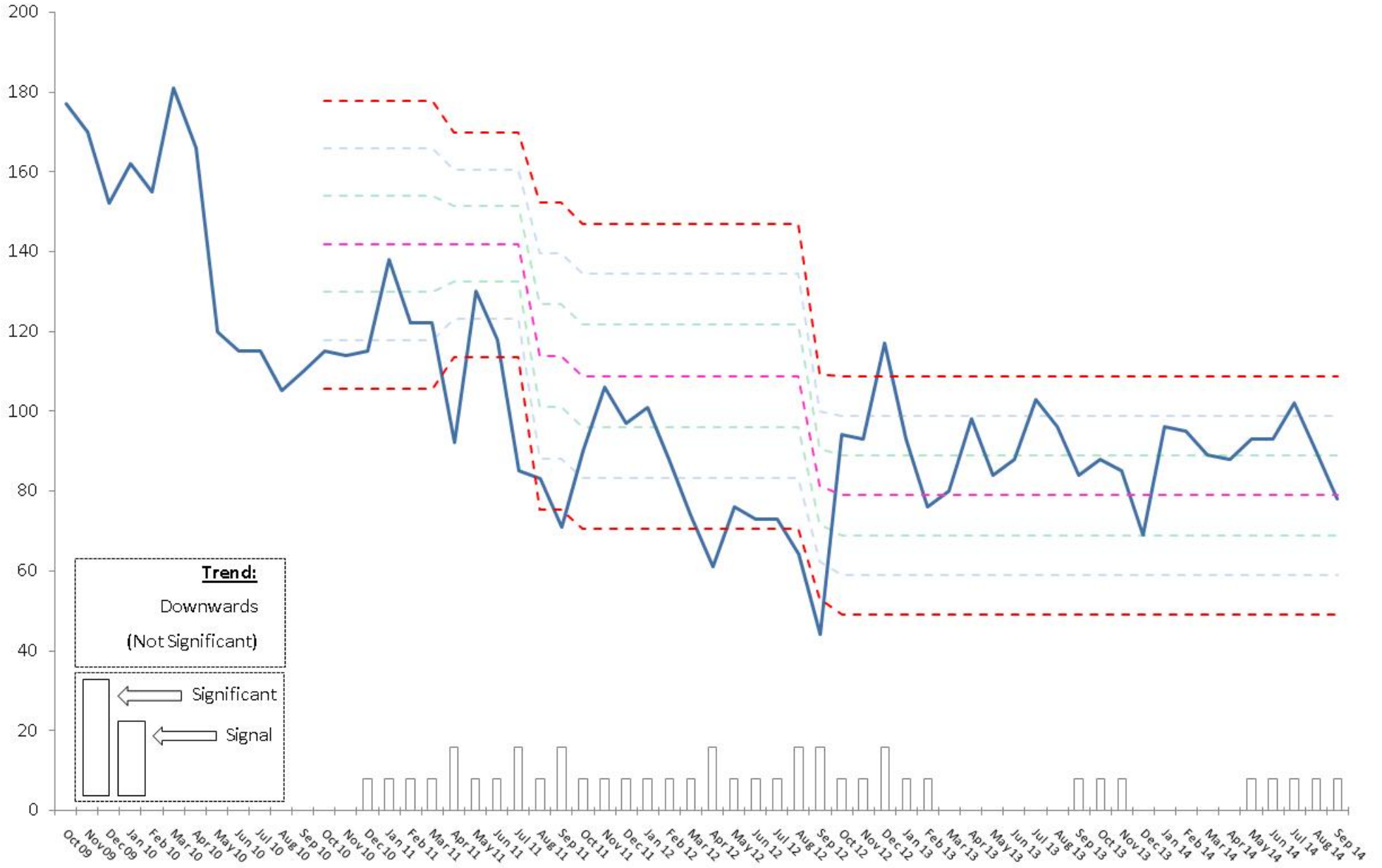
| | Year-to-date performance | | | | Target Position | | | Month-to-date performance | | | |
|--------------------------------------|--------------------------|---------------|---------------|-------------------|-----------------|------------------------|-----------------------------------|---------------------------|----------------|---------------|-------------------|
| | 2014/15 | 2013/14 | Volume Change | Percentage Change | Current Target | Difference from Target | Percentage Difference from Target | September 2014 | September 2013 | Volume Change | Percentage Change |
| All Crime | 36390 | 35,201 | 1189 | 3.38% | 35,200 | 1190 | 3.4% | 5959 | 5576 | 383 | 6.9% |
| Homicide | 5 | 6 | -1 | -16.7% | 5 | 0 | 0.0% | | 2 | -2 | -100.0% |
| Violence with injury | 4762 | 4,199 | 563 | 13.4% | 4,198 | 564 | 13.4% | 802 | 631 | 171 | 27.1% |
| Violence without injury | 3468 | 2,705 | 763 | 28.2% | 2,704 | 764 | 28.3% | 533 | 433 | 100 | 23.1% |
| Rape | 285 | 212 | 73 | 34.4% | 211 | 74 | 35.1% | 51 | 22 | 29 | 131.8% |
| Other sexual offences | 539 | 367 | 172 | 46.9% | 366 | 173 | 47.3% | 77 | 72 | 5 | 6.9% |
| Robbery of business property | 44 | 59 | -15 | -25.4% | 58 | -14 | -24.1% | 7 | 8 | -1 | -12.5% |
| Robbery of personal property | 500 | 494 | 6 | 1.2% | 493 | 7 | 1.4% | 71 | 76 | -5 | -6.6% |
| Burglary dwelling | 1989 | 2,172 | -183 | -8.4% | 2,171 | -182 | -8.4% | 315 | 381 | -66 | -17.3% |
| Burglary other | 2337 | 2,288 | 49 | 2.1% | 2,287 | 50 | 2.2% | 356 | 430 | -74 | -17.2% |
| Theft of motor vehicle | 543 | 732 | -189 | -25.8% | 731 | -188 | -25.7% | 100 | 119 | -19 | -16.0% |
| Theft from motor vehicle | 2411 | 2,489 | -78 | -3.1% | 2,488 | -77 | -3.1% | 451 | 432 | 19 | 4.4% |
| Vehicle interference | 408 | 154 | 254 | 164.9% | 153 | 255 | 166.7% | 78 | 27 | 51 | 188.9% |
| Theft from person | 504 | 807 | -303 | -37.5% | 806 | -302 | -37.5% | 83 | 141 | -58 | -41.1% |
| Bicycle theft | 1224 | 1,213 | 11 | 0.9% | 1,212 | 12 | 1.0% | 260 | 178 | 82 | 46.1% |
| Shoplifting | 3825 | 3,864 | -39 | -1.0% | 3,863 | -38 | -1.0% | 594 | 576 | 18 | 3.1% |
| All other theft offences | 4452 | 4,771 | -319 | -6.7% | 4,770 | -318 | -6.7% | 753 | 710 | 43 | 6.1% |
| Criminal damage | 4976 | 4,986 | -10 | -0.2% | 4,985 | -9 | -0.2% | 794 | 738 | 56 | 7.6% |
| Arson | 233 | 225 | 8 | 3.6% | 224 | 9 | 4.0% | 55 | 30 | 25 | 83.3% |
| Victim-Based Crime | 32505 | 31,743 | 762 | 2.4% | 31,742 | 763 | 2.4% | 5380 | 5006 | 374 | 7.5% |
| Trafficking in drugs | 350 | 339 | 11 | 3.2% | 338 | 12 | 3.6% | 60 | 52 | 8 | 15.4% |
| Possession of drugs | 1444 | 1,515 | -71 | -4.7% | 1,514 | -70 | -4.6% | 181 | 246 | -65 | -26.4% |
| Possession of weapons offences | 289 | 287 | 2 | 0.7% | 286 | 3 | 1.0% | 51 | 50 | 1 | 2.0% |
| Public order offences | 1293 | 917 | 376 | 41.0% | 916 | 377 | 41.2% | 204 | 161 | 43 | 26.7% |
| Miscellaneous crimes against society | 509 | 400 | 109 | 27.3% | 399 | 110 | 27.6% | 83 | 61 | 22 | 36.1% |
| Other crimes against society | 3885 | 3,458 | 427 | 12.3% | 3,457 | 428 | 12.4% | 579 | 570 | 9 | 1.6% |

| Priority Area | Year-to-Date Performance | | | | Month-to-Date Performance | | | |
|-------------------------------|--------------------------|--------------|-------------------|-----------------------|---------------------------|----------------|-------------------|-----------------------|
| | 2014/15 | 2013/14 | Volume Difference | Percentage Difference | September 2014 | September 2013 | Volume Difference | Percentage Difference |
| Nottingham City | | | | | | | | |
| Arboretum | 780 | 728 | 52 | 7% | 138 | 99 | 39 | 39% |
| Aspley | 753 | 830 | -77 | -9% | 120 | 136 | -16 | -12% |
| Bridge | 581 | 439 | 142 | 32% | 106 | 65 | 41 | 63% |
| Bulwell | 989 | 973 | 16 | 2% | 148 | 160 | -12 | -8% |
| St Ann's | 674 | 642 | 32 | 5% | 105 | 103 | 2 | 2% |
| Total | 3,777 | 3,612 | 165 | 5% | 617 | 563 | 54 | 10% |
| Nottinghamshire County | | | | | | | | |
| Carr Bank | 149 | 168 | -19 | -11% | 29 | 32 | -3 | -9% |
| Oak Tree | 174 | 162 | 12 | 7% | 17 | 20 | -3 | -15% |
| Portland | 585 | 459 | 126 | 27% | 100 | 94 | 6 | 6% |
| Woodlands | 466 | 410 | 56 | 14% | 74 | 66 | 8 | 12% |
| Hucknall East | 296 | 323 | -27 | -8% | 42 | 51 | -9 | -18% |
| Kirkby East | 317 | 314 | 3 | 1% | 59 | 52 | 7 | 13% |
| Sutton Central | 390 | 378 | 12 | 3% | 72 | 59 | 13 | 22% |
| Sutton East | 198 | 210 | -12 | -6% | 21 | 38 | -17 | -45% |
| Sutton In Ashfield North | 308 | 386 | -78 | -20% | 51 | 56 | -5 | -9% |
| Bridge | 243 | 276 | -33 | -12% | 51 | 47 | 4 | 9% |
| Castle | 520 | 438 | 82 | 19% | 77 | 78 | -1 | -1% |
| Worksop North West | 452 | 379 | 73 | 19% | 79 | 76 | 3 | 4% |
| Worksop South | 324 | 357 | -33 | -9% | 53 | 58 | -5 | -9% |
| Eastwood South | 390 | 391 | -1 | 0% | 63 | 63 | 0 | 0% |
| Netherfield And Colwick | 300 | 286 | 14 | 5% | 52 | 53 | -1 | -2% |
| Total | 5,112 | 4,937 | 175 | 4% | 840 | 843 | -3 | 0% |
| Discretionary Areas | | | | | | | | |
| Ladybrook | 123 | 154 | -31 | -20% | 25 | 24 | 1 | 4% |
| Worksop South East | 650 | 588 | 62 | 11% | 88 | 117 | -29 | -25% |
| Trent Bridge | 213 | 239 | -26 | -11% | 45 | 34 | 11 | 32% |
| Total | 986 | 981 | 5 | 1% | 158 | 175 | -17 | -10% |

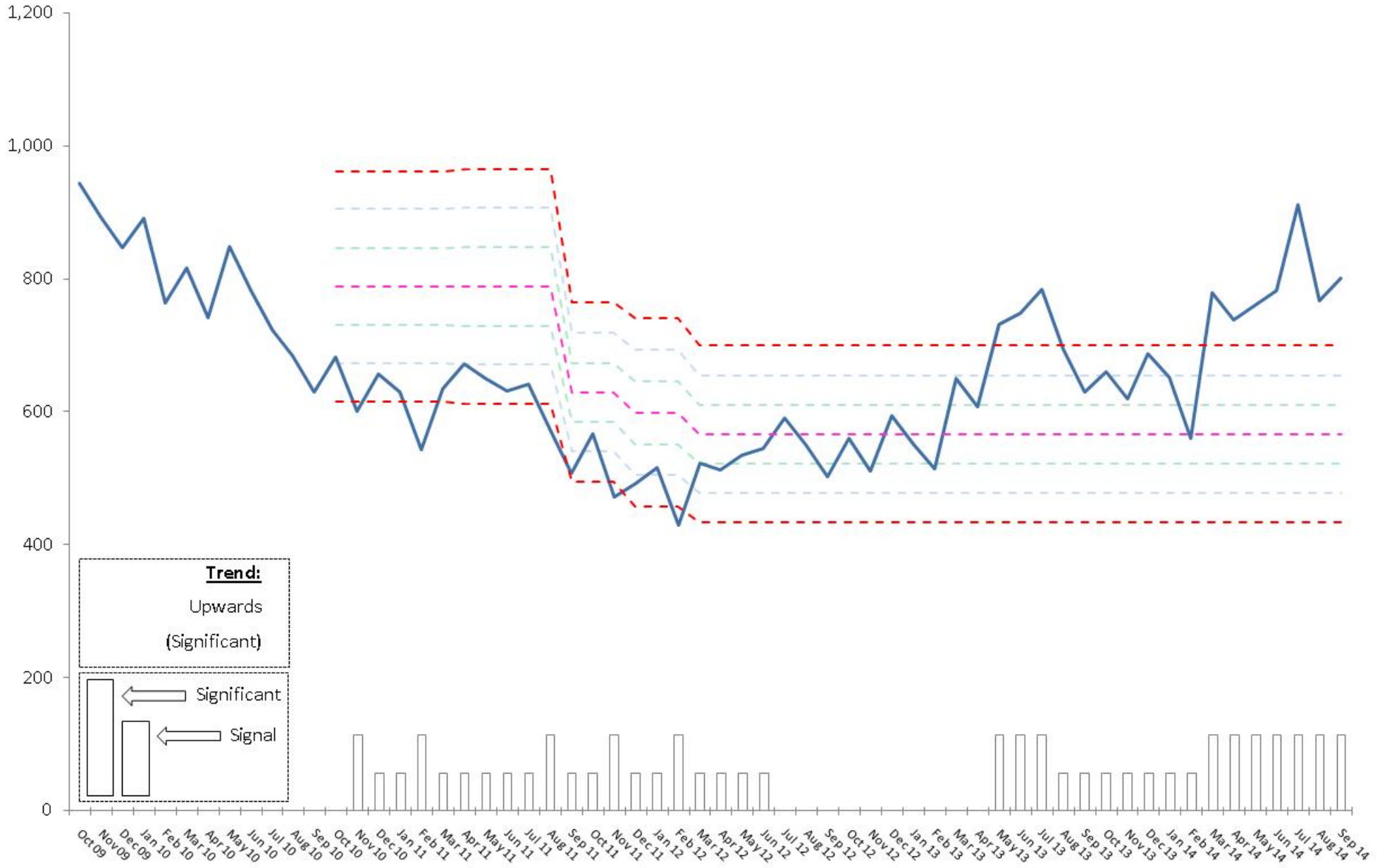
1.6 Burglary Dwelling performance over-time



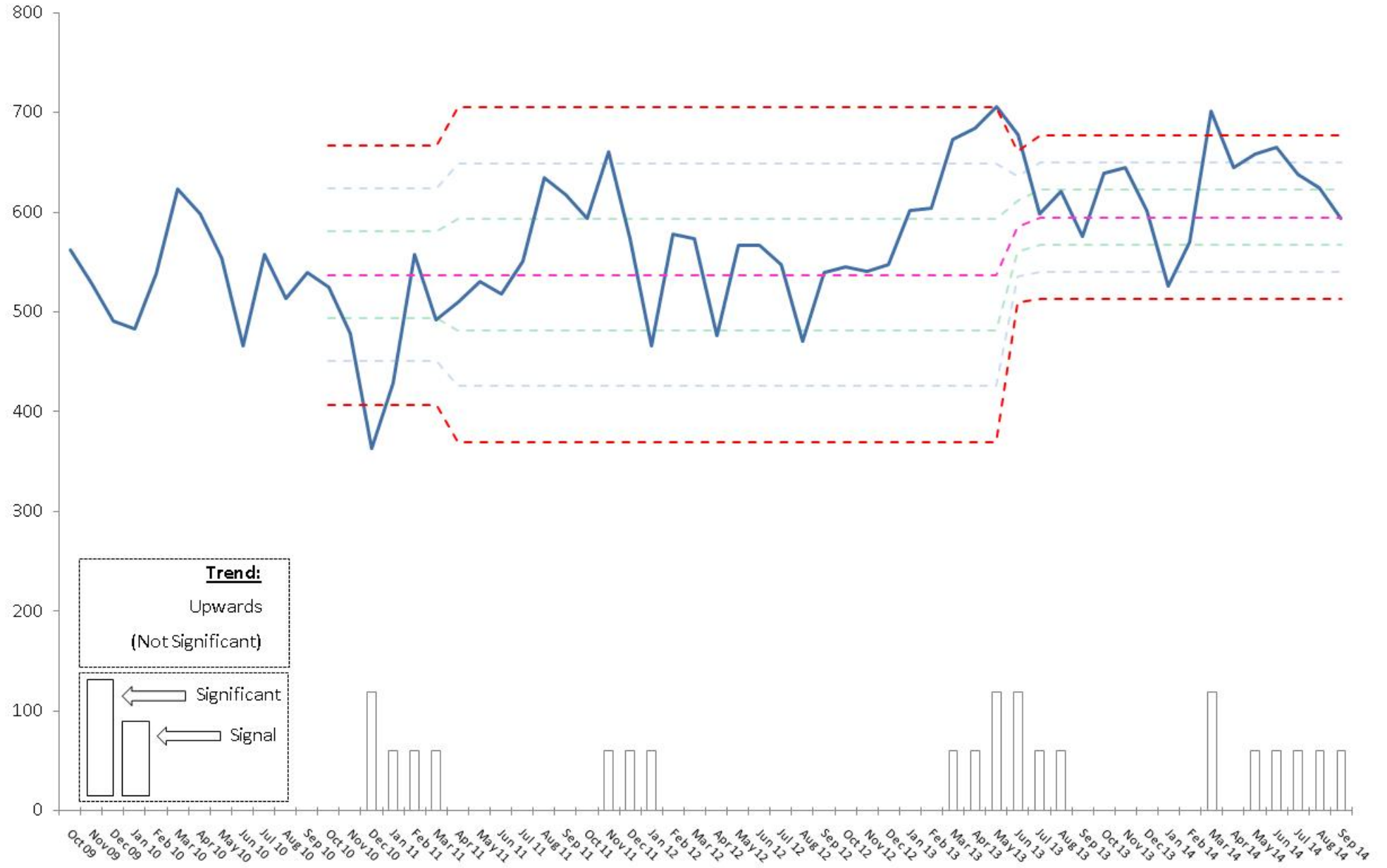
1.6 Robbery performance over-time



1.6 Violence with Injury performance over-time



1.6 Shop Theft performance over-time



1.7 Reduction in Anti-Social Behaviour (ASB) incidents across the Force

| | Year-to-date performance | | | | Target Position | | | Month-to-date performance | | | |
|----------------------|--------------------------|---------------|---------------|-------------------|-----------------|------------------------|-----------------------------------|---------------------------|----------------|---------------|-------------------|
| | 2014/15 | 2013/14 | Volume Change | Percentage Change | Current Target | Difference from Target | Percentage Difference from Target | September 2014 | September 2013 | Volume Change | Percentage Change |
| Force | 21,572 | 19,732 | 1,840 | 9.3% | 18,153 | 3418.56 | 15.8% | 3413 | 3022 | 391 | 12.9% |
| City Division | 10,250 | 8,489 | 1,761 | 20.7% | 7,810 | 2440.12 | 23.8% | 1629 | 1343 | 286 | 21.3% |
| County Division | 11,322 | 11,243 | 79 | 0.7% | 10,344 | 978.44 | 8.6% | 1784 | 1679 | 105 | 6.3% |
| County West | 4,260 | 4,207 | 53 | 1.3% | 3,870 | 389.56 | 9.1% | 620 | 679 | -59 | -8.7% |
| Ashfield | 2,135 | 2,097 | 38 | 1.8% | 1,929 | 205.76 | 9.6% | 294 | 337 | -43 | -12.8% |
| Mansfield | 2,125 | 2,110 | 15 | 0.7% | 1,941 | 183.8 | 8.6% | 326 | 342 | -16 | -4.7% |
| County East | 3,483 | 3,604 | -121 | -3.4% | 3,316 | 167.32 | 4.8% | 599 | 498 | 101 | 20.3% |
| Bassetlaw | 1,839 | 1,958 | -119 | -6.1% | 1,801 | 37.64 | 2.0% | 316 | 286 | 30 | 10.5% |
| Newark & Sherwood | 1,644 | 1,646 | -2 | -0.1% | 1,514 | 129.68 | 7.9% | 283 | 212 | 71 | 33.5% |
| County South | 3,579 | 3,432 | 147 | 4.3% | 3,157 | 421.56 | 11.8% | 565 | 502 | 63 | 12.5% |
| Broxtowe | 1,333 | 1,303 | 30 | 2.3% | 1,199 | 134.24 | 10.1% | 184 | 164 | 20 | 12.2% |
| Gedling | 1,363 | 1,259 | 104 | 8.3% | 1,158 | 204.72 | 15.0% | 237 | 206 | 31 | 15.0% |
| Rushcliffe | 883 | 870 | 13 | 1.5% | 800 | 82.6 | 9.4% | 144 | 132 | 12 | 9.1% |
| City Division | 10,250 | 8,489 | 1,761 | 20.7% | 7,810 | 2440.12 | 23.8% | 1629 | 1343 | 286 | 21.3% |
| City Central | 2,816 | 2,352 | 464 | 19.7% | 2,164 | 652.16 | 23.2% | 466 | 396 | 70 | 17.7% |
| City Centre | 1,347 | 1,079 | 268 | 24.8% | 993 | 354.32 | 26.3% | 228 | 190 | 38 | 20.0% |
| City North | 3,387 | 2,831 | 556 | 19.6% | 2,605 | 782.48 | 23.1% | 477 | 432 | 45 | 10.4% |
| City South | 2,700 | 2,227 | 473 | 21.2% | 2,049 | 651.16 | 24.1% | 458 | 325 | 133 | 40.9% |

| | Year-to-date performance | | | | Target Position | | | Month-to-date performance | | | |
|-------------------|--------------------------|---------|---------------|-------------------|-----------------|------------------------|-----------------------------------|---------------------------|----------------|---------------|-------------------|
| | 2014/15 | 2013/14 | Volume Change | Percentage Change | Current Target | Difference from Target | Percentage Difference from Target | September 2014 | September 2013 | Volume Change | Percentage Change |
| ASB Nuisance | 16,277 | 14,371 | 1,906 | 13.3% | 13,221 | 3055.68 | 18.8% | 2572 | 2298 | 274 | 11.9% |
| ASB Personal | 3,588 | 3,638 | -50 | -1.4% | 3,347 | 241.04 | 6.7% | 580 | 503 | 77 | 15.3% |
| ASB Environmental | 1,707 | 1,723 | -16 | -0.9% | 1,585 | 121.84 | 7.1% | 261 | 221 | 40 | 18.1% |

1.8 An increase in the detection rate for Victim-Based Crime

| | Year-to-date performance | | | Target Position | | Month-to-date performance | | |
|----------------------|--------------------------|--------------|--------------|-----------------|-----------------------------------|---------------------------|----------------|--------------|
| | 2014/15 | 2013/14 | Change | Current Target | Percentage Difference from Target | September 2014 | September 2013 | Change |
| Force | 24.6% | 27.5% | -2.8% | 27.5% | -2.9% | 20.3% | 28.0% | -7.8% |
| City Division | 23.6% | 27.4% | -3.8% | 27.4% | -3.8% | 19.4% | 27.7% | -8.4% |
| County Division | 25.4% | 27.5% | -2.1% | 27.5% | -2.1% | 20.9% | 28.3% | -7.4% |
| County West | 27.6% | 28.1% | -0.5% | 28.1% | -0.5% | 23.1% | 28.0% | -4.9% |
| Ashfield | 23.8% | 23.4% | 0.5% | 23.4% | 0.4% | 17.2% | 23.4% | -6.3% |
| Mansfield | 31.2% | 33.3% | -2.1% | 33.3% | -2.1% | 29.2% | 33.5% | -4.3% |
| County East | 25.7% | 28.5% | -2.7% | 28.5% | -2.8% | 19.1% | 28.7% | -9.6% |
| Bassetlaw | 25.4% | 26.6% | -1.2% | 26.6% | -1.2% | 18.3% | 28.4% | -10.1% |
| Newark & Sherwood | 26.2% | 31.1% | -4.8% | 31.1% | -4.8% | 20.2% | 29.1% | -8.9% |
| County South | 22.7% | 25.9% | -3.2% | 25.9% | -3.2% | 20.3% | 28.1% | -7.8% |
| Broxtowe | 22.8% | 22.6% | 0.2% | 22.7% | 0.1% | 15.1% | 24.8% | -9.7% |
| Gedling | 24.4% | 31.3% | -6.9% | 31.4% | -6.9% | 25.1% | 37.9% | -12.8% |
| Rushcliffe | 20.0% | 22.9% | -2.9% | 22.9% | -2.9% | 21.2% | 19.9% | 1.3% |
| City Division | 23.6% | 27.4% | -3.8% | 27.4% | -3.8% | 19.4% | 27.7% | -8.4% |
| City Central | 19.3% | 23.4% | -4.1% | 23.4% | -4.1% | 14.1% | 25.0% | -11.0% |
| City Centre | 32.4% | 33.7% | -1.3% | 33.7% | -1.3% | 24.8% | 34.2% | -9.4% |
| City North | 22.8% | 26.7% | -3.9% | 26.7% | -3.9% | 22.8% | 25.6% | -2.8% |
| City South | 21.6% | 26.4% | -4.9% | 26.4% | -4.9% | 17.2% | 26.2% | -8.9% |

| | Year-to-date performance | | | Target Position | | Month-to-date performance | | |
|------------------------------|--------------------------|--------------|-------------------|-----------------|-----------------------------------|---------------------------|----------------|--------------|
| | 2014/15 | 2013/14 | Percentage Change | Current Target | Percentage Difference from Target | September 2014 | September 2013 | Change |
| Homicide | 60.0% | 83.3% | -23.3% | 83.3% | -23.3% | | 50.0% | -50.0% |
| Violence with injury | 42.4% | 49.2% | -6.8% | 49.2% | -6.8% | 37.0% | 49.8% | -12.7% |
| Violence without injury | 39.9% | 56.0% | -16.1% | 56.0% | -16.1% | 33.8% | 53.8% | -20.0% |
| Rape | 13.0% | 17.0% | -4.0% | 17.0% | -4.0% | 5.9% | 9.1% | -3.2% |
| Other sexual offences | 21.9% | 25.3% | -3.4% | 25.4% | -3.5% | 16.9% | 29.2% | -12.3% |
| Robbery of business property | 25.0% | 25.4% | -0.4% | 25.4% | -0.4% | 28.6% | 25.0% | 3.6% |
| Robbery of personal property | 24.0% | 24.1% | -0.1% | 24.1% | -0.1% | 23.9% | 27.6% | -3.7% |
| Burglary dwelling | 11.9% | 12.5% | -0.6% | 12.5% | -0.6% | 17.1% | 16.3% | 0.9% |
| Burglary other | 7.2% | 7.5% | -0.3% | 7.5% | -0.3% | 7.0% | 7.0% | 0.0% |
| Theft of motor vehicle | 18.0% | 18.4% | -0.4% | 18.5% | -0.4% | 14.0% | 16.0% | -2.0% |
| Theft from motor vehicle | 5.6% | 6.3% | -0.7% | 6.4% | -0.8% | 2.2% | 2.8% | -0.6% |
| Vehicle interference | 5.6% | 4.5% | 1.1% | 4.6% | 1.1% | 3.8% | 7.4% | -3.6% |
| Theft from person | 6.5% | 4.3% | 2.2% | 4.3% | 2.2% | 2.4% | 5.0% | -2.6% |
| Bicycle theft | 5.6% | 6.4% | -0.8% | 6.4% | -0.8% | 3.1% | 11.2% | -8.2% |
| Shoplifting | 56.0% | 59.2% | -3.2% | 59.2% | -3.2% | 48.3% | 65.5% | -17.1% |
| All other theft offences | 9.9% | 12.5% | -2.6% | 12.5% | -2.6% | 6.9% | 13.5% | -6.6% |
| Criminal damage | 18.8% | 22.1% | -3.3% | 22.1% | -3.3% | 15.0% | 24.4% | -9.4% |
| Arson | 11.6% | 12.4% | -0.9% | 12.5% | -0.9% | 7.3% | 16.7% | -9.4% |
| Victim-Based Crime | 24.6% | 27.5% | -2.8% | 27.5% | -2.9% | 20.3% | 28.0% | -7.8% |

1.8 Use of Community Resolutions

| | 2014/15 | % Prop of total | 2013/14 | % Prop of total |
|-----------------------------|--------------|-----------------|--------------|-----------------|
| Cautions | 1185 | 11.1% | 2531 | 21.7% |
| Charge / Summons | 6827 | 64.1% | 5925 | 50.9% |
| Community Resolution | 1890 | 17.7% | 2075 | 17.8% |
| Other | 504 | 4.7% | 674 | 5.8% |
| Penalty Notice for Crime | 105 | 1.0% | 126 | 1.1% |
| TIC not previously recorded | 7 | 0.1% | 14 | 0.1% |
| TIC previously recorded | 139 | 1.3% | 294 | 2.5% |
| Total | 10657 | 100.0% | 11639 | 100.0% |

1.8 Breakdown of Outcome Codes

| | Year-to-date performance 2014/15 |
|-------------------------------------------------------------------------------|-------------------------------------|
| 01. Charged/Summons | 6827 |
| 02. Caution - Youths | 159 |
| 03. Caution - Adults | 1026 |
| 04. Taken Into Consideration | 146 |
| 05. Offender Has Died | 5 |
| 06. Penalty Notices For Disorder | 105 |
| 07. Cannabis Warning | 499 |
| 08. Community Resolution | 1890 |
| 09. Prosecution Not In The Public Interest (CPS) | 495 |
| 10. Action Not In The Public Interest (Police) | 909 |
| 11. Named Suspect below the age of criminal responsibility | 43 |
| 12. Named suspect too ill (physical or mental health) to prosecute | 76 |
| 13. Named suspect but victim/key witness is dead or too ill | 19 |
| 14. Victim declines/unable to ID suspect | 527 |
| 15. Victim supports but evidential difficulties prevent further action | 2391 |
| 16. Victim does not support/withdraws support | 2452 |
| 17. Prosecution time limit expired | 32 |
| 18. Investigation Complete: No suspect identified | 17890 |
| Total | 35491 |

1.9 The number of alcohol-related crimes

| | Year-to-date performance | | | | Month-to-date performance | | | |
|-----------------------------|--------------------------|---------|---------------|-------------------|---------------------------|----------------|---------------|-------------------|
| | 2014/15 | 2013/14 | Volume Change | Percentage Change | September 2014 | September 2013 | Volume Change | Percentage Change |
| All Crime | 36,390 | 35,201 | 1,189 | 3.4% | 5,959 | 5,576 | 383 | 6.9% |
| Alcohol-related | 4,814 | 4,857 | -43 | -0.9% | 710 | 748 | -38 | -5.1% |
| % Alcohol-related | 13.2% | 13.8% | | -0.6% | 11.9% | 13.4% | | -1.5% |
| Victim-Based Crime | 32,505 | 31,743 | 762 | 2.4% | 5,380 | 5,006 | 374 | 7.5% |
| Alcohol-related | 4,258 | 4,300 | -42 | -1.0% | 626 | 654 | -28 | -4.3% |
| % Alcohol-related | 13.1% | 13.5% | | -0.4% | 11.6% | 13.1% | | -1.5% |
| Violence Against the Person | 8,235 | 6,910 | 1,325 | 19.2% | 1,335 | 1,066 | 269 | 25.2% |
| Alcohol-related | 1,927 | 1,766 | 161 | 9.1% | 294 | 265 | 29 | 10.9% |
| % Alcohol-related | 23.4% | 25.6% | | -2.2% | 22.0% | 24.9% | | -2.9% |
| Anti-Social Behaviour | 21,572 | 19,732 | 1,840 | 9.3% | 3,413 | 3,022 | 391 | 12.9% |
| Alcohol-related | 2,938 | 2,611 | 327 | 12.5% | 467 | 420 | 47 | 11.2% |
| % Alcohol-related | 13.6% | 13.2% | | 0.4% | 13.7% | 13.9% | | -0.2% |

1.11 To monitor the number of production and supply of drugs

| | Year-to-date performance | | | | Taret Position | | | Month-to-date performance | | | |
|------------|--------------------------|---------|---------------|-------------------|----------------|------------------------|-----------------------------------|---------------------------|----------------|---------------|-------------------|
| | 2014/15 | 2013/14 | Volume Change | Percentage Change | Current Target | Difference from Target | Percentage Difference from Target | September 2014 | September 2013 | Volume Change | Percentage Change |
| Possession | 1444 | 1,515 | -71 | -4.7% | 1,514 | -70 | -4.6% | 181 | 246 | -65 | -26.4% |
| Production | 189 | 217 | -28 | -12.9% | 216 | -27 | -12.5% | 40 | 34 | 6 | 17.6% |
| Supply | 161 | 122 | 39 | 32.0% | 121 | 40 | 33.1% | 20 | 18 | 2 | 11.1% |
| Sum: | 1794 | 1,854 | -60 | -3.2% | 1,851 | -57 | -3.2% | 241 | 298 | -57 | -19.1% |

3.4 Percentage reduction of people that have been a repeat victim within the previous 12 months

| Domestic Violence Repeat Victims | Year-to-date performance | | | |
|-------------------------------------|--------------------------|-------------|---------------|-------------------|
| | 2014/15 | 2013/14 | Volume Change | Percentage Change |
| City | 420 | 422 | -2 | -0.5% |
| County | 591 | 586 | 5 | 0.9% |
| Force | 1011 | 1008 | 3 | 0.3% |

Hate Crime

Year-to-date performance

| Repeat Victims | 2014/15 | 2013/14 | Volume Change | Percentage Change |
|----------------|-----------|-----------|---------------|-------------------|
| City | 26 | 20 | 6 | 30.0% |
| County | 19 | 19 | 0 | 0.0% |
| Force | 45 | 39 | 6 | 15.4% |

Total Repeat Volume

Year-to-date performance

| | 2014/15 | 2013/14 | Volume Change | Percentage Change |
|--------------|-------------|-------------|---------------|-------------------|
| City | 446 | 442 | 4 | 0.9% |
| County | 610 | 605 | 5 | 0.8% |
| Force | 1056 | 1047 | 9 | 0.9% |

Domestic Violence

Year-to-date performance

| | 2014/15 | 2013/14 | Volume Change | Percentage Change |
|--------------|---------|---------|---------------|-------------------|
| City Central | 109 | 100 | 9 | 9.0% |
| City Centre | 9 | 6 | 3 | 50.0% |
| City North | 190 | 192 | -2 | -1.0% |
| City South | 112 | 124 | -12 | -9.7% |

Domestic Violence

Year-to-date performance

| | 2014/15 | 2013/14 | Volume Change | Percentage Change |
|-----------|---------|---------|---------------|-------------------|
| Ashfield | 105 | 118 | -13 | -11.0% |
| Bassetlaw | 93 | 78 | 15 | 19.2% |
| Broxtowe | 71 | 63 | 8 | 12.7% |
| Gedling | 95 | 92 | 3 | 3.3% |
| Mansfield | 123 | 119 | 4 | 3.4% |

| 2013/14 | | | | |
|--------------------------|--------------------------------------------|------------------------------------------------------------|--------------------------|--------------------------------------------|
| Domestic Violence Crimes | Domestic Violence crimes which are repeats | % Proportion of Domestic Violence crimes which are repeats | Domestic Violence Crimes | Domestic Violence crimes which are repeats |
| City | 1,276 | 485 | 38.0% | 1,244 |
| County | 1,674 | 658 | 39.3% | 1,920 |
| Force | 2,950 | 1,143 | 38.7% | 3,164 |

* Includes domestic abuse incidents to determine repeat victimisation

| 2013/14 | | | | |
|--------------------------|--------------------------------------------|------------------------------------------------------------|--------------------------|--------------------------------------------|
| Domestic Violence Crimes | Domestic Violence crimes which are repeats | % Proportion of Domestic Violence crimes which are repeats | Domestic Violence Crimes | Domestic Violence crimes which are repeats |
| City | 1,276 | 238 | 18.7% | 1,244 |
| County | 1,674 | 311 | 18.6% | 1,920 |
| Force | 2,950 | 549 | 18.6% | 3,164 |

* Only includes notifiable domestic abuse offences to determine repeat victimisation

Anti-Social Behaviour

Year-to-date performance

| | 2014/15 | 2013/14 | Volume Change | Percentage Change |
|--------------|--------------|--------------|---------------|-------------------|
| City | 2,072 | 1,686 | 386 | 22.9% |
| County | 2,107 | 2,090 | 17 | 0.8% |
| Force | 4,179 | 3,776 | 403 | 10.7% |

Anti-Social Behaviour

Year-to-date performance

| | 2014/15 | 2013/14 | Volume Change | Percentage Change |
|---------------|--------------|--------------|---------------|-------------------|
| City | 2,072 | 1,686 | 386 | 22.9% |
| City Central | 569 | 485 | 84 | 17.3% |
| City Centre | 275 | 189 | 86 | 45.5% |
| City North | 680 | 562 | 118 | 21.0% |
| City South | 548 | 450 | 98 | 21.8% |
| County | 2,106 | 2,089 | 17 | 0.8% |
| Ashfield | 425 | 419 | 6 | 1.4% |
| Bassetlaw | 336 | 339 | -3 | -0.9% |
| Broxtowe | 235 | 247 | -12 | -4.9% |
| Gedling | 216 | 206 | 10 | 4.9% |
| Mansfield | 438 | 437 | 1 | 0.2% |
| Newark & She | 291 | 301 | -10 | -3.3% |

3.5 Public confidence in reporting offences to the police

To monitor the number of Serious Sexual Offences

| Area | Offence Type | Year-to-Date Performance | | | | Month-to-Date Performance | | | |
|------------------------|-------------------------------|--------------------------|---------|-------------------|-----------------------|---------------------------|----------------|-------------------|-----------------------|
| | | 2014/15 | 2013/14 | Volume Difference | Percentage Difference | September 2014 | September 2013 | Volume Difference | Percentage Difference |
| Force | Rape | 285 | 212 | 73 | 34% | 51 | 22 | 29 | 132% |
| | Other Sexual Offences | 367 | 252 | 115 | 46% | 56 | 52 | 4 | 8% |
| | Serious Sexual Offences Total | 652 | 464 | 188 | 41% | 107 | 74 | 33 | 45% |
| Nottingham City | Rape | 131 | 90 | 41 | 46% | 27 | 10 | 17 | 170% |
| | Other Sexual Offences | 161 | 110 | 51 | 46% | 27 | 22 | 5 | 23% |
| | Serious Sexual Offences Total | 292 | 200 | 92 | 46% | 54 | 32 | 22 | 69% |
| Nottinghamshire County | Rape | 154 | 122 | 32 | 26% | 24 | 12 | 12 | 100% |
| | Other Sexual Offences | 206 | 142 | 64 | 45% | 29 | 30 | -1 | -3% |
| | Serious Sexual Offences Total | 360 | 264 | 96 | 36% | 53 | 42 | 11 | 26% |
| Ashfield | Rape | 27 | 18 | 9 | 50% | 5 | 1 | 4 | 400% |
| | Other Sexual Offences | 32 | 27 | 5 | 19% | 5 | 1 | 4 | 400% |
| | Serious Sexual Offences Total | 59 | 45 | 14 | 31% | 10 | 2 | 8 | 400% |
| Bassetlaw | Rape | 27 | 16 | 11 | 69% | 5 | 2 | 3 | 150% |
| | Other Sexual Offences | 33 | 20 | 13 | 65% | 5 | 5 | 0 | 0% |
| | Serious Sexual Offences Total | 60 | 36 | 24 | 67% | 10 | 7 | 3 | 43% |
| Broxtowe | Rape | 20 | 20 | 0 | 0% | 6 | 1 | 5 | 500% |
| | Other Sexual Offences | 24 | 16 | 8 | 50% | 5 | 6 | -1 | -17% |
| | Serious Sexual Offences Total | 44 | 36 | 8 | 22% | 11 | 7 | 4 | 57% |
| City | Rape | 131 | 90 | 41 | 46% | 27 | 10 | 17 | 170% |
| | Other Sexual Offences | 161 | 110 | 51 | 46% | 27 | 22 | 5 | 23% |
| | Serious Sexual Offences Total | 292 | 200 | 92 | 46% | 54 | 32 | 22 | 69% |
| Gedling | Rape | 21 | 8 | 13 | 163% | 1 | 0 | 1 | #DIV/0 |
| | Other Sexual Offences | 31 | 13 | 18 | 138% | 2 | 2 | 0 | 0% |
| | Serious Sexual Offences Total | 52 | 21 | 31 | 148% | 3 | 2 | 1 | 50% |
| Mansfield | Rape | 35 | 31 | 4 | 13% | 7 | 4 | 3 | 75% |
| | Other Sexual Offences | 42 | 29 | 13 | 45% | 2 | 5 | -3 | -60% |
| | Serious Sexual Offences Total | 77 | 60 | 17 | 28% | 9 | 9 | 0 | 0% |
| Newark & Sherwood | Rape | 15 | 20 | -5 | -25% | 0 | 2 | -2 | -100% |
| | Other Sexual Offences | 29 | 31 | -2 | -6% | 9 | 7 | 2 | 29% |
| | Serious Sexual Offences Total | 44 | 51 | -7 | -14% | 9 | 9 | 0 | 0% |
| Rushcliffe | Rape | 9 | 9 | 0 | 0% | 0 | 2 | -2 | -100% |
| | Other Sexual Offences | 15 | 6 | 9 | 150% | 1 | 4 | -3 | -75% |
| | Serious Sexual Offences Total | 24 | 15 | 9 | 60% | 1 | 6 | -5 | -83% |

To monitor the number of Domestic Violence incidents and crimes

| Area | Offence Type | Year-to-Date Performance | | | | Month-to-Date Performance | | | |
|--------------|----------------------|--------------------------|---------|-------------------|-----------------------|---------------------------|----------------|-------------------|-----------------------|
| | | 2014/15 | 2013/14 | Volume Difference | Percentage Difference | September 2014 | September 2013 | Volume Difference | Percentage Difference |
| Force | Domestic Crimes | 3169 | 2948 | 221 | 7% | 507 | 473 | 34 | 7% |
| | Domestic Incidents | 6394 | 8526 | -2132 | -25% | 1248 | 1244 | 4 | 0% |
| | Domestic Abuse Total | 9563 | 11474 | -1911 | -17% | 1755 | 1717 | 38 | 2% |

| Area | Offence Type | Year-to-Date Performance | | | | Month-to-Date Performance | | | |
|-------------------------------|----------------------|--------------------------|---------|-------------------|-----------------------|---------------------------|----------------|-------------------|-----------------------|
| | | 2014/15 | 2013/14 | Volume Difference | Percentage Difference | September 2014 | September 2013 | Volume Difference | Percentage Difference |
| Nottingham City | Domestic Crimes | 1273 | 1304 | -31 | -2% | 198 | 188 | 10 | 5% |
| | Domestic Incidents | 2666 | 3447 | -781 | -23% | 523 | 547 | -24 | -4% |
| | Domestic Abuse Total | 3939 | 4751 | -812 | -17% | 721 | 735 | -14 | -2% |
| Nottinghamshire County | Domestic Crimes | 1896 | 1644 | 252 | 15% | 309 | 285 | 24 | 8% |
| | Domestic Incidents | 3728 | 5079 | -1351 | -27% | 725 | 697 | 28 | 4% |
| | Domestic Abuse Total | 5624 | 6723 | -1099 | -16% | 1034 | 982 | 52 | 5% |

| Area | Offence Type | Year-to-Date Performance | | | | Month-to-Date Performance | | | |
|------------------------------|----------------------|--------------------------|---------|-------------------|-----------------------|---------------------------|----------------|-------------------|-----------------------|
| | | 2014/15 | 2013/14 | Volume Difference | Percentage Difference | September 2014 | September 2013 | Volume Difference | Percentage Difference |
| Ashfield | Domestic Crimes | 311 | 302 | 9 | 3% | 63 | 53 | 10 | 19% |
| | Domestic Incidents | 740 | 1058 | -318 | -30% | 145 | 135 | 10 | 7% |
| | Domestic Abuse Total | 1051 | 1360 | -309 | -23% | 208 | 188 | 20 | 11% |
| Bas setlaw | Domestic Crimes | 302 | 228 | 74 | 32% | 52 | 29 | 23 | 79% |
| | Domestic Incidents | 608 | 814 | -206 | -25% | 138 | 123 | 15 | 12% |
| | Domestic Abuse Total | 910 | 1042 | -132 | -13% | 190 | 152 | 38 | 25% |
| Broxtowe | Domestic Crimes | 221 | 184 | 37 | 20% | 41 | 32 | 9 | 28% |
| | Domestic Incidents | 429 | 573 | -144 | -25% | 92 | 80 | 12 | 15% |
| | Domestic Abuse Total | 650 | 757 | -107 | -14% | 133 | 112 | 21 | 19% |
| City | Domestic Crimes | 1273 | 1304 | -31 | -2% | 198 | 188 | 10 | 5% |
| | Domestic Incidents | 2666 | 3447 | -781 | -23% | 523 | 547 | -24 | -4% |
| | Domestic Abuse Total | 3939 | 4751 | -812 | -17% | 721 | 735 | -14 | -2% |
| Gedling | Domestic Crimes | 271 | 249 | 22 | 9% | 44 | 39 | 5 | 13% |
| | Domestic Incidents | 486 | 692 | -206 | -30% | 79 | 91 | -12 | -13% |
| | Domestic Abuse Total | 757 | 941 | -184 | -20% | 123 | 130 | -7 | -5% |
| Mansfield | Domestic Crimes | 416 | 329 | 87 | 26% | 57 | 64 | -7 | -11% |
| | Domestic Incidents | 710 | 974 | -264 | -27% | 130 | 123 | 7 | 6% |
| | Domestic Abuse Total | 1126 | 1303 | -177 | -14% | 187 | 187 | 0 | 0% |
| Newark & Sherwood | Domestic Crimes | 265 | 237 | 28 | 12% | 35 | 53 | -18 | -34% |
| | Domestic Incidents | 511 | 651 | -140 | -22% | 85 | 101 | -16 | -16% |
| | Domestic Abuse Total | 776 | 888 | -112 | -13% | 120 | 154 | -34 | -22% |
| Rushcliffe | Domestic Crimes | 110 | 115 | -5 | -4% | 17 | 15 | 2 | 13% |
| | Domestic Incidents | 244 | 317 | -73 | -23% | 56 | 44 | 12 | 27% |
| | Domestic Abuse Total | 354 | 432 | -78 | -18% | 73 | 59 | 14 | 24% |

To monitor the number of Hate Crimes

| Area | Offence Type | Year-to-Date Performance | | | | Month-to-Date Performance | | | |
|--------------|-----------------------|--------------------------|---------|-------------------|-----------------------|---------------------------|----------------|-------------------|-----------------------|
| | | 2014/15 | 2013/14 | Volume Difference | Percentage Difference | September 2014 | September 2013 | Volume Difference | Percentage Difference |
| Force | Victim-Based Offences | 209 | 199 | 10 | 5% | 32 | 28 | 4 | 14% |
| | Public Order Offences | 258 | 210 | 48 | 23% | 44 | 37 | 7 | 19% |
| | Hate Crime Total | 467 | 409 | 58 | 14% | 76 | 65 | 11 | 17% |

| Area | Offence Type | Year-to-Date Performance | | | | Month-to-Date Performance | | | |
|-------------------------------|-----------------------|--------------------------|---------|-------------------|-----------------------|---------------------------|----------------|-------------------|-----------------------|
| | | 2014/15 | 2013/14 | Volume Difference | Percentage Difference | September 2014 | September 2013 | Volume Difference | Percentage Difference |
| Nottingham City | Victim-Based Offences | 101 | 90 | 11 | 12% | 11 | 9 | 2 | 22% |
| | Public Order Offences | 129 | 129 | 0 | 0% | 27 | 21 | 6 | 29% |
| | Hate Crime Total | 230 | 219 | 11 | 5% | 38 | 30 | 8 | 27% |
| Nottinghamshire County | Victim-Based Offences | 108 | 109 | -1 | -1% | 21 | 19 | 2 | 11% |
| | Public Order Offences | 129 | 81 | 48 | 59% | 17 | 16 | 1 | 6% |
| | Hate Crime Total | 237 | 190 | 47 | 25% | 38 | 35 | 3 | 9% |

| Area | Offence Type | Year-to-Date Performance | | | | Month-to-Date Performance | | | |
|------------------------------|-----------------------|--------------------------|---------|-------------------|-----------------------|---------------------------|----------------|-------------------|-----------------------|
| | | 2014/15 | 2013/14 | Volume Difference | Percentage Difference | September 2014 | September 2013 | Volume Difference | Percentage Difference |
| Ashfield | Victim-Based Offences | 18 | 17 | 1 | 6% | 4 | 5 | -1 | -20% |
| | Public Order Offences | 23 | 22 | 1 | 5% | 5 | 4 | 1 | 25% |
| | Hate Crime Total | 41 | 39 | 2 | 5% | 9 | 9 | 0 | 0% |
| Bas setlaw | Victim-Based Offences | 21 | 6 | 15 | 250% | 5 | 2 | 3 | 150% |
| | Public Order Offences | 24 | 9 | 15 | 167% | 2 | 3 | -1 | -33% |
| | Hate Crime Total | 45 | 15 | 30 | 200% | 7 | 5 | 2 | 40% |
| Broxtowe | Victim-Based Offences | 6 | 22 | -16 | -73% | 1 | 3 | -2 | -67% |
| | Public Order Offences | 11 | 8 | 3 | 38% | 4 | 1 | 3 | 300% |
| | Hate Crime Total | 17 | 30 | -13 | -43% | 5 | 4 | 1 | 25% |
| City | Victim-Based Offences | 101 | 90 | 11 | 12% | 11 | 9 | 2 | 22% |
| | Public Order Offences | 129 | 129 | 0 | 0% | 27 | 21 | 6 | 29% |
| | Hate Crime Total | 230 | 219 | 11 | 5% | 38 | 30 | 8 | 27% |
| Gedling | Victim-Based Offences | 15 | 18 | -3 | -17% | 1 | 1 | 0 | 0% |
| | Public Order Offences | 19 | 11 | 8 | 73% | 2 | 2 | 0 | 0% |
| | Hate Crime Total | 34 | 29 | 5 | 17% | 3 | 3 | 0 | 0% |
| Mansfield | Victim-Based Offences | 20 | 26 | -6 | -23% | 5 | 6 | -1 | -17% |
| | Public Order Offences | 22 | 24 | -2 | -8% | 4 | 5 | -1 | -20% |
| | Hate Crime Total | 42 | 50 | -8 | -16% | 9 | 11 | -2 | -18% |
| Newark & Sherwood | Victim-Based Offences | 21 | 16 | 5 | 31% | 5 | 2 | 3 | 150% |
| | Public Order Offences | 21 | 6 | 15 | 250% | 0 | 1 | -1 | -100% |
| | Hate Crime Total | 42 | 22 | 20 | 91% | 5 | 3 | 2 | 67% |
| Rushcliffe | Victim-Based Offences | 7 | 4 | 3 | 75% | 0 | 0 | 0 | #DIV/0 |
| | Public Order Offences | 9 | 1 | 8 | 800% | 0 | 0 | 0 | #DIV/0 |
| | Hate Crime Total | 16 | 5 | 11 | 220% | 0 | 0 | 0 | #DIV/0 |