

Appendix B

Accompanying Tables and Charts

1.6 Reduction in 'All Crime' across the Force

	Year-to-date performance				Target Position			Month-to-date performance			
	2014/15	2013/14	Volume Change	Percentage Change	Current Target	Difference from Target	Percentage Difference from Target	November 2014	November 2013	Volume Change	Percentage Change
Force	49299	46,458	2841	6.12%	46,457	2842	6.12%	6381	5704	677	11.87%
City Division	21534	20,434	1100	5.38%	20,433	1101	5.39%	2833	2523	310	12.29%
County Division	27765	26,024	1741	6.69%	26,023	1742	6.69%	3548	3181	367	11.54%
County West	9662	9,162	500	5.46%	9,161	501	5.47%	1277	1127	150	13.31%
Ashfield	4556	4,695	-139	-2.96%	4,694	-138	-2.94%	565	591	-26	-4.40%
Mansfield	5106	4,467	639	14.30%	4,466	640	14.33%	712	536	176	32.84%
County East	9131	8,215	916	11.15%	8,214	917	11.16%	1159	1001	158	15.78%
Bassetlaw	5161	4,746	415	8.74%	4,745	416	8.77%	624	572	52	9.09%
Newark & Sherwood	3970	3,469	501	14.44%	3,468	502	14.48%	535	429	106	24.71%
County South	8972	8,647	325	3.76%	8,646	326	3.77%	1112	1053	59	5.60%
Broxtowe	3243	3,202	41	1.28%	3,201	42	1.31%	417	394	23	5.84%
Gedling	3471	3,218	253	7.86%	3,217	254	7.90%	399	412	-13	-3.16%
Rushcliffe	2258	2,227	31	1.39%	2,226	32	1.44%	296	247	49	19.84%
City Division	21534	20,434	1100	5.38%	20,433	1101	5.39%	2833	2523	310	12.29%
City Central	6076	5,582	494	8.85%	5,581	495	8.87%	811	671	140	20.86%
City Centre	4768	5,000	-232	-4.64%	4,999	-231	-4.62%	663	650	13	2.00%
City North	6086	5,829	257	4.41%	5,828	258	4.43%	759	662	97	14.65%
City South	4604	4,023	581	14.44%	4,022	582	14.47%	600	540	60	11.11%

	Year-to-date performance				Target Position			Month-to-date performance			
	2014/15	2013/14	Volume Change	Percentage Change	Current Target	Difference from Target	Percentage Difference from Target	November 2014	November 2013	Volume Change	Percentage Change
All Crime	49299	46,458	2841	6.12%	46,457	2842	6.12%	6381	5704	677	11.87%
Homicide	6	10	-4	-40.00%	9	-3	-33.33%	1	3	-2	-66.67%
Violence with injury	6444	5,479	965	17.61%	5,478	966	17.63%	838	620	218	35.16%
Violence without injury	4619	3,568	1051	29.46%	3,567	1052	29.49%	539	421	118	28.03%
Rape	423	260	163	62.69%	259	164	63.32%	60	23	37	160.87%
Other sexual offences	776	475	301	63.37%	474	302	63.71%	96	56	40	71.43%
Robbery of business property	69	70	-1	-1.43%	69	0	0.00%	15	8	7	87.50%
Robbery of personal property	654	656	-2	-0.30%	655	-1	-0.15%	86	77	9	11.69%
Burglary dwelling	2804	3,029	-225	-7.43%	3,028	-224	-7.40%	414	483	-69	-14.29%
Burglary other	3142	3,047	95	3.12%	3,046	96	3.15%	379	417	-38	-9.11%
Theft of motor vehicle	732	962	-230	-23.91%	961	-229	-23.83%	97	127	-30	-23.62%
Theft from motor vehicle	3260	3,348	-88	-2.63%	3,347	-87	-2.60%	343	428	-85	-19.86%
Vehicle interference	559	197	362	183.76%	196	363	185.20%	76	25	51	204.00%
Theft from person	784	1,071	-287	-26.80%	1,070	-286	-26.73%	177	128	49	38.28%
Bicycle theft	1632	1,576	56	3.55%	1,575	57	3.62%	187	177	10	5.65%
Shoplifting	5205	5,140	65	1.26%	5,139	66	1.28%	722	645	77	11.94%
All other theft offences	5965	6,225	-260	-4.18%	6,224	-259	-4.16%	785	710	75	10.56%
Criminal damage	6727	6,556	171	2.61%	6,555	172	2.62%	881	763	118	15.47%
Arson	312	289	23	7.96%	288	24	8.33%	37	38	-1	-2.63%
Victim-Based Crime	44113	41,958	2155	5.14%	41,957	2156	5.14%	5733	5149	584	11.34%
Trafficking in drugs	487	438	49	11.19%	437	50	11.44%	61	57	4	7.02%
Possession of drugs	1903	1,968	-65	-3.30%	1,967	-64	-3.25%	252	240	12	5.00%
Possession of weapons offences	382	380	2	0.53%	379	3	0.79%	47	52	-5	-9.62%
Public order offences	1725	1,175	550	46.81%	1,174	551	46.93%	209	129	80	62.02%
Miscellaneous crimes against society	688	539	149	27.64%	538	150	27.88%	78	77	1	1.30%
Other crimes against society	5185	4,500	685	15.22%	4,499	686	15.25%	647	555	92	16.58%

Year-to-Date Performance

Month-to-Date Performance

Priority Area	2014/15	2013/14	Volume Difference	Percentage Difference	November 2014	November 2013	Volume Difference	Percentage Difference
Nottingham City								
Arboretum	1,115	995	120	12%	155	130	25	19%
Aspley	1,031	1,065	-34	-3%	142	97	45	46%
Bridge	751	575	176	31%	73	74	-1	-1%
Bulwell	1,319	1,306	13	1%	188	173	15	9%
St Ann's	909	854	55	6%	117	110	7	6%
Total	5,125	4,795	330	7%	675	584	91	16%

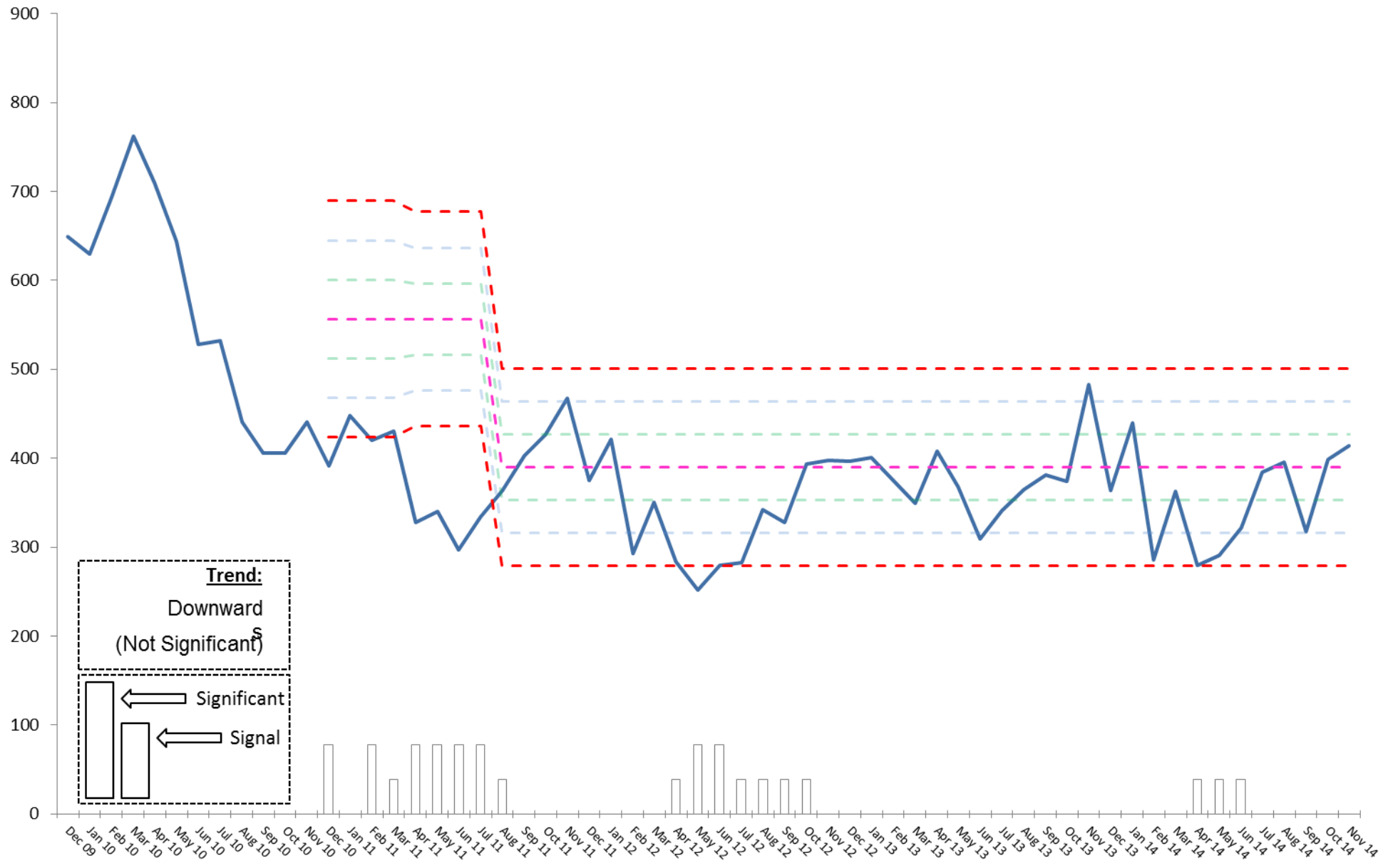
Nottinghamshire County

Carr Bank	210	220	-10	-5%	21	26	-5	-19%
Oak Tree	222	219	3	1%	28	29	-1	-3%
Portland	754	585	169	29%	94	59	35	59%
Woodlands	681	559	122	22%	133	85	48	56%
Hucknall East	394	449	-55	-12%	52	64	-12	-19%
Kirkby East	446	400	46	12%	62	53	9	17%
Sutton Central	536	496	40	8%	69	60	9	15%
Sutton East	238	278	-40	-14%	18	30	-12	-40%
Sutton In Ashfield North	421	494	-73	-15%	59	56	3	5%
Bridge (Newark)	325	348	-23	-7%	45	39	6	15%
Castle	715	561	154	27%	92	60	32	53%
Worksop North West	580	513	67	13%	53	62	-9	-15%
Worksop South	437	490	-53	-11%	53	71	-18	-25%
Eastwood South	533	507	26	5%	82	54	28	52%
Netherfield And Colwick	388	394	-6	-2%	35	59	-24	-41%
Total	6,880	6,513	367	6%	896	807	89	11%

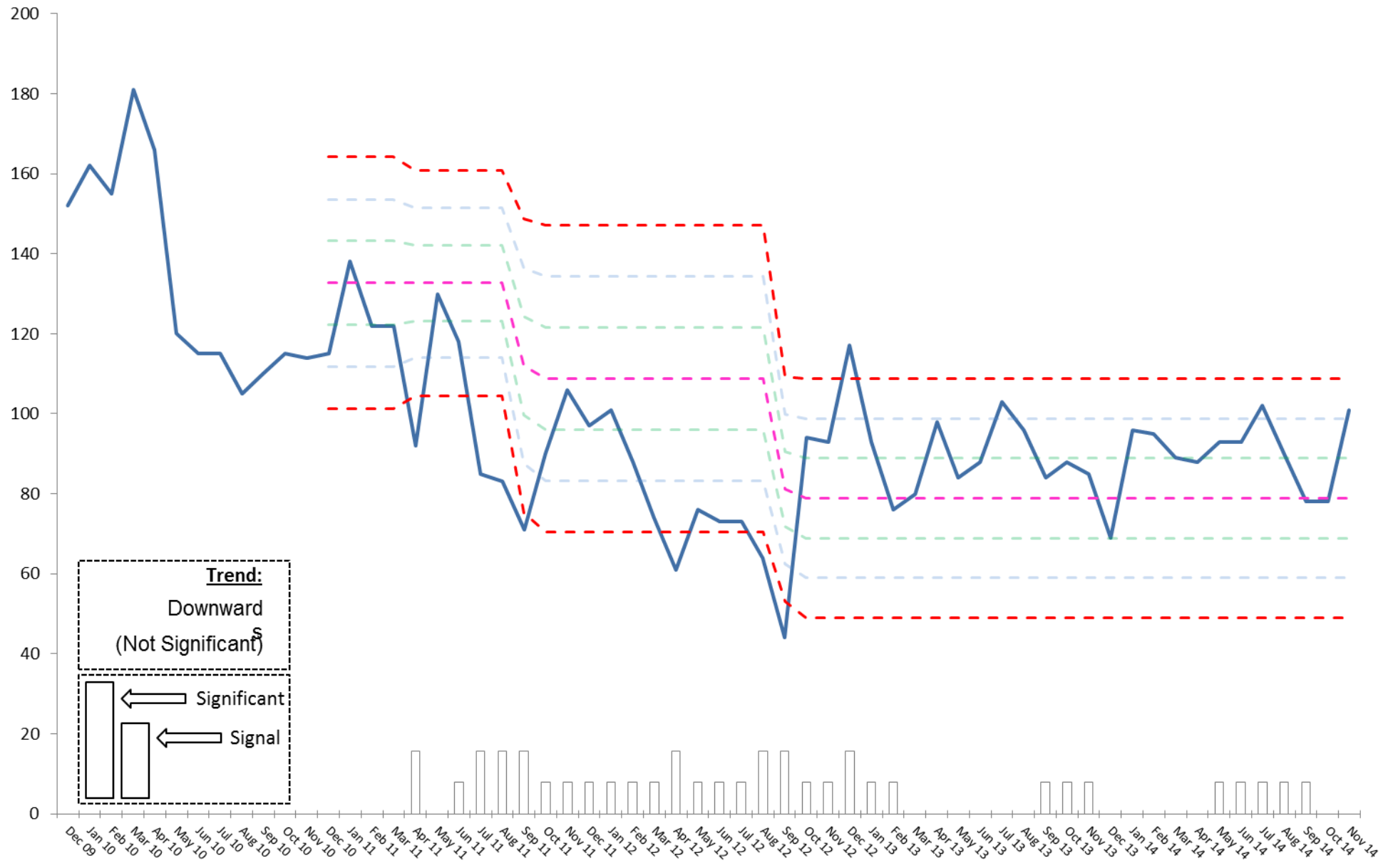
Discretionary Areas

Ladybrook	171	200	-29	-15%	20	22	-2	-9%
Worksop South East	860	755	105	14%	92	75	17	23%
Trent Bridge	272	300	-28	-9%	30	37	-7	-19%
Total	1,303	1,255	48	4%	142	134	8	6%

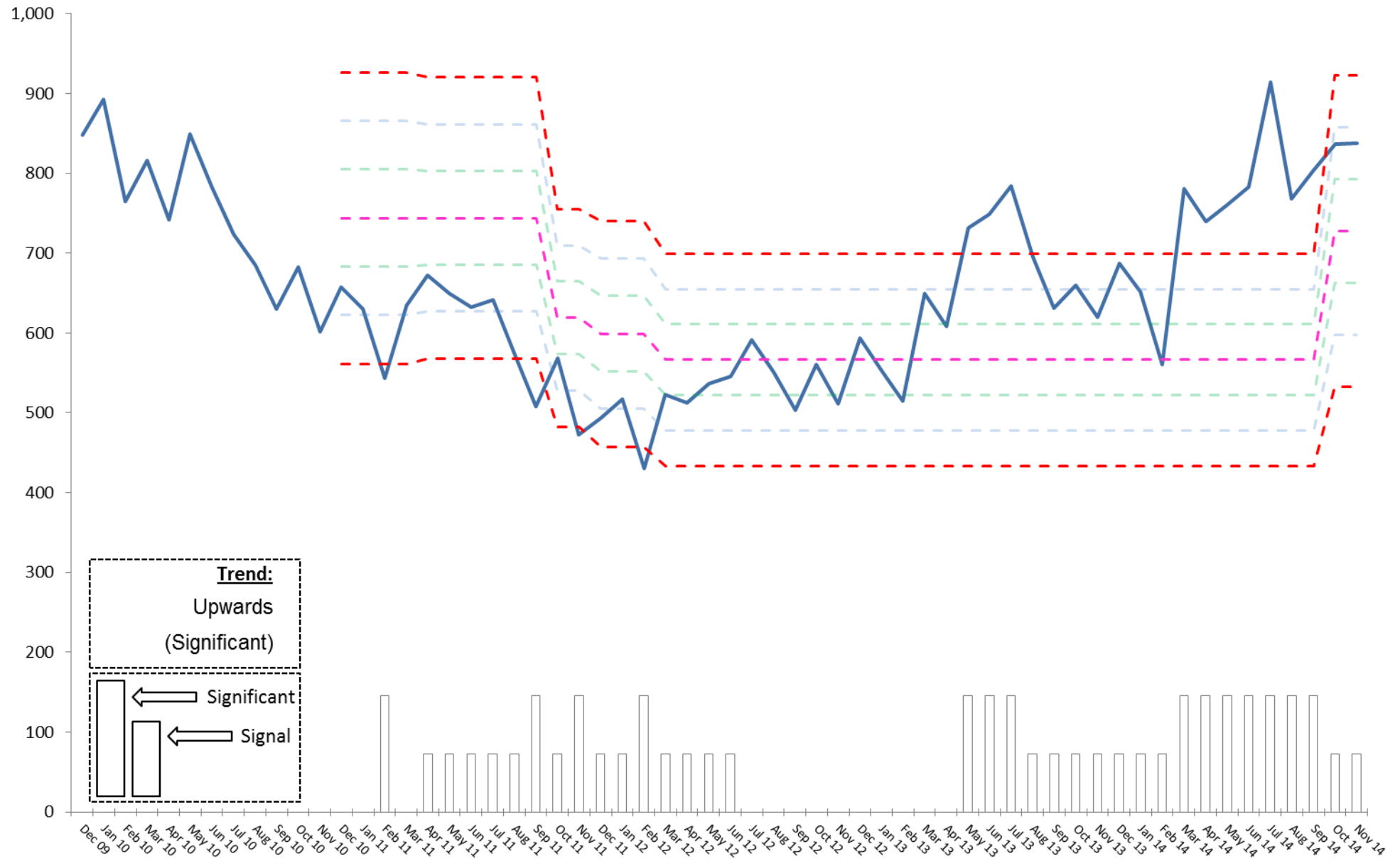
1.6 Burglary Dwelling performance over-time



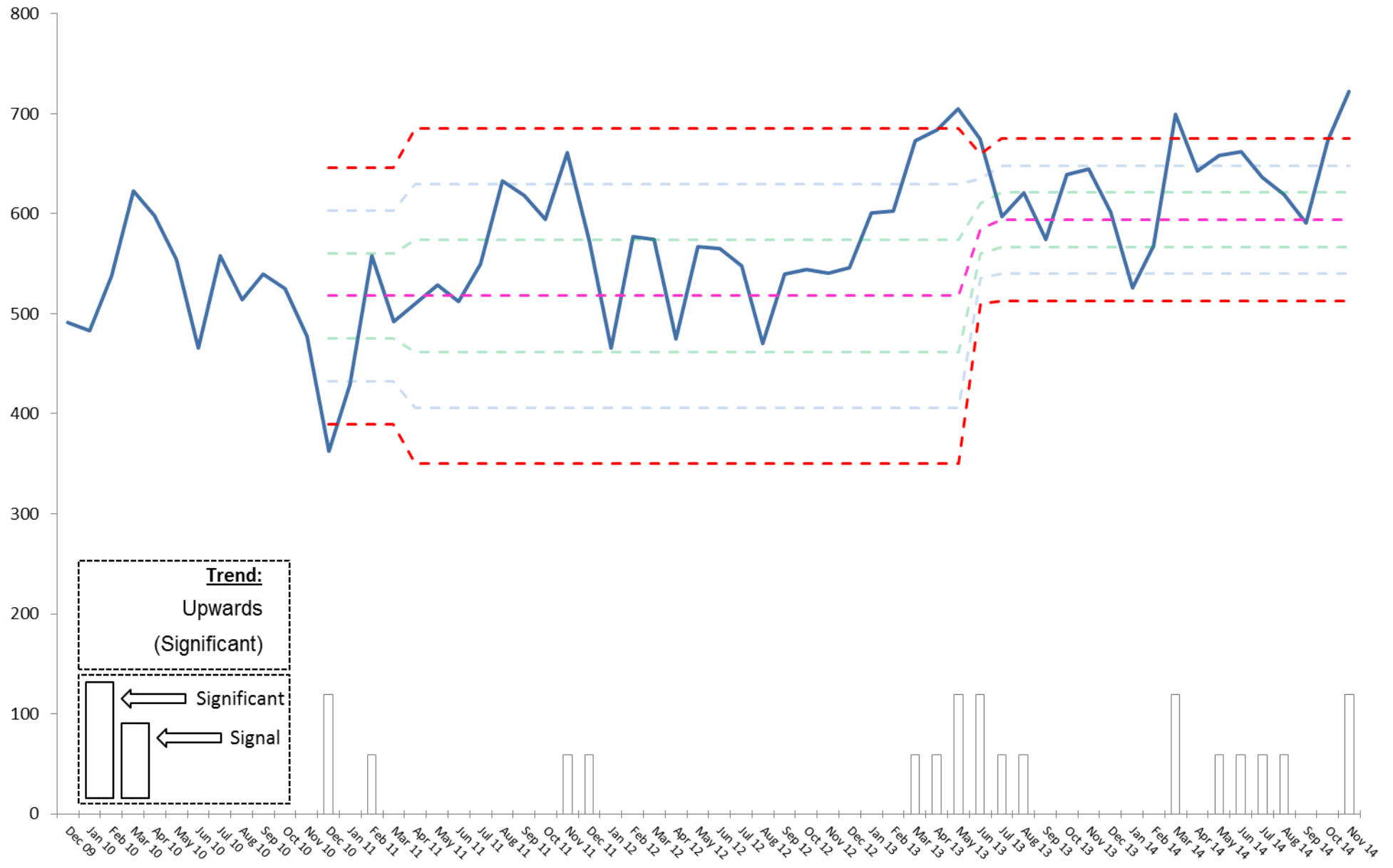
1.6 Robbery performance over-time



1.6 Violence with Injury performance over-time



1.6 Shop Theft performance over-time



1.7 Reduction in Anti-Social Behaviour (ASB) incidents across the Force

	Year-to-date performance				Target Position			Month-to-date performance			
	2014/15	2013/14	Volume Change	Percentage Change	Current Target	Difference from Target	Percentage Difference from Target	November 2014	November 2013	Volume Change	Percentage Change
Force	27,732	25,287	2,445	9.67%	23,264	4467.96	16.11%	2953	2600	353	13.58%
City Division	13,251	11,051	2,200	19.91%	10,167	3084.08	23.27%	1477	1195	282	23.60%
County Division	14,481	14,236	245	1.72%	13,097	1383.88	9.56%	1476	1405	71	5.05%
County West	5,456	5,410	46	0.85%	4,977	478.8	8.78%	538	571	-33	-5.78%
Ashfield	2,759	2,722	37	1.36%	2,504	254.76	9.23%	284	282	2	0.71%
Mansfield	2,697	2,688	9	0.33%	2,473	224.04	8.31%	254	289	-35	-12.11%
County East	4,472	4,561	-89	-1.95%	4,196	275.88	6.17%	478	453	25	5.52%
Bassetlaw	2,353	2,517	-164	-6.52%	2,316	37.36	1.59%	258	264	-6	-2.27%
Newark & Sherwood	2,119	2,044	75	3.67%	1,880	238.52	11.26%	220	189	31	16.40%
County South	4,553	4,265	288	6.75%	3,924	629.2	13.82%	460	381	79	20.73%
Broxtowe	1,701	1,625	76	4.68%	1,495	206	12.11%	175	138	37	26.81%
Gedling	1,741	1,557	184	11.82%	1,432	308.56	17.72%	174	142	32	22.54%
Rushcliffe	1,111	1,083	28	2.59%	996	114.64	10.32%	111	101	10	9.90%
City Division	13,251	11,051	2,200	19.91%	10,167	3084.08	23.27%	1477	1195	282	23.60%
City Central	3,703	3,096	607	19.61%	2,848	854.68	23.08%	441	334	107	32.04%
City Centre	1,872	1,581	291	18.41%	1,455	417.48	22.30%	269	231	38	16.45%
City North	4,199	3,574	625	17.49%	3,288	910.92	21.69%	390	346	44	12.72%
City South	3,477	2,800	677	24.18%	2,576	901	25.91%	377	284	93	32.75%

	Year-to-date performance				Target Position			Month-to-date performance			
	2014/15	2013/14	Volume Change	Percentage Change	Current Target	Difference from Target	Percentage Difference from Target	November 2014	November 2013	Volume Change	Percentage Change
ASB Environmental	2,144	2,086	58	2.78%	1,919	224.88	10.49%	209	185	24	12.97%
ASB Nuisance	20,901	18,541	2,360	12.73%	17,058	3843.28	18.39%	2248	1925	323	16.78%
ASB Personal	4,687	4,660	27	0.58%	4,287	399.8	8.53%	496	490	6	1.22%

1.8 An increase in the detection rate for Victim-Based Crime

	Year-to-date performance			Target Position		Month-to-date performance		
	2014/15	2013/14	Change	Current Target	Percentage Difference from Target	November 2014	November 2013	Change
Force	24.58%	27.45%	-2.88%	27.46%	-2.89%	19.83%	28.32%	-8.48%
City Division	23.13%	27.22%	-4.08%	27.23%	-4.09%	18.25%	26.94%	-8.68%
County Division	25.66%	27.63%	-1.97%	27.64%	-1.98%	21.05%	29.38%	-8.32%
County West	27.88%	28.37%	-0.48%	28.38%	-0.49%	24.87%	31.19%	-6.32%
Ashfield	23.21%	23.82%	-0.62%	23.83%	-0.63%	16.18%	27.52%	-11.33%
Mansfield	32.22%	33.36%	-1.13%	33.37%	-1.14%	32.29%	35.53%	-3.24%
County East	25.70%	28.74%	-3.04%	28.75%	-3.05%	19.02%	31.42%	-12.40%
Bassetlaw	25.47%	26.99%	-1.52%	27.00%	-1.53%	21.58%	28.73%	-7.16%
Newark & Sherwood	26.01%	31.17%	-5.16%	31.18%	-5.17%	15.99%	35.14%	-19.15%
County South	23.28%	25.78%	-2.50%	25.79%	-2.51%	19.01%	25.49%	-6.48%
Broxtowe	22.71%	23.37%	-0.66%	23.38%	-0.67%	15.48%	27.93%	-12.45%
Gedling	25.49%	30.56%	-5.07%	30.57%	-5.08%	24.17%	24.27%	-0.10%
Rushcliffe	20.76%	22.46%	-1.70%	22.47%	-1.71%	17.33%	23.71%	-6.38%
City Division	23.13%	27.22%	-4.08%	27.23%	-4.09%	18.25%	26.94%	-8.68%
City Central	18.79%	23.14%	-4.35%	23.15%	-4.36%	15.24%	22.73%	-7.48%
City Centre	31.19%	32.74%	-1.55%	32.75%	-1.56%	22.42%	30.65%	-8.23%
City North	23.03%	26.52%	-3.49%	26.53%	-3.50%	20.92%	27.36%	-6.44%
City South	20.83%	27.00%	-6.17%	27.01%	-6.18%	14.18%	27.20%	-13.02%

	Year-to-date performance			Target Position		Month-to-date performance		
	2014/15	2013/14	Percentage Change	Current Target	Percentage Difference from Target	November 2014	November 2013	Change
Homicide	50.00%	70.00%	-20.00%	70.01%	-20.01%		33.33%	-33.33%
Violence with injury	42.83%	49.74%	-6.90%	49.75%	-6.91%	34.61%	55.81%	-21.20%
Violence without injury	40.05%	54.93%	-14.88%	54.94%	-14.89%	32.10%	55.34%	-23.25%
Rape	10.87%	18.08%	-7.20%	18.09%	-7.21%	5.00%	34.78%	-29.78%
Other sexual offences	20.10%	28.42%	-8.32%	28.43%	-8.33%	12.50%	28.57%	-16.07%
Robbery of business property	36.23%	22.86%	13.37%	22.87%	13.36%	46.67%		46.67%
Robbery of personal property	24.01%	24.09%	-0.08%	24.10%	-0.09%	17.44%	23.38%	-5.93%
Burglary dwelling	11.16%	13.40%	-2.24%	13.41%	-2.25%	10.14%	13.87%	-3.73%
Burglary other	6.49%	7.98%	-1.48%	7.99%	-1.49%	1.85%	10.55%	-8.70%
Theft of motor vehicle	17.90%	19.75%	-1.85%	19.76%	-1.86%	14.43%	27.56%	-13.13%
Theft from motor vehicle	5.89%	6.18%	-0.29%	6.19%	-0.30%	10.20%	5.84%	4.36%
Vehicle interference	6.26%	5.08%	1.19%	5.09%	1.18%	3.95%		3.95%
Theft from person	4.97%	4.39%	0.59%	4.40%	0.58%	2.82%	3.13%	-0.30%
Bicycle theft	5.88%	6.28%	-0.40%	6.29%	-0.41%	4.81%	6.78%	-1.97%
Shoplifting	55.81%	58.77%	-2.96%	58.78%	-2.97%	44.04%	60.00%	-15.96%
All other theft offences	9.99%	12.67%	-2.68%	12.68%	-2.69%	7.01%	14.93%	-7.92%
Criminal damage	19.33%	21.71%	-2.38%	21.72%	-2.39%	16.69%	19.92%	-3.24%
Arson	10.58%	12.46%	-1.88%	12.47%	-1.89%	5.41%	10.53%	-5.12%
Victim-Based Crime	24.58%	27.45%	-2.88%	27.46%	-2.89%	19.83%	28.32%	-8.48%

1.8 Use of Community Resolutions

	2014/15	% Prop of total	2013/14	% Prop of total
Cautions	1697	11.81%	3273	21.35%
Charge / Summons	9248	64.38%	8008	52.24%
Community Resolution	2488	17.32%	2661	17.36%
Other	606	4.22%	849	5.54%
Penalty Notice for Crime	140	0.97%	141	0.92%
TIC not previously recorded	7	0.05%	24	0.16%
TIC previously recorded	177	1.23%	372	2.43%
Total	14364	100.00%	15328	100.00%

1.8 Breakdown of Outcome Codes

	Year-to-date performance
	2014/15
01. Charged/Summons	9248
02. Caution - Youths	248
03. Caution - Adults	1450
04. Taken Into Consideration	184
05. Offender Has Died	8
06. Penalty Notices For Disorder	140
07. Cannabis Warning	598
08. Community Resolution	2488
09. Prosecution Not In The Public Interest (CPS)	625
10. Action Not In The Public Interest (Police)	1198
11. Named Suspect below the age of criminal responsibility	56
12. Named suspect too ill (physical or mental health) to prosecute	105
13. Named suspect but victim/key witness is dead or too ill	26
14. Victim declines/unable to ID suspect	703
15. Victim supports but evidential difficulties prevent further action	3350
16. Victim does not support/withdraws support	3436
17. Prosecution time limit expired	49
18. Investigation Complete: No suspect identified	24600
Total	48512

1.9 The number of alcohol-related crimes

	Year-to-date performance				Month-to-date performance			
	2014/15	2013/14	Volume Change	Percentage Change	October 2014	October 2013	Volume Change	Percentage Change
All Crime	49,299	46,458	2,841	6.1%	6,539	5,554	985	17.7%
Alcohol-related	6,676	6,398	278	4.3%	853	756	97	12.8%
% Alcohol-related	13.5%	13.8%		-0.3%	13.0%	13.6%		-0.6%
Victim-Based Crime	44,113	41,958	2,155	5.1%	5,896	5,067	829	16.4%
Alcohol-related	5,914	5,680	234	4.1%	768	679	89	13.1%
% Alcohol-related	13.4%	13.5%		-0.1%	13.0%	13.4%		-0.4%
Violence Against the Person	11,069	9,057	2,012	22.2%	1,442	1,103	339	30.7%
Alcohol-related	2,705	2,315	390	16.8%	341	260	81	31.2%
% Alcohol-related	24.4%	25.6%		-1.2%	23.6%	23.6%		0.0%
Anti-Social Behaviour	27,732	25,287	2,445	9.7%	3,197	2,955	242	8.2%
Alcohol-related	3,791	3,328	463	13.9%	421	395	26	6.6%
% Alcohol-related	13.7%	13.2%		0.5%	13.2%	13.4%		-0.2%

1.11 To monitor the number of production and supply of drugs

	Year-to-date performance				Taret Position			Month-to-date performance			
	2014/15	2013/14	Volume Change	Percentage Change	Current Target	Difference from Target	Percentage Difference from Target	November 2014	November 2013	Volume Change	Percentage Change
Possession	1903	1,968	-65	-3.30%	1,967	-64	-3.25%	252	240	12	5.00%
Production	233	270	-37	-13.70%	269	-36	-13.38%	19	28	-9	-32.14%
Supply	254	168	86	51.19%	167	87	52.10%	42	29	13	44.83%
Sum:	2390	2,406	-16	-0.67%	2,403	-13	-0.62%	313	297	16	5.39%

3.4 Percentage reduction of people that have been a repeat victim within the previous 12 months

Domestic Violence					Year-to-date performance				2013/14			2014/15		
Repeat Victims	2014/15	2013/14	Volume Change	Percentage Change	Domestic Violence Crimes	Domestic Violence crimes which are repeats	% Proportion of Domestic Violence crimes which are repeats	Domestic Violence Crimes	Domestic Violence crimes which are repeats	% Proportion of Domestic Violence crimes which are repeats				
City	554	542	12	2.2%	1,708	651	38.1%	1,680	675	40.2%				
County	760	753	7	0.9%	2,239	883	39.4%	2,560	943	36.8%				
Force	1,314	1,295	19	1.5%	3,947	1,534	38.9%	4,240	1,618	38.2%				
* Includes domestic abuse incidents to determine repeat victimisation														

Hate Crime					Year-to-date performance				2013/14			2014/15		
Repeat Victims	2014/15	2013/14	Volume Change	Percentage Change	Domestic Violence Crimes	Domestic Violence crimes which are repeats	% Proportion of Domestic Violence crimes which are repeats	Domestic Violence Crimes	Domestic Violence crimes which are repeats	% Proportion of Domestic Violence crimes which are repeats				
City	25	21	4	19.0%	1,708	329	19.3%	1,680	347	20.7%				
County	25	18	7	38.9%	2,239	412	18.4%	2,560	522	20.4%				
Force	50	39	11	28.2%	3,947	741	18.8%	4,240	869	20.5%				
* Only includes notifiable domestic abuse offences to determine repeat victimisation														

Total Repeat Volume					Year-to-date performance				Anti-Social Behaviour				Year-to-date performance			
Repeat Victims	2014/15	2013/14	Volume Change	Percentage Change	Domestic Violence Crimes	Domestic Violence crimes which are repeats	% Proportion of Domestic Violence crimes which are repeats	Domestic Violence Crimes	Domestic Violence crimes which are repeats	% Proportion of Domestic Violence crimes which are repeats	2014/15	2013/14	Volume Change	Percentage Change		
City	579	563	16	2.8%	1,708	651	38.1%	1,680	675	40.2%	2,492	2,050	442	21.6%		
County	785	771	14	1.8%	2,239	883	39.4%	2,560	943	36.8%	2,532	2,523	9	0.4%		
Force	1,364	1,334	30	2.2%	3,947	1,534	38.9%	4,240	1,618	38.2%	5,024	4,573	451	9.9%		

Domestic Violence					Year-to-date performance				Anti-Social Behaviour				Year-to-date performance			
Repeat Victims	2014/15	2013/14	Volume Change	Percentage Change	Domestic Violence Crimes	Domestic Violence crimes which are repeats	% Proportion of Domestic Violence crimes which are repeats	Domestic Violence Crimes	Domestic Violence crimes which are repeats	% Proportion of Domestic Violence crimes which are repeats	2014/15	2013/14	Volume Change	Percentage Change		
City Central	144	127	17	13.4%	1,708	651	38.1%	1,680	675	40.2%	2,492	2,050	442	21.6%		
City Centre	12	7	5	71.4%	2,239	883	39.4%	2,560	943	36.8%	700	594	106	17.8%		
City North	253	245	8	3.3%	2,239	883	39.4%	2,560	943	36.8%	349	256	93	36.3%		
City South	144	163	-19	-11.7%	2,239	883	39.4%	2,560	943	36.8%	787	663	124	18.7%		
					2,239	883	39.4%	2,560	943	36.8%	656	537	119	22.2%		
					2,239	883	39.4%	2,560	943	36.8%	County	2,531	2,522	9	0.4%	
					2,239	883	39.4%	2,560	943	36.8%	Ashfield	506	506	0	0.0%	
					2,239	883	39.4%	2,560	943	36.8%	Bassetlaw	405	415	-10	-2.4%	
					2,239	883	39.4%	2,560	943	36.8%	Broxtowe	284	303	-19	-6.3%	
					2,239	883	39.4%	2,560	943	36.8%	Gedling	273	255	18	7.1%	
					2,239	883	39.4%	2,560	943	36.8%	Mansfield	520	517	3	0.6%	
					2,239	883	39.4%	2,560	943	36.8%	Newark & She	352	356	-4	-1.1%	

Domestic Violence					Year-to-date performance					
Repeat Victims	2014/15	2013/14	Volume Change	Percentage Change	Domestic Violence Crimes	Domestic Violence crimes which are repeats	% Proportion of Domestic Violence crimes which are repeats	Domestic Violence Crimes	Domestic Violence crimes which are repeats	% Proportion of Domestic Violence crimes which are repeats
Ashfield	138	152	-14	-9.2%	1,708	651	38.1%	1,680	675	40.2%
Bassetlaw	119	91	28	30.8%	2,239	883	39.4%	2,560	943	36.8%
Broxtowe	94	80	14	17.5%	2,239	883	39.4%	2,560	943	36.8%
Gedling	112	117	-5	-4.3%	2,239	883	39.4%	2,560	943	36.8%
Mansfield	150	156	-6	-3.8%	2,239	883	39.4%	2,560	943	36.8%
Newark & Sherwood	109	109	0	0.0%	2,239	883	39.4%	2,560	943	36.8%
Rushcliffe	38	48	-10	-20.8%	2,239	883	39.4%	2,560	943	36.8%

3.5 Public confidence in reporting offences to the police

To monitor the number of Serious Sexual Offences

Area	Offence Type	Year-to-Date Performance				Month-to-Date Performance			
		2014/15	2013/14	Volume Difference	Percentage Difference	November 2014	November 2013	Volume Difference	Percentage Difference
Force	Rape	422	260	162	62%	61	23	38	165%
	Other Sexual Offences	529	331	198	60%	71	40	31	78%
	Serious Sexual Offences Total	951	591	360	61%	132	63	69	110%

Area	Offence Type	Year-to-Date Performance				Month-to-Date Performance			
		2014/15	2013/14	Volume Difference	Percentage Difference	November 2014	November 2013	Volume Difference	Percentage Difference
Nottingham City	Rape	198	112	86	77%	31	11	20	182%
	Other Sexual Offences	242	141	101	72%	42	17	25	147%
	Serious Sexual Offences Total	440	253	187	74%	73	28	45	161%
Nottinghamshire County	Rape	224	148	76	51%	30	12	18	150%
	Other Sexual Offences	287	190	97	51%	29	23	6	26%
	Serious Sexual Offences Total	511	338	173	51%	59	35	24	69%

Area	Offence Type	Year-to-Date Performance				Month-to-Date Performance			
		2014/15	2013/14	Volume Difference	Percentage Difference	November 2014	November 2013	Volume Difference	Percentage Difference
Ashfield	Rape	45	21	24	114%	5	2	3	150%
	Other Sexual Offences	46	32	14	44%	4	4	0	0%
	Serious Sexual Offences Total	91	53	38	72%	9	6	3	50%
Bassetlaw	Rape	41	18	23	128%	7	1	6	600%
	Other Sexual Offences	45	26	19	73%	3	3	0	0%
	Serious Sexual Offences Total	86	44	42	95%	10	4	6	150%
Broxtowe	Rape	31	24	7	29%	4	2	2	100%
	Other Sexual Offences	30	21	9	43%	2	0	2	#DIV/0
	Serious Sexual Offences Total	61	45	16	36%	6	2	4	200%
City	Rape	198	112	86	77%	31	11	20	182%
	Other Sexual Offences	242	141	101	72%	42	17	25	147%
	Serious Sexual Offences Total	440	253	187	74%	73	28	45	161%
Gedling	Rape	30	15	15	100%	5	3	2	67%
	Other Sexual Offences	40	28	12	43%	5	6	-1	-17%
	Serious Sexual Offences Total	70	43	27	63%	10	9	1	11%
Mansfield	Rape	42	34	8	24%	3	0	3	#DIV/0
	Other Sexual Offences	66	35	31	89%	10	5	5	100%
	Serious Sexual Offences Total	108	69	39	57%	13	5	8	160%
Newark & Sherwood	Rape	18	22	-4	-18%	1	2	-1	-50%
	Other Sexual Offences	40	38	2	5%	2	3	-1	-33%
	Serious Sexual Offences Total	58	60	-2	-3%	3	5	-2	-40%
Rushcliffe	Rape	17	14	3	21%	5	2	3	150%
	Other Sexual Offences	20	10	10	100%	3	2	1	50%
	Serious Sexual Offences Total	37	24	13	54%	8	4	4	100%

To monitor the number of Domestic Violence incidents and crimes

Area	Offence Type	Year-to-Date Performance				Month-to-Date Performance			
		2014/15	2013/14	Volume Difference	Percentage Difference	November 2014	November 2013	Volume Difference	Percentage Difference
Force	Domestic Crimes	4234	3940	294	7%	544	488	56	11%
	Domestic Incidents	8865	10740	-1875	-17%	1231	1081	150	14%
	Domestic Abuse Total	13099	14680	-1581	-11%	1775	1569	206	13%

Area	Offence Type	Year-to-Date Performance				Month-to-Date Performance			
		2014/15	2013/14	Volume Difference	Percentage Difference	November 2014	November 2013	Volume Difference	Percentage Difference
Nottingham City	Domestic Crimes	1715	1742	-27	-2%	233	203	30	15%
	Domestic Incidents	3703	4403	-700	-16%	509	481	28	6%
	Domestic Abuse Total	5418	6145	-727	-12%	742	684	58	8%
Nottinghamshire County	Domestic Crimes	2519	2198	321	15%	311	285	26	9%
	Domestic Incidents	5162	6337	-1175	-19%	722	600	122	20%
	Domestic Abuse Total	7681	8535	-854	-10%	1033	885	148	17%

Area	Offence Type	Year-to-Date Performance				Month-to-Date Performance			
		2014/15	2013/14	Volume Difference	Percentage Difference	November 2014	November 2013	Volume Difference	Percentage Difference
Ashfield	Domestic Crimes	425	401	24	6%	63	59	4	7%
	Domestic Incidents	1045	1295	-250	-19%	156	121	35	29%
	Domestic Abuse Total	1470	1696	-226	-13%	219	180	39	22%
Bassetlaw	Domestic Crimes	402	289	113	39%	52	30	22	73%
	Domestic Incidents	819	1013	-194	-19%	111	88	23	26%
	Domestic Abuse Total	1221	1302	-81	-6%	163	118	45	38%
Broxtowe	Domestic Crimes	291	245	46	19%	34	33	1	3%
	Domestic Incidents	578	720	-142	-20%	73	71	2	3%
	Domestic Abuse Total	869	965	-96	-10%	107	104	3	3%
City	Domestic Crimes	1715	1742	-27	-2%	233	203	30	15%
	Domestic Incidents	3703	4403	-700	-16%	509	481	28	6%
	Domestic Abuse Total	5418	6145	-727	-12%	742	684	58	8%
Gedling	Domestic Crimes	354	334	20	6%	33	38	-5	-13%
	Domestic Incidents	658	870	-212	-24%	88	79	9	11%
	Domestic Abuse Total	1012	1204	-192	-16%	121	117	4	3%
Mansfield	Domestic Crimes	542	455	87	19%	62	61	1	2%
	Domestic Incidents	982	1211	-229	-19%	128	117	11	9%
	Domestic Abuse Total	1524	1666	-142	-9%	190	178	12	7%
Newark & Sherwood	Domestic Crimes	360	320	40	13%	49	42	7	17%
	Domestic Incidents	730	836	-106	-13%	114	94	20	21%
	Domestic Abuse Total	1090	1156	-66	-6%	163	136	27	20%
Rushcliffe	Domestic Crimes	145	154	-9	-6%	18	22	-4	-18%
	Domestic Incidents	350	392	-42	-11%	52	30	22	73%
	Domestic Abuse Total	495	546	-51	-9%	70	52	18	35%

To monitor the number of Hate Crimes

Area	Offence Type	Year-to-Date Performance				Month-to-Date Performance			
		2014/15	2013/14	Volume Difference	Percentage Difference	November 2014	November 2013	Volume Difference	Percentage Difference
Force	Victim-Based Offences	289	250	39	16%	37	22	15	68%
	Public Order Offences	340	274	66	24%	35	25	10	40%
	Hate Crime Total	629	524	105	20%	72	47	25	53%

Area	Offence Type	Year-to-Date Performance				Month-to-Date Performance			
		2014/15	2013/14	Volume Difference	Percentage Difference	November 2014	November 2013	Volume Difference	Percentage Difference
Nottingham City	Victim-Based Offences	155	121	34	28%	24	15	9	60%
	Public Order Offences	172	168	4	2%	20	10	10	100%
	Hate Crime Total	327	289	38	13%	44	25	19	76%
Nottinghamshire County	Victim-Based Offences	134	129	5	4%	13	7	6	86%
	Public Order Offences	168	106	62	58%	15	15	0	0%
	Hate Crime Total	302	235	67	29%	28	22	6	27%

Area	Offence Type	Year-to-Date Performance				Month-to-Date Performance			
		2014/15	2013/14	Volume Difference	Percentage Difference	November 2014	November 2013	Volume Difference	Percentage Difference
Ashfield	Victim-Based Offences	21	20	1	5%	1	3	-2	-67%
	Public Order Offences	26	29	-3	-10%	0	3	-3	-100%
	Hate Crime Total	47	49	-2	-4%	1	6	-5	-83%
Bassetlaw	Victim-Based Offences	27	11	16	145%	3	0	3	#DIV/0
	Public Order Offences	32	12	20	167%	2	2	0	0%
	Hate Crime Total	59	23	36	157%	5	2	3	150%
Broxtowe	Victim-Based Offences	8	23	-15	-65%	0	1	-1	-100%
	Public Order Offences	13	9	4	44%	0	1	-1	-100%
	Hate Crime Total	21	32	-11	-34%	0	2	-2	-100%
City	Victim-Based Offences	155	121	34	28%	24	15	9	60%
	Public Order Offences	172	168	4	2%	20	10	10	100%
	Hate Crime Total	327	289	38	13%	44	25	19	76%
Gedling	Victim-Based Offences	20	21	-1	-5%	1	0	1	#DIV/0
	Public Order Offences	20	17	3	18%	1	3	-2	-67%
	Hate Crime Total	40	38	2	5%	2	3	-1	-33%
Mansfield	Victim-Based Offences	25	28	-3	-11%	5	1	4	400%
	Public Order Offences	33	27	6	22%	8	2	6	300%
	Hate Crime Total	58	55	3	5%	13	3	10	333%
Newark & Sherwood	Victim-Based Offences	24	18	6	33%	2	0	2	#DIV/0
	Public Order Offences	30	11	19	173%	3	4	-1	-25%
	Hate Crime Total	54	29	25	86%	5	4	1	25%
Rushcliffe	Victim-Based Offences	9	8	1	13%	1	2	-1	-50%
	Public Order Offences	14	1	13	1,300%	1	0	1	#DIV/0
	Hate Crime Total	23	9	14	156%	2	2	0	0%