

Appendix B

Accompanying Tables and Charts

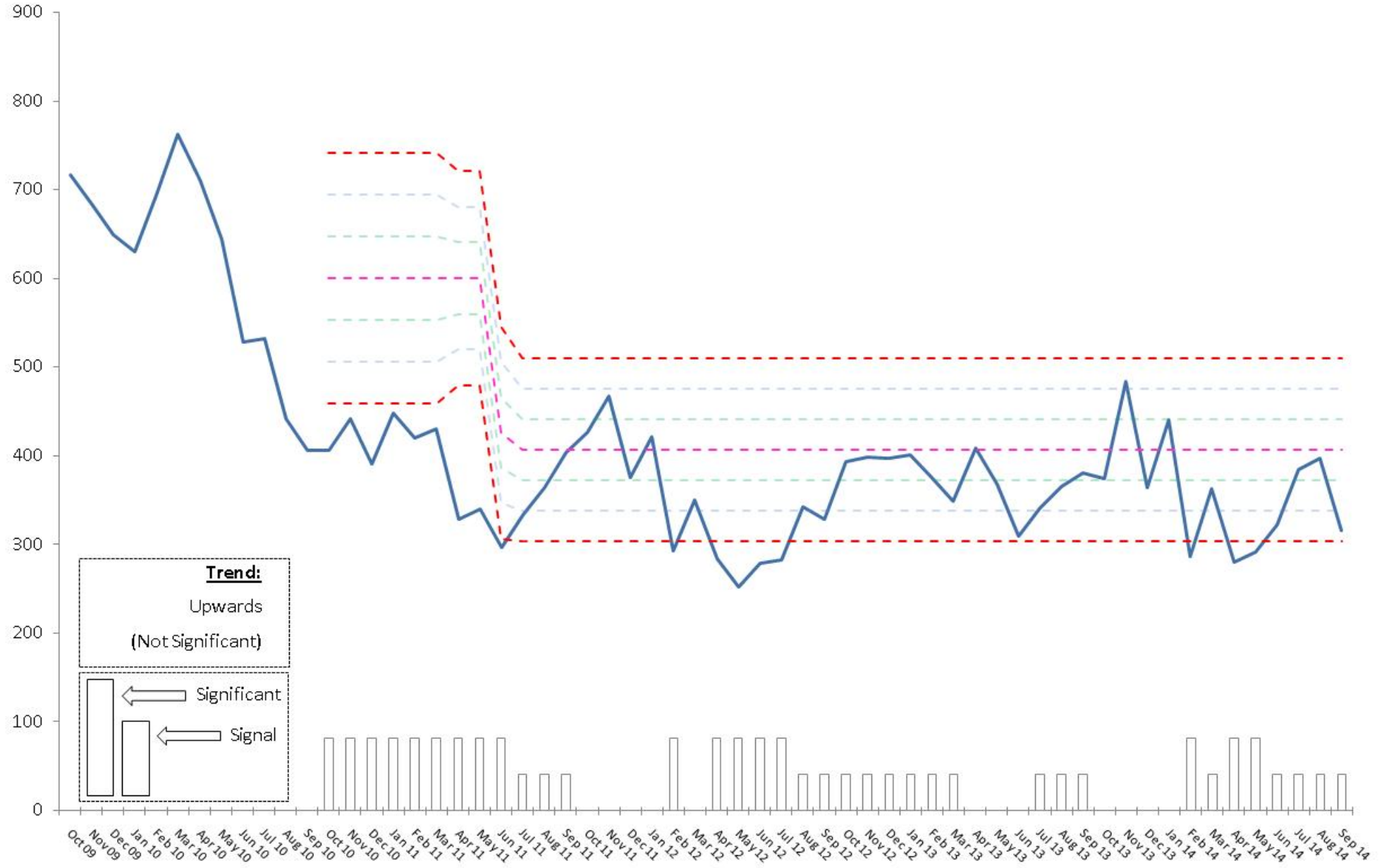
1.6 Reduction in 'All Crime' across the Force

	Year-to-date performance				Target Position			Month-to-date performance			
	2014/15	2013/14	Volume Change	Percentage Change	Current Target	Difference from Target	Percentage Difference from Target	September 2014	September 2013	Volume Change	Percentage Change
Force	36390	35,201	1189	3.4%	35,200	1190	3.4%	5959	5576	383	6.9%
City Division	15816	15,396	420	2.7%	15,395	421	2.7%	2519	2346	173	7.4%
County Division	20574	19,805	769	3.9%	19,804	770	3.9%	3440	3230	210	6.5%
County West	7115	6,957	158	2.3%	6,956	159	2.3%	1212	1150	62	5.4%
Ashfield	3383	3,548	-165	-4.7%	3,547	-164	-4.6%	586	609	-23	-3.8%
Mansfield	3732	3,409	323	9.5%	3,408	324	9.5%	626	541	85	15.7%
County East	6792	6,259	533	8.5%	6,258	534	8.5%	1095	1018	77	7.6%
Bassetlaw	3874	3,613	261	7.2%	3,612	262	7.3%	657	573	84	14.7%
Newark & Sherwood	2918	2,646	272	10.3%	2,645	273	10.3%	438	445	-7	-1.6%
County South	6667	6,589	78	1.2%	6,588	79	1.2%	1133	1062	71	6.7%
Broxtowe	2396	2,454	-58	-2.4%	2,453	-57	-2.3%	410	388	22	5.7%
Gedling	2589	2,410	179	7.4%	2,409	180	7.5%	404	386	18	4.7%
Rushcliffe	1682	1,725	-43	-2.5%	1,724	-42	-2.4%	319	288	31	10.8%
City Division	15816	15,396	420	2.7%	15,395	421	2.7%	2519	2346	173	7.4%
City Central	4447	4,206	241	5.7%	4,205	242	5.8%	737	571	166	29.1%
City Centre	3458	3,665	-207	-5.6%	3,664	-206	-5.6%	526	584	-58	-9.9%
City North	4502	4,472	30	0.7%	4,471	31	0.7%	689	748	-59	-7.9%
City South	3409	3,053	356	11.7%	3,052	357	11.7%	567	443	124	28.0%

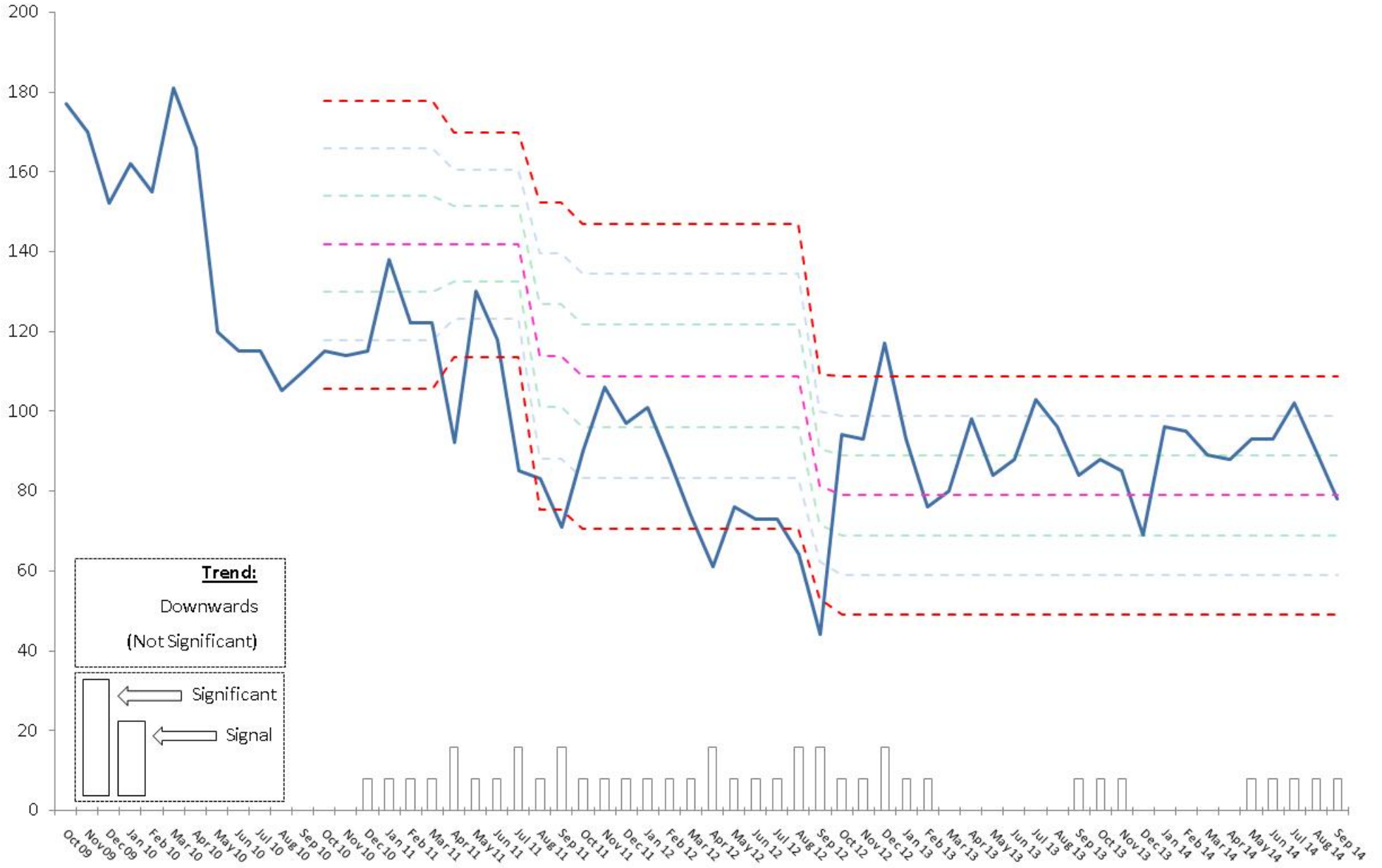
	Year-to-date performance				Target Position			Month-to-date performance			
	2014/15	2013/14	Volume Change	Percentage Change	Current Target	Difference from Target	Percentage Difference from Target	September 2014	September 2013	Volume Change	Percentage Change
All Crime	36390	35,201	1189	3.38%	35,200	1190	3.4%	5959	5576	383	6.9%
Homicide	5	6	-1	-16.7%	5	0	0.0%		2	-2	-100.0%
Violence with injury	4762	4,199	563	13.4%	4,198	564	13.4%	802	631	171	27.1%
Violence without injury	3468	2,705	763	28.2%	2,704	764	28.3%	533	433	100	23.1%
Rape	285	212	73	34.4%	211	74	35.1%	51	22	29	131.8%
Other sexual offences	539	367	172	46.9%	366	173	47.3%	77	72	5	6.9%
Robbery of business property	44	59	-15	-25.4%	58	-14	-24.1%	7	8	-1	-12.5%
Robbery of personal property	500	494	6	1.2%	493	7	1.4%	71	76	-5	-6.6%
Burglary dwelling	1989	2,172	-183	-8.4%	2,171	-182	-8.4%	315	381	-66	-17.3%
Burglary other	2337	2,288	49	2.1%	2,287	50	2.2%	356	430	-74	-17.2%
Theft of motor vehicle	543	732	-189	-25.8%	731	-188	-25.7%	100	119	-19	-16.0%
Theft from motor vehicle	2411	2,489	-78	-3.1%	2,488	-77	-3.1%	451	432	19	4.4%
Vehicle interference	408	154	254	164.9%	153	255	166.7%	78	27	51	188.9%
Theft from person	504	807	-303	-37.5%	806	-302	-37.5%	83	141	-58	-41.1%
Bicycle theft	1224	1,213	11	0.9%	1,212	12	1.0%	260	178	82	46.1%
Shoplifting	3825	3,864	-39	-1.0%	3,863	-38	-1.0%	594	576	18	3.1%
All other theft offences	4452	4,771	-319	-6.7%	4,770	-318	-6.7%	753	710	43	6.1%
Criminal damage	4976	4,986	-10	-0.2%	4,985	-9	-0.2%	794	738	56	7.6%
Arson	233	225	8	3.6%	224	9	4.0%	55	30	25	83.3%
Victim-Based Crime	32505	31,743	762	2.4%	31,742	763	2.4%	5380	5006	374	7.5%
Trafficking in drugs	350	339	11	3.2%	338	12	3.6%	60	52	8	15.4%
Possession of drugs	1444	1,515	-71	-4.7%	1,514	-70	-4.6%	181	246	-65	-26.4%
Possession of weapons offences	289	287	2	0.7%	286	3	1.0%	51	50	1	2.0%
Public order offences	1293	917	376	41.0%	916	377	41.2%	204	161	43	26.7%
Miscellaneous crimes against society	509	400	109	27.3%	399	110	27.6%	83	61	22	36.1%
Other crimes against society	3885	3,458	427	12.3%	3,457	428	12.4%	579	570	9	1.6%

Priority Area	Year-to-Date Performance				Month-to-Date Performance			
	2014/15	2013/14	Volume Difference	Percentage Difference	September 2014	September 2013	Volume Difference	Percentage Difference
Nottingham City								
Arboretum	780	728	52	7%	138	99	39	39%
Aspley	753	830	-77	-9%	120	136	-16	-12%
Bridge	581	439	142	32%	106	65	41	63%
Bulwell	989	973	16	2%	148	160	-12	-8%
St Ann's	674	642	32	5%	105	103	2	2%
Total	3,777	3,612	165	5%	617	563	54	10%
Nottinghamshire County								
Carr Bank	149	168	-19	-11%	29	32	-3	-9%
Oak Tree	174	162	12	7%	17	20	-3	-15%
Portland	585	459	126	27%	100	94	6	6%
Woodlands	466	410	56	14%	74	66	8	12%
Hucknall East	296	323	-27	-8%	42	51	-9	-18%
Kirkby East	317	314	3	1%	59	52	7	13%
Sutton Central	390	378	12	3%	72	59	13	22%
Sutton East	198	210	-12	-6%	21	38	-17	-45%
Sutton In Ashfield North	308	386	-78	-20%	51	56	-5	-9%
Bridge	243	276	-33	-12%	51	47	4	9%
Castle	520	438	82	19%	77	78	-1	-1%
Worksop North West	452	379	73	19%	79	76	3	4%
Worksop South	324	357	-33	-9%	53	58	-5	-9%
Eastwood South	390	391	-1	0%	63	63	0	0%
Netherfield And Colwick	300	286	14	5%	52	53	-1	-2%
Total	5,112	4,937	175	4%	840	843	-3	0%
Discretionary Areas								
Ladybrook	123	154	-31	-20%	25	24	1	4%
Worksop South East	650	588	62	11%	88	117	-29	-25%
Trent Bridge	213	239	-26	-11%	45	34	11	32%
Total	986	981	5	1%	158	175	-17	-10%

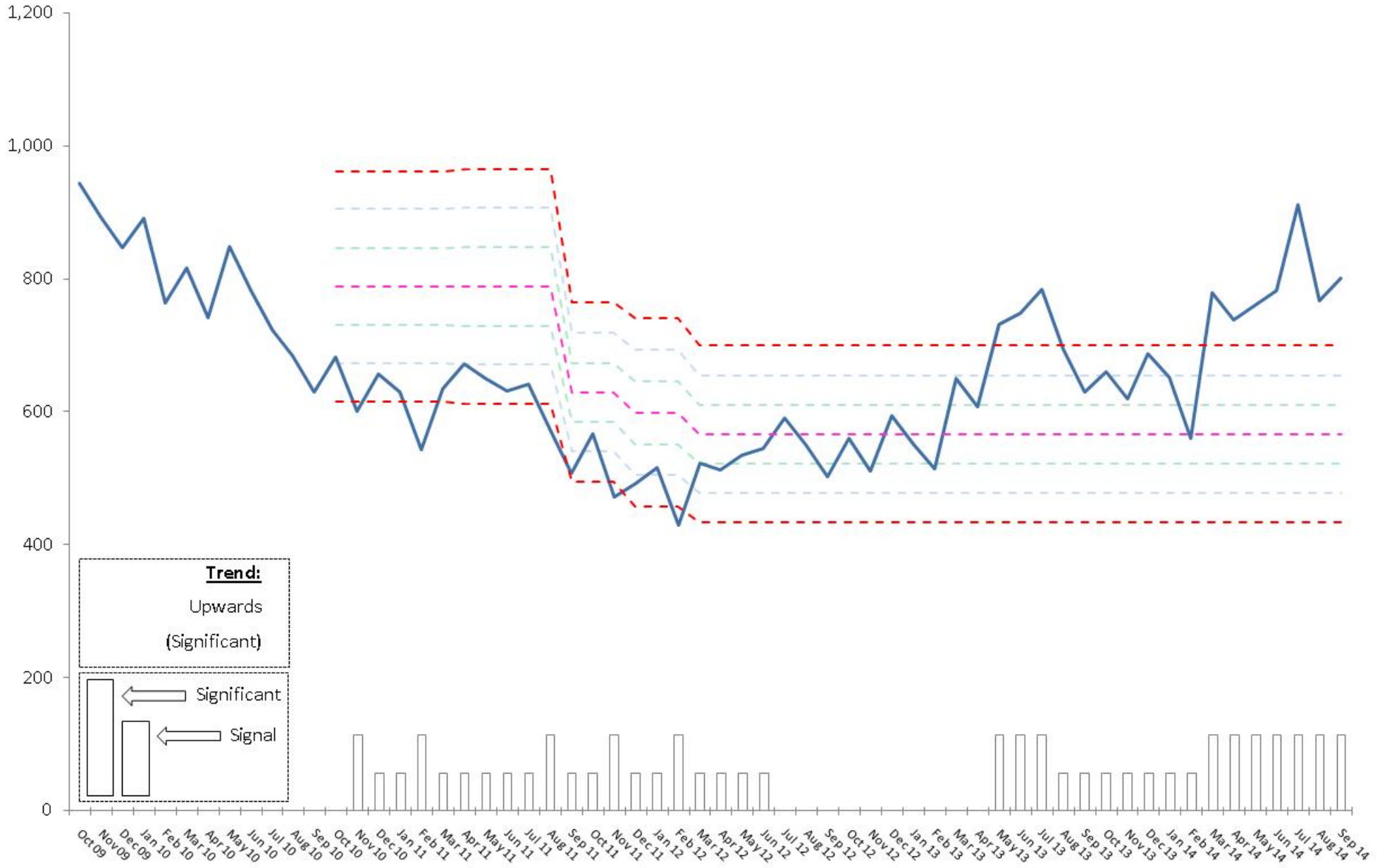
1.6 Burglary Dwelling performance over-time



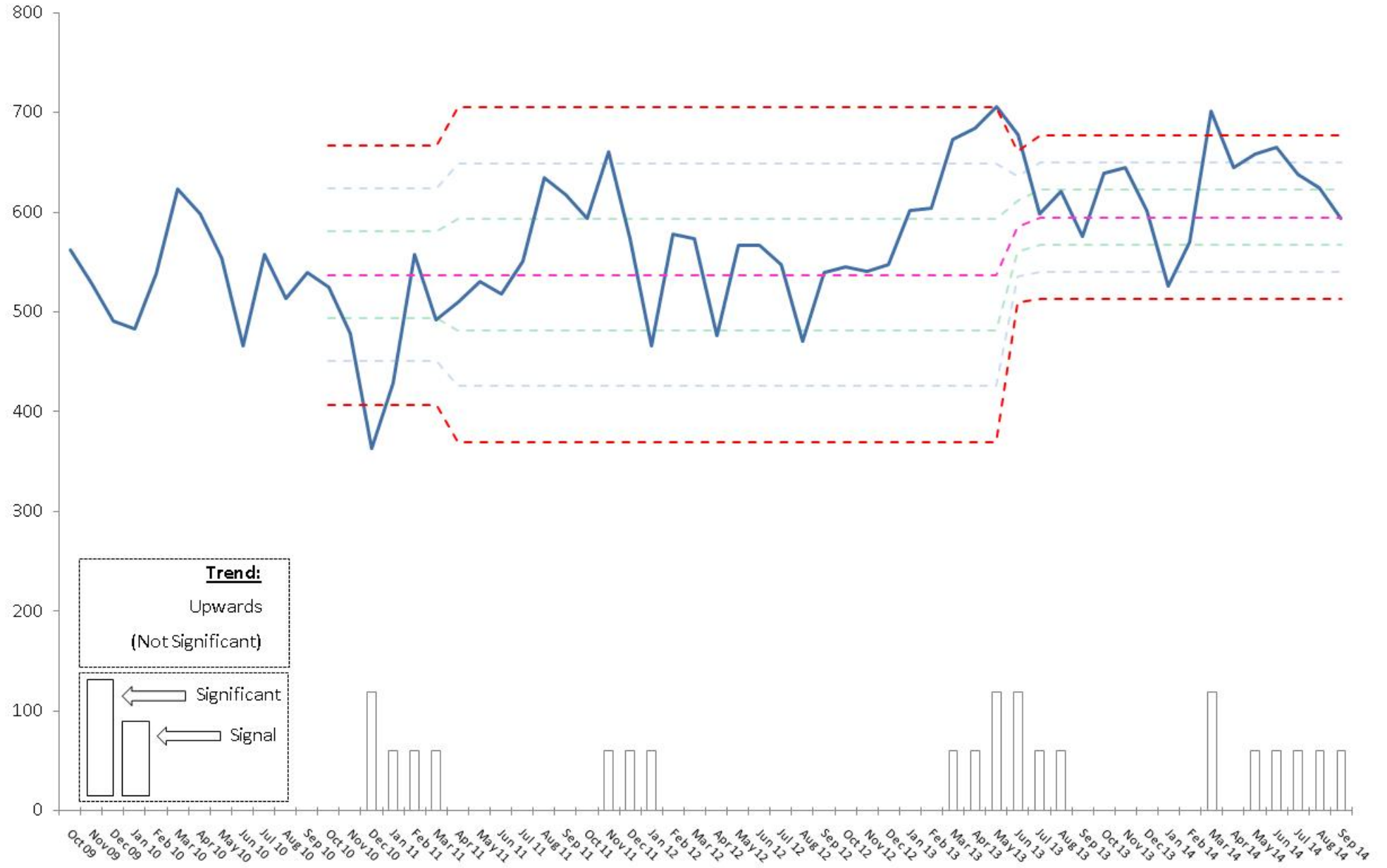
1.6 Robbery performance over-time



1.6 Violence with Injury performance over-time



1.6 Shop Theft performance over-time



1.7 Reduction in Anti-Social Behaviour (ASB) incidents across the Force

	Year-to-date performance				Target Position			Month-to-date performance			
	2014/15	2013/14	Volume Change	Percentage Change	Current Target	Difference from Target	Percentage Difference from Target	September 2014	September 2013	Volume Change	Percentage Change
Force	21,572	19,732	1,840	9.3%	18,153	3418.56	15.8%	3413	3022	391	12.9%
City Division	10,250	8,489	1,761	20.7%	7,810	2440.12	23.8%	1629	1343	286	21.3%
County Division	11,322	11,243	79	0.7%	10,344	978.44	8.6%	1784	1679	105	6.3%
County West	4,260	4,207	53	1.3%	3,870	389.56	9.1%	620	679	-59	-8.7%
Ashfield	2,135	2,097	38	1.8%	1,929	205.76	9.6%	294	337	-43	-12.8%
Mansfield	2,125	2,110	15	0.7%	1,941	183.8	8.6%	326	342	-16	-4.7%
County East	3,483	3,604	-121	-3.4%	3,316	167.32	4.8%	599	498	101	20.3%
Bassetlaw	1,839	1,958	-119	-6.1%	1,801	37.64	2.0%	316	286	30	10.5%
Newark & Sherwood	1,644	1,646	-2	-0.1%	1,514	129.68	7.9%	283	212	71	33.5%
County South	3,579	3,432	147	4.3%	3,157	421.56	11.8%	565	502	63	12.5%
Broxtowe	1,333	1,303	30	2.3%	1,199	134.24	10.1%	184	164	20	12.2%
Gedling	1,363	1,259	104	8.3%	1,158	204.72	15.0%	237	206	31	15.0%
Rushcliffe	883	870	13	1.5%	800	82.6	9.4%	144	132	12	9.1%
City Division	10,250	8,489	1,761	20.7%	7,810	2440.12	23.8%	1629	1343	286	21.3%
City Central	2,816	2,352	464	19.7%	2,164	652.16	23.2%	466	396	70	17.7%
City Centre	1,347	1,079	268	24.8%	993	354.32	26.3%	228	190	38	20.0%
City North	3,387	2,831	556	19.6%	2,605	782.48	23.1%	477	432	45	10.4%
City South	2,700	2,227	473	21.2%	2,049	651.16	24.1%	458	325	133	40.9%

	Year-to-date performance				Target Position			Month-to-date performance			
	2014/15	2013/14	Volume Change	Percentage Change	Current Target	Difference from Target	Percentage Difference from Target	September 2014	September 2013	Volume Change	Percentage Change
ASB Nuisance	16,277	14,371	1,906	13.3%	13,221	3055.68	18.8%	2572	2298	274	11.9%
ASB Personal	3,588	3,638	-50	-1.4%	3,347	241.04	6.7%	580	503	77	15.3%
ASB Environmental	1,707	1,723	-16	-0.9%	1,585	121.84	7.1%	261	221	40	18.1%

1.8 An increase in the detection rate for Victim-Based Crime

	Year-to-date performance			Target Position		Month-to-date performance		
	2014/15	2013/14	Change	Current Target	Percentage Difference from Target	September 2014	September 2013	Change
Force	24.6%	27.5%	-2.8%	27.5%	-2.9%	20.3%	28.0%	-7.8%
City Division	23.6%	27.4%	-3.8%	27.4%	-3.8%	19.4%	27.7%	-8.4%
County Division	25.4%	27.5%	-2.1%	27.5%	-2.1%	20.9%	28.3%	-7.4%
County West	27.6%	28.1%	-0.5%	28.1%	-0.5%	23.1%	28.0%	-4.9%
Ashfield	23.8%	23.4%	0.5%	23.4%	0.4%	17.2%	23.4%	-6.3%
Mansfield	31.2%	33.3%	-2.1%	33.3%	-2.1%	29.2%	33.5%	-4.3%
County East	25.7%	28.5%	-2.7%	28.5%	-2.8%	19.1%	28.7%	-9.6%
Bassetlaw	25.4%	26.6%	-1.2%	26.6%	-1.2%	18.3%	28.4%	-10.1%
Newark & Sherwood	26.2%	31.1%	-4.8%	31.1%	-4.8%	20.2%	29.1%	-8.9%
County South	22.7%	25.9%	-3.2%	25.9%	-3.2%	20.3%	28.1%	-7.8%
Broxtowe	22.8%	22.6%	0.2%	22.7%	0.1%	15.1%	24.8%	-9.7%
Gedling	24.4%	31.3%	-6.9%	31.4%	-6.9%	25.1%	37.9%	-12.8%
Rushcliffe	20.0%	22.9%	-2.9%	22.9%	-2.9%	21.2%	19.9%	1.3%
City Division	23.6%	27.4%	-3.8%	27.4%	-3.8%	19.4%	27.7%	-8.4%
City Central	19.3%	23.4%	-4.1%	23.4%	-4.1%	14.1%	25.0%	-11.0%
City Centre	32.4%	33.7%	-1.3%	33.7%	-1.3%	24.8%	34.2%	-9.4%
City North	22.8%	26.7%	-3.9%	26.7%	-3.9%	22.8%	25.6%	-2.8%
City South	21.6%	26.4%	-4.9%	26.4%	-4.9%	17.2%	26.2%	-8.9%

	Year-to-date performance			Target Position		Month-to-date performance		
	2014/15	2013/14	Percentage Change	Current Target	Percentage Difference from Target	September 2014	September 2013	Change
Homicide	60.0%	83.3%	-23.3%	83.3%	-23.3%		50.0%	-50.0%
Violence with injury	42.4%	49.2%	-6.8%	49.2%	-6.8%	37.0%	49.8%	-12.7%
Violence without injury	39.9%	56.0%	-16.1%	56.0%	-16.1%	33.8%	53.8%	-20.0%
Rape	13.0%	17.0%	-4.0%	17.0%	-4.0%	5.9%	9.1%	-3.2%
Other sexual offences	21.9%	25.3%	-3.4%	25.4%	-3.5%	16.9%	29.2%	-12.3%
Robbery of business property	25.0%	25.4%	-0.4%	25.4%	-0.4%	28.6%	25.0%	3.6%
Robbery of personal property	24.0%	24.1%	-0.1%	24.1%	-0.1%	23.9%	27.6%	-3.7%
Burglary dwelling	11.9%	12.5%	-0.6%	12.5%	-0.6%	17.1%	16.3%	0.9%
Burglary other	7.2%	7.5%	-0.3%	7.5%	-0.3%	7.0%	7.0%	0.0%
Theft of motor vehicle	18.0%	18.4%	-0.4%	18.5%	-0.4%	14.0%	16.0%	-2.0%
Theft from motor vehicle	5.6%	6.3%	-0.7%	6.4%	-0.8%	2.2%	2.8%	-0.6%
Vehicle interference	5.6%	4.5%	1.1%	4.6%	1.1%	3.8%	7.4%	-3.6%
Theft from person	6.5%	4.3%	2.2%	4.3%	2.2%	2.4%	5.0%	-2.6%
Bicycle theft	5.6%	6.4%	-0.8%	6.4%	-0.8%	3.1%	11.2%	-8.2%
Shoplifting	56.0%	59.2%	-3.2%	59.2%	-3.2%	48.3%	65.5%	-17.1%
All other theft offences	9.9%	12.5%	-2.6%	12.5%	-2.6%	6.9%	13.5%	-6.6%
Criminal damage	18.8%	22.1%	-3.3%	22.1%	-3.3%	15.0%	24.4%	-9.4%
Arson	11.6%	12.4%	-0.9%	12.5%	-0.9%	7.3%	16.7%	-9.4%
Victim-Based Crime	24.6%	27.5%	-2.8%	27.5%	-2.9%	20.3%	28.0%	-7.8%

1.8 Use of Community Resolutions

	2014/15	% Prop of total	2013/14	% Prop of total
Cautions	1185	11.1%	2531	21.7%
Charge / Summons	6827	64.1%	5925	50.9%
Community Resolution	1890	17.7%	2075	17.8%
Other	504	4.7%	674	5.8%
Penalty Notice for Crime	105	1.0%	126	1.1%
TIC not previously recorded	7	0.1%	14	0.1%
TIC previously recorded	139	1.3%	294	2.5%
Total	10657	100.0%	11639	100.0%

1.8 Breakdown of Outcome Codes

	Year-to-date performance 2014/15
01. Charged/Summons	6827
02. Caution - Youths	159
03. Caution - Adults	1026
04. Taken Into Consideration	146
05. Offender Has Died	5
06. Penalty Notices For Disorder	105
07. Cannabis Warning	499
08. Community Resolution	1890
09. Prosecution Not In The Public Interest (CPS)	495
10. Action Not In The Public Interest (Police)	909
11. Named Suspect below the age of criminal responsibility	43
12. Named suspect too ill (physical or mental health) to prosecute	76
13. Named suspect but victim/key witness is dead or too ill	19
14. Victim declines/unable to ID suspect	527
15. Victim supports but evidential difficulties prevent further action	2391
16. Victim does not support/withdraws support	2452
17. Prosecution time limit expired	32
18. Investigation Complete: No suspect identified	17890
Total	35491

1.9 The number of alcohol-related crimes

	Year-to-date performance				Month-to-date performance			
	2014/15	2013/14	Volume Change	Percentage Change	September 2014	September 2013	Volume Change	Percentage Change
All Crime	36,390	35,201	1,189	3.4%	5,959	5,576	383	6.9%
Alcohol-related	4,814	4,857	-43	-0.9%	710	748	-38	-5.1%
% Alcohol-related	13.2%	13.8%		-0.6%	11.9%	13.4%		-1.5%
Victim-Based Crime	32,505	31,743	762	2.4%	5,380	5,006	374	7.5%
Alcohol-related	4,258	4,300	-42	-1.0%	626	654	-28	-4.3%
% Alcohol-related	13.1%	13.5%		-0.4%	11.6%	13.1%		-1.5%
Violence Against the Person	8,235	6,910	1,325	19.2%	1,335	1,066	269	25.2%
Alcohol-related	1,927	1,766	161	9.1%	294	265	29	10.9%
% Alcohol-related	23.4%	25.6%		-2.2%	22.0%	24.9%		-2.9%
Anti-Social Behaviour	21,572	19,732	1,840	9.3%	3,413	3,022	391	12.9%
Alcohol-related	2,938	2,611	327	12.5%	467	420	47	11.2%
% Alcohol-related	13.6%	13.2%		0.4%	13.7%	13.9%		-0.2%

1.11 To monitor the number of production and supply of drugs

	Year-to-date performance				Taret Position			Month-to-date performance			
	2014/15	2013/14	Volume Change	Percentage Change	Current Target	Difference from Target	Percentage Difference from Target	September 2014	September 2013	Volume Change	Percentage Change
Possession	1444	1,515	-71	-4.7%	1,514	-70	-4.6%	181	246	-65	-26.4%
Production	189	217	-28	-12.9%	216	-27	-12.5%	40	34	6	17.6%
Supply	161	122	39	32.0%	121	40	33.1%	20	18	2	11.1%
Sum:	1794	1,854	-60	-3.2%	1,851	-57	-3.2%	241	298	-57	-19.1%

3.4 Percentage reduction of people that have been a repeat victim within the previous 12 months

Domestic Violence		Year-to-date performance		
Repeat Victims	2014/15	2013/14	Volume Change	Percentage Change
City	420	422	-2	-0.5%
County	591	586	5	0.9%
Force	1011	1008	3	0.3%

Hate Crime

Year-to-date performance

Repeat Victims	2014/15	2013/14	Volume Change	Percentage Change
City	26	20	6	30.0%
County	19	19	0	0.0%
Force	45	39	6	15.4%

Total Repeat Volume

Year-to-date performance

	2014/15	2013/14	Volume Change	Percentage Change
City	446	442	4	0.9%
County	610	605	5	0.8%
Force	1056	1047	9	0.9%

Domestic Violence

Year-to-date performance

	2014/15	2013/14	Volume Change	Percentage Change
City Central	109	100	9	9.0%
City Centre	9	6	3	50.0%
City North	190	192	-2	-1.0%
City South	112	124	-12	-9.7%

Domestic Violence

Year-to-date performance

	2014/15	2013/14	Volume Change	Percentage Change
Ashfield	105	118	-13	-11.0%
Bassetlaw	93	78	15	19.2%
Broxtowe	71	63	8	12.7%
Gedling	95	92	3	3.3%
Mansfield	123	119	4	3.4%

2013/14				
Domestic Violence Crimes	Domestic Violence crimes which are repeats	% Proportion of Domestic Violence crimes which are repeats	Domestic Violence Crimes	Domestic Violence crimes which are repeats
City	1,276	485	38.0%	1,244
County	1,674	658	39.3%	1,920
Force	2,950	1,143	38.7%	3,164

* Includes domestic abuse incidents to determine repeat victimisation

2013/14				
Domestic Violence Crimes	Domestic Violence crimes which are repeats	% Proportion of Domestic Violence crimes which are repeats	Domestic Violence Crimes	Domestic Violence crimes which are repeats
City	1,276	238	18.7%	1,244
County	1,674	311	18.6%	1,920
Force	2,950	549	18.6%	3,164

* Only includes notifiable domestic abuse offences to determine repeat victimisation

Anti-Social Behaviour

Year-to-date performance

	2014/15	2013/14	Volume Change	Percentage Change
City	2,072	1,686	386	22.9%
County	2,107	2,090	17	0.8%
Force	4,179	3,776	403	10.7%

Anti-Social Behaviour

Year-to-date performance

	2014/15	2013/14	Volume Change	Percentage Change
City	2,072	1,686	386	22.9%
City Central	569	485	84	17.3%
City Centre	275	189	86	45.5%
City North	680	562	118	21.0%
City South	548	450	98	21.8%
County	2,106	2,089	17	0.8%
Ashfield	425	419	6	1.4%
Bassetlaw	336	339	-3	-0.9%
Broxtowe	235	247	-12	-4.9%
Gedling	216	206	10	4.9%
Mansfield	438	437	1	0.2%
Newark & She	291	301	-10	-3.3%

3.5 Public confidence in reporting offences to the police

To monitor the number of Serious Sexual Offences

Area	Offence Type	Year-to-Date Performance				Month-to-Date Performance			
		2014/15	2013/14	Volume Difference	Percentage Difference	September 2014	September 2013	Volume Difference	Percentage Difference
Force	Rape	285	212	73	34%	51	22	29	132%
	Other Sexual Offences	367	252	115	46%	56	52	4	8%
	Serious Sexual Offences Total	652	464	188	41%	107	74	33	45%
<hr/>									
Area	Offence Type	Year-to-Date Performance				Month-to-Date Performance			
		2014/15	2013/14	Volume Difference	Percentage Difference	September 2014	September 2013	Volume Difference	Percentage Difference
Nottingham City	Rape	131	90	41	46%	27	10	17	170%
	Other Sexual Offences	161	110	51	46%	27	22	5	23%
	Serious Sexual Offences Total	292	200	92	46%	54	32	22	69%
Nottinghamshire County	Rape	154	122	32	26%	24	12	12	100%
	Other Sexual Offences	206	142	64	45%	29	30	-1	-3%
	Serious Sexual Offences Total	360	264	96	36%	53	42	11	26%
<hr/>									
Area	Offence Type	Year-to-Date Performance				Month-to-Date Performance			
		2014/15	2013/14	Volume Difference	Percentage Difference	September 2014	September 2013	Volume Difference	Percentage Difference
Ashfield	Rape	27	18	9	50%	5	1	4	400%
	Other Sexual Offences	32	27	5	19%	5	1	4	400%
	Serious Sexual Offences Total	59	45	14	31%	10	2	8	400%
Bassetlaw	Rape	27	16	11	69%	5	2	3	150%
	Other Sexual Offences	33	20	13	65%	5	5	0	0%
	Serious Sexual Offences Total	60	36	24	67%	10	7	3	43%
Broxtowe	Rape	20	20	0	0%	6	1	5	500%
	Other Sexual Offences	24	16	8	50%	5	6	-1	-17%
	Serious Sexual Offences Total	44	36	8	22%	11	7	4	57%
City	Rape	131	90	41	46%	27	10	17	170%
	Other Sexual Offences	161	110	51	46%	27	22	5	23%
	Serious Sexual Offences Total	292	200	92	46%	54	32	22	69%
Gedling	Rape	21	8	13	163%	1	0	1	#DIV/0
	Other Sexual Offences	31	13	18	138%	2	2	0	0%
	Serious Sexual Offences Total	52	21	31	148%	3	2	1	50%
Mansfield	Rape	35	31	4	13%	7	4	3	75%
	Other Sexual Offences	42	29	13	45%	2	5	-3	-60%
	Serious Sexual Offences Total	77	60	17	28%	9	9	0	0%
Newark & Sherwood	Rape	15	20	-5	-25%	0	2	-2	-100%
	Other Sexual Offences	29	31	-2	-6%	9	7	2	29%
	Serious Sexual Offences Total	44	51	-7	-14%	9	9	0	0%
Rushcliffe	Rape	9	9	0	0%	0	2	-2	-100%
	Other Sexual Offences	15	6	9	150%	1	4	-3	-75%
	Serious Sexual Offences Total	24	15	9	60%	1	6	-5	-83%

To monitor the number of Domestic Violence incidents and crimes

Area	Offence Type	Year-to-Date Performance				Month-to-Date Performance			
		2014/15	2013/14	Volume Difference	Percentage Difference	September 2014	September 2013	Volume Difference	Percentage Difference
Force	Domestic Crimes	3169	2948	221	7%	507	473	34	7%
	Domestic Incidents	6394	8526	-2132	-25%	1248	1244	4	0%
	Domestic Abuse Total	9563	11474	-1911	-17%	1755	1717	38	2%

Area	Offence Type	Year-to-Date Performance				Month-to-Date Performance			
		2014/15	2013/14	Volume Difference	Percentage Difference	September 2014	September 2013	Volume Difference	Percentage Difference
Nottingham City	Domestic Crimes	1273	1304	-31	-2%	198	188	10	5%
	Domestic Incidents	2666	3447	-781	-23%	523	547	-24	-4%
	Domestic Abuse Total	3939	4751	-812	-17%	721	735	-14	-2%
Nottinghamshire County	Domestic Crimes	1896	1644	252	15%	309	285	24	8%
	Domestic Incidents	3728	5079	-1351	-27%	725	697	28	4%
	Domestic Abuse Total	5624	6723	-1099	-16%	1034	982	52	5%

Area	Offence Type	Year-to-Date Performance				Month-to-Date Performance			
		2014/15	2013/14	Volume Difference	Percentage Difference	September 2014	September 2013	Volume Difference	Percentage Difference
Ashfield	Domestic Crimes	311	302	9	3%	63	53	10	19%
	Domestic Incidents	740	1058	-318	-30%	145	135	10	7%
	Domestic Abuse Total	1051	1360	-309	-23%	208	188	20	11%
Bas setlaw	Domestic Crimes	302	228	74	32%	52	29	23	79%
	Domestic Incidents	608	814	-206	-25%	138	123	15	12%
	Domestic Abuse Total	910	1042	-132	-13%	190	152	38	25%
Broxtowe	Domestic Crimes	221	184	37	20%	41	32	9	28%
	Domestic Incidents	429	573	-144	-25%	92	80	12	15%
	Domestic Abuse Total	650	757	-107	-14%	133	112	21	19%
City	Domestic Crimes	1273	1304	-31	-2%	198	188	10	5%
	Domestic Incidents	2666	3447	-781	-23%	523	547	-24	-4%
	Domestic Abuse Total	3939	4751	-812	-17%	721	735	-14	-2%
Gedling	Domestic Crimes	271	249	22	9%	44	39	5	13%
	Domestic Incidents	486	692	-206	-30%	79	91	-12	-13%
	Domestic Abuse Total	757	941	-184	-20%	123	130	-7	-5%
Mansfield	Domestic Crimes	416	329	87	26%	57	64	-7	-11%
	Domestic Incidents	710	974	-264	-27%	130	123	7	6%
	Domestic Abuse Total	1126	1303	-177	-14%	187	187	0	0%
Newark & Sherwood	Domestic Crimes	265	237	28	12%	35	53	-18	-34%
	Domestic Incidents	511	651	-140	-22%	85	101	-16	-16%
	Domestic Abuse Total	776	888	-112	-13%	120	154	-34	-22%
Rushcliffe	Domestic Crimes	110	115	-5	-4%	17	15	2	13%
	Domestic Incidents	244	317	-73	-23%	56	44	12	27%
	Domestic Abuse Total	354	432	-78	-18%	73	59	14	24%

To monitor the number of Hate Crimes

Area	Offence Type	Year-to-Date Performance				Month-to-Date Performance			
		2014/15	2013/14	Volume Difference	Percentage Difference	September 2014	September 2013	Volume Difference	Percentage Difference
Force	Victim-Based Offences	209	199	10	5%	32	28	4	14%
	Public Order Offences	258	210	48	23%	44	37	7	19%
	Hate Crime Total	467	409	58	14%	76	65	11	17%

Area	Offence Type	Year-to-Date Performance				Month-to-Date Performance			
		2014/15	2013/14	Volume Difference	Percentage Difference	September 2014	September 2013	Volume Difference	Percentage Difference
Nottingham City	Victim-Based Offences	101	90	11	12%	11	9	2	22%
	Public Order Offences	129	129	0	0%	27	21	6	29%
	Hate Crime Total	230	219	11	5%	38	30	8	27%
Nottinghamshire County	Victim-Based Offences	108	109	-1	-1%	21	19	2	11%
	Public Order Offences	129	81	48	59%	17	16	1	6%
	Hate Crime Total	237	190	47	25%	38	35	3	9%

Area	Offence Type	Year-to-Date Performance				Month-to-Date Performance			
		2014/15	2013/14	Volume Difference	Percentage Difference	September 2014	September 2013	Volume Difference	Percentage Difference
Ashfield	Victim-Based Offences	18	17	1	6%	4	5	-1	-20%
	Public Order Offences	23	22	1	5%	5	4	1	25%
	Hate Crime Total	41	39	2	5%	9	9	0	0%
Bas setlaw	Victim-Based Offences	21	6	15	250%	5	2	3	150%
	Public Order Offences	24	9	15	167%	2	3	-1	-33%
	Hate Crime Total	45	15	30	200%	7	5	2	40%
Broxtowe	Victim-Based Offences	6	22	-16	-73%	1	3	-2	-67%
	Public Order Offences	11	8	3	38%	4	1	3	300%
	Hate Crime Total	17	30	-13	-43%	5	4	1	25%
City	Victim-Based Offences	101	90	11	12%	11	9	2	22%
	Public Order Offences	129	129	0	0%	27	21	6	29%
	Hate Crime Total	230	219	11	5%	38	30	8	27%
Gedling	Victim-Based Offences	15	18	-3	-17%	1	1	0	0%
	Public Order Offences	19	11	8	73%	2	2	0	0%
	Hate Crime Total	34	29	5	17%	3	3	0	0%
Mansfield	Victim-Based Offences	20	26	-6	-23%	5	6	-1	-17%
	Public Order Offences	22	24	-2	-8%	4	5	-1	-20%
	Hate Crime Total	42	50	-8	-16%	9	11	-2	-18%
Newark & Sherwood	Victim-Based Offences	21	16	5	31%	5	2	3	150%
	Public Order Offences	21	6	15	250%	0	1	-1	-100%
	Hate Crime Total	42	22	20	91%	5	3	2	67%
Rushcliffe	Victim-Based Offences	7	4	3	75%	0	0	0	#DIV/0
	Public Order Offences	9	1	8	800%	0	0	0	#DIV/0
	Hate Crime Total	16	5	11	220%	0	0	0	#DIV/0